

September 2024 performance review and sector update

Conviction ideas: Our preferences within each sector are based on numerous quantitative and qualitative factors. Table 1 on page 2 provides a sector update, with our estimated current net tangible assets (NTAs) derived from our model portfolios.

Traditional LICs

The ASX 200 Accum. Index rallied higher during September, advancing 3.0% to mark its fifth consecutive positive month. Traditional LICs were unable to keep pace with the broader market, returning an average of 2.0% on a Total Shareholder Return (TSR) basis, and an average of 1.6% on a pre-tax net tangible asset (NTA) basis.

Preferred LIC **Australian United Investment Company (AUI)** trailed the benchmark, returning just 1.6% on an NTA basis during September, but remains our pick for those seeking a Traditional LIC trading at a discount. The fund currently trades at an estimated 9.9% discount, between its 1- and 3-year average discounts of 11.4% and 8.0%.

Our second preference, **BKI Investment Company (BKI)**, was the only Traditional LIC to outperform on an NTA basis during September with a gain of 3.2%. The share price lagged, with BKI's discount widening to an estimated 9.7%, and is well below its longer-term averages. The trailing gross yield sits at 6.5%.

Large Capitalisation

L1 Long Short Fund (LSF) maintains its position as our preferred large cap LIC after a strong September in which it returned 4.5% on an NTA basis, driven by broad-based gains throughout the portfolio. Longer-term performance remains excellent, outpacing peers in our large cap universe.

AMCIL (AMH), our second preference, underperformed the market during the month. However, we still view AMH as attractive given its longer-term performance and its current discount to NTA. It is trading at an estimated 12.5% discount, broadly in line with its 1-year average, and meaningfully below its 3- and 5-year average discounts of 5.7% and 6.0%.

Small Capitalisation & Specialist

Small caps had their best month of 2024, with the Small Ords Accum. Index adding 5.1%. Key pick, **Spheria Emerging Companies (SEC)**, was unable to match the return of its benchmark, adding just 2.8% on an NTA basis. SEC is currently trading at a 6% discount and offers a trailing gross yield of 7.5%.

Our specialist preference remains **Regal Investment Fund (RF1)** given the stellar NTA performance over 1-, 3- and 5-year periods. The vehicle provides

Contents

Around The Grounds: LIC News	2
Sector Snapshot	3
Performance Table (September-24)	5
Top Picks (by Segment)	
Australian United Investment Co. (AUI)	6
BKI Investment Company (BKI)	7
L1 Long Short Fund (LSF)	8
AMCIL (AMH)	9
Spheria Emerging Companies (SEC)	10
Regal Investment Fund (RF1)	11
PM Capital Global Opportunities (PGF)	12
Appendix	
Historical Prem/Disc for Pref. LICs	13
Net tangible asset (NTA) growth	15
Total shareholder return (TSR) growth	16
Dividend yield, pre & post tax-NTA	17
Return volatility	18
LIC basics	20

Hugh Glasson

Research Associate
(02) 8216 6513
hglasson@ords.com.au

Disclosure: Ord Minnett acted as Joint Lead Manager in a capital raising PM Capital Global Opportunities Fund Limited (PGF) in July 2024 and received fees for acting in these capacities. Ord Minnett may do business with and receive commission and/or fees from companies that are the subject of this report. Hugh Glasson holds units in LSF and BTI.

exposure to various strategies managed by the award-winning Regal Funds Management since being established in 2004.

International

Overseas markets, as measured by the MSCI World Index on a total return AUD adjusted basis, dipped 0.8% in September, although on a year-to-date basis remains at a healthy 17.5% gain.

Preferred international LIC **PM Capital Global Opportunities Fund** (PGF) resumed its winning ways in September. NTA performance was 2.2%, while on a TSR basis, the fund returned 4.3% which included a fully franked 5.5c final dividend. The fund's active performance over the key 3- and 5-year horizons is excellent and well ahead of peers. In our view, the impressive track record justifies the approximate 2% premium to NTA.

Around The Grounds: LIC News

Spheria Emerging Companies (SEC)

- On 30 September Spheria provided an update on the conditional proposal it released in January 2024 to address the persistence of the discount of the share price compared to its NTA. Under the proposal, the average of the daily NTA discount, as measured by the daily closing share price relative to the pre-tax NTA on that same day, will be calculated over the current quarter (1 October 2024 to 31 December 2024). If this average is at a greater than 5% discount, SEC intends to pursue avenues available to enable SEC shareholders to exchange their shares for units in the unlisted Spheria Australian Smaller Companies Fund. If the average discount is less than 5%, SEC will remain as a LIC.

Platinum Capital (PMC)

- Following a review into the persistent price discount to NTA, Platinum Capital has announced it has agreed to pursue a scheme of arrangement with the Platinum International Fund (ASX: PIXX). If implemented, the scheme will enable shareholders to continue to access the same global investment strategy via an ASX listed vehicle, managed by Platinum, with the same benchmark and objective as the current LIC. PMC shareholders will receive PIXX units with an aggregate value equal to the post-tax NTA (adjusted for transaction costs) value of their shares. Pending shareholder and Court approvals, the scheme is expected to take effect by late February – mid March 2025.

MFF Capital Investments (MFF)

- At its recent AGM, MFF announced the intended acquisition of Montaka Global Investments, a global fund manager with offices in New York and Sydney with approximately \$260 million of funds under management across three main funds (including two ASX listed ETF's: MOGL and MKAX). MFF intends to acquire the Montaka Global businesses, on an effective debt free basis, for nominal consideration, from vendors Chris Mackay (MFF Managing Director/Portfolio Manager) and Montaka staff. The acquisition is scheduled to complete in early 2025, subject to final binding agreements and customary preconditions. Upon completion, Montaka's funds will operate independently of MFF, and will continue to be managed by its existing portfolio manager.

Table 1: Sector snapshot

Listed Investment Companies coverage by sector

Listed Investment Companies coverage by sector																
Traditional LICs																
	Code	Share Price	Market Cap. (\$m)	Trailing Dividend (cents)	Trailing Dividend Yield	Trailing Grossed Up Yield	TSR since 1 Oct 24	Current Est. NTA	Current Estimated Disc/Prem	Sep NTA	Sep Disc/Prem	1 Yr Ave Disc/Prem	3 Yr Ave Disc/Prem	Sep Post-tax Disc/Prem	MER	
Australian Foundat.	AFI	7.46	9382.6	26.0	3.5%	5.0%	0.1%	8.33	-10.4%	8.33	-10.6%	-6.2%	2.7%	7.8%	0.16%	
Argo Investments	ARG	8.89	6792.8	34.5	3.9%	5.5%	-0.7%	10.08	-11.8%	10.08	-11.2%	-7.1%	-0.9%	3.2%	0.16%	
Australian United Invest.	AUI	11.06	1372.5	45.0	4.1%	5.8%	0.5%	12.28	-9.9%	12.28	-10.3%	-11.4%	-8.0%	8.9%	0.10%	
BKI Investment Ltd	BKI	1.73	1396.3	7.9	4.5%	6.5%	-1.4%	1.90*	-9.7%	1.91	-8.1%	-5.3%	-3.0%	0.0%	0.18%	
Djerriwarrh	DJW	3.22	849.2	15.3	4.7%	6.8%	1.3%	3.45	-6.8%	3.47	-8.4%	-10.0%	-7.5%	-5.6%	0.45%	
Diversified United	DUI	5.25	1134.8	16.0	3.0%	4.4%	-0.8%	6.09	-13.9%	6.03	-12.3%	-12.3%	-8.6%	6.7%	0.12%	
Large Capitalisation																
	Code	Share Price	Market Cap. (\$m)	Trailing Dividend (cents)	Trailing Dividend Yield	Trailing Grossed Up Yield	TSR since 1 Oct 24	Current Est. NTA	Current Estimated Disc/Prem	Sep NTA	Sep Disc/Prem	1 Yr Ave Disc/Prem	3 Yr Ave Disc/Prem	Sep Post-tax Disc/Prem	MER	
AMCIL Limited	AMH	1.16	368.9	4.0	3.4%	4.9%	1.3%	1.33	-12.5%	1.32	-13.3%	-12.4%	-5.7%	-1.7%	0.56%	
Clime Capital	CAM	0.80	120.7	5.4	6.8%	9.6%	-0.2%	0.80*	0.0%	0.83	-1.8%	-0.9%	-1.0%	-1.2%	1.00%	
Cadence Capital	CDM	0.72	212.9	9.0	12.6%	18.0%	0.0%	n.a	0.0%	0.83	-9.8%	-12.8%	-9.5%	-25.7%	1.00%	
Carlton Investments	CIN	30.29	800.8	104.0	3.4%	4.9%	1.6%	40.24	-24.7%	40.20	-25.9%	-24.4%	-22.9%	-11.4%	0.10%	
Future Gen Ltd	FGX	1.27	516.3	6.9	5.4%	7.7%	2.4%	n.a	n.a	1.42	-10.6%	-13.4%	-10.6%	-7.9%	0.00%	
L1 Long Short Fnd Ltd	LSF	3.15	1970.3	11.8	3.7%	5.3%	0.6%	3.24*	-5.6%	3.17	-1.3%	-4.1%	-5.8%	2.0%	1.44%	
Mirrabooka Invest.	MIR	3.41	662.4	13.0	3.8%	5.4%	0.3%	3.39	0.7%	3.37	0.9%	1.5%	4.1%	15.3%	0.50%	
Perpetual Equity Ltd	PIC	1.20	458.2	8.0	6.7%	9.5%	0.0%	1.31*	-7.7%	1.27	-5.7%	-8.1%	-5.5%	-8.0%	1.00%	
Plato Income Max.	PL8	1.25	932.1	6.6	5.3%	7.6%	0.4%	1.12*	10.7%	1.14	9.2%	11.1%	13.4%	9.3%	0.80%	
WAM Leaders Limited	WLE	1.38	1885.6	9.1	6.6%	9.4%	-1.1%	n.a	n.a	1.41	-0.9%	-0.3%	3.2%	na	1.00%	
Whitefield Ltd	WHF	5.66	664.5	20.5	3.6%	5.2%	2.0%	6.28	-9.9%	6.23	-10.9%	-7.1%	-2.2%	0.5%	0.25%	
Small Capitalisation																
	Code	Share Price	Market Cap. (\$m)	Trailing Dividend (cents)	Trailing Dividend Yield	Trailing Grossed Up Yield	TSR since 1 Oct 24	Current Est. NTA	Current Estimated Disc/Prem	Sep NTA	Sep Disc/Prem	1 Yr Ave Disc/Prem	3 Yr Ave Disc/Prem	Sep Post-tax Disc/Prem	MER	
Acorn Cap Inv Fund	ACQ	0.86	76.1	7.0	8.2%	11.7%	3.0%	n.a	n.a	1.10	-24.6%	-15.4%	-8.3%	-24.8%	0.95%	
ECP Emerging Growth	ECP	1.49	27.4	5.4	3.6%	5.2%	6.4%	1.88	-20.8%	1.86	-24.9%	-24.3%	-20.3%	-20.2%	1.00%	
Naos Small Cap Opp	NSC	0.48	64.1	5.0	10.5%	15.0%	2.2%	n.a	n.a	0.57	-18.4%	-14.6%	-16.3%	-23.0%	1.15%	
Glennon SML Co Ltd	GC1	0.50	23.8	3.0	6.1%	6.9%	4.2%	n.a	n.a	0.75	-36.7%	-30.7%	-24.0%	-34.2%	1.00%	
Naos Emerg Opp	NCC	0.44	32.1	5.8	13.2%	17.0%	18.4%	n.a	n.a	0.52	-26.0%	-9.9%	-11.8%	-31.6%	1.25%	
NGE Capital	NGE	1.13	40.2	0.0	0.0%	0.0%	0.4%	n.a	n.a	1.31	-14.1%	-17.4%	-19.7%	-19.5%	1.90%	
Ophir High Conviction	OPH	2.85	634.4	7.5	2.6%	2.6%	4.8%	3.14*	-11.9%	3.07	-11.4%	-11.9%	-4.8%	na	1.23%	
Ryder Capital	RYD	1.27	103.7	9.0	7.1%	10.2%	2.0%	n.a	n.a	1.51	-17.8%	-16.0%	-13.5%	-16.0%	1.25%	
Salter Brothers Emerging	SB2	0.71	62.9	0.0	0.0%	0.0%	-2.7%	n.a	n.a	1.06	-31.0%	-36.2%	-31.7%	-31.1%	1.25%	
Spheria Emerging Co	SEC	2.30	137.5	12.0	5.2%	7.5%	0.9%	2.44*	-6.0%	2.41	-5.3%	-6.9%	-9.4%	-3.1%	1.00%	
WAM Capital Limited	WAM	1.61	1792.5	15.5	9.6%	12.9%	-0.6%	n.a	n.a	1.71	-5.1%	-6.6%	3.5%	na	1.00%	
WAM Research Ltd	WAX	1.13	229.6	10.0	8.9%	11.2%	-2.0%	n.a	n.a	1.13	6.2%	5.7%	21.0%	na	1.00%	
WAM Microcap Ltd	WMI	1.49	412.5	10.5	7.0%	10.1%	0.1%	n.a	n.a	1.44	7.0%	8.4%	13.7%	na	1.00%	

Source: Company releases, Bloomberg, IRESS, OML estimates

Figures as at: 16 October 2024

*NTA is last reported NTA, adjusted for any dividends past ex-date. Current premium and discount is based on the discount at date of last disclosed NTA date.



Table 1: Sector snapshot (cont.)

Listed Investment Companies coverage by sector

Listed Investment Companies coverage by sector															
International															
	Code	Share Price	Market Cap. (\$m)	Trailing Dividend (cents)	Trailing Dividend Yield	Trailing Grossed Up Yield	TSR since 1 Oct 24	Current Est. NTA	Current Estimated Disc/Prem	Sep NTA	Sep Disc/Prem	1 Yr Ave Disc/Prem	3 Yr Ave Disc/Prem	Sep Post-tax Disc/Prem	MER
Argo Global Ltd	ALI	2.32	412.4	0.0	0.0%	0.0%	-1.3%	2.58*	-10.5%	2.56	-8.2%	-12.5%	-6.3%	-5.6%	1.25%
Future Glb Invest Co	FGG	1.39	553.4	3.6	2.6%	3.7%	2.2%	n.a	n.a	1.55	-12.3%	-16.3%	-13.0%	-8.1%	0.00%
Global Value Fnd Ltd	GVF	1.27	221.2	7.6	6.0%	8.6%	4.5%	n.a	n.a	1.31	-8.0%	-7.2%	-5.4%	0.0%	1.50%
Pengana International	PIA	1.16	298.3	5.4	4.7%	6.7%	3.6%	1.33*	-14.9%	1.30	-13.5%	-15.8%	-13.8%	-12.9%	1.23%
MFF Capital Invest.	MFF	3.93	2277.4	13.0	3.3%	4.7%	4.2%	4.48*	-13.8%	4.38	-12.4%	-14.6%	-15.9%	5.1%	0.55%
Platinum Asia Ltd	PAI	1.05	386.7	2.5	2.4%	3.4%	1.0%	1.13*	-6.6%	1.12	-7.5%	-11.4%	-12.5%	-5.1%	1.10%
PM Capital Fund	PGF	2.34	1120.7	10.5	4.5%	6.4%	2.6%	2.22*	2.3%	2.16	5.4%	2.4%	-0.1%	19.1%	1.00%
Platinum Capital Ltd	PMC	1.44	424.8	6.0	4.2%	6.0%	0.7%	1.55*	-6.3%	1.52	-6.4%	-11.5%	-13.0%	-4.5%	1.10%
Regal Asian Investments	RG8	2.19	349.6	10.0	4.6%	6.5%	2.3%	2.62*	-18.7%	2.50	-14.4%	-13.6%	-15.0%	0.0%	1.50%
WAM Global	WGB	2.28	810.0	6.0	2.6%	3.8%	-0.4%	n.a	n.a	2.49	-8.0%	-10.5%	-11.7%	na	1.25%
VGI Partners Global	VG1	2.01	546.7	10.0	5.0%	7.1%	-1.5%	2.24*	-11.6%	2.19	-6.8%	-12.6%	-15.2%	na	1.50%
Specialist															
	Code	Share Price	Market Cap. (\$m)	Trailing Dividend (cents)	Trailing Dividend Yield	Trailing Grossed Up Yield	TSR since 1 Oct 24	Current Est. NTA	Current Estimated Disc/Prem	Sep NTA	Sep Disc/Prem	1 Yr Ave Disc/Prem	3 Yr Ave Disc/Prem	Sep Post-tax Disc/Prem	MER
Bailador Tech Inv	BTI	1.24	182.2	6.9	5.6%	8.0%	-2.8%	n.a	n.a	1.79	-29.1%	-29.9%	-26.7%	-22.1%	1.75%
Hearts and Minds	HM1	2.91	666.3	14.5	5.0%	7.1%	2.5%	3.36*	-12.2%	3.28	-13.4%	-16.6%	-14.6%	-10.1%	0.00%
Lowell Resource Fund	LRT	1.30	44.8	15.2	11.7%	11.8%	3.2%	1.42*	-8.0%	1.44	-12.7%	-11.3%	-12.3%	na	2.16%
Lion Selection Grp	LSX	0.54	75.5	1.5	2.8%	2.8%	4.9%	n.a	n.a	0.72	-28.8%	-30.1%	-29.2%	-27.6%	1.50%
NAOS ex-50 Opport.	NAC	0.49	21.0	6.0	12.2%	17.5%	-1.0%	n.a	n.a	0.48	3.1%	1.1%	-8.5%	-16.7%	1.75%
Regal Investment Fund	RF1	3.50	652.5	22.1	6.3%	6.3%	1.4%	3.51*	-3.1%	3.45	0.0%	-5.6%	-2.2%	na	1.50%
Sandon Capital Ltd	SNC	0.85	120.5	5.5	6.5%	9.3%	5.0%	n.a	n.a	0.93	-13.4%	-14.0%	-13.7%	-10.2%	1.25%
Tribeca Glb Resources	TGF	1.65	130.0	0.0	0.0%	0.0%	-2.9%	2.04*	-0.21	2.01	-15.6%	-19.6%	-17.4%	-18.8%	1.50%
Thorney Technologies Ltd	TEK	0.15	56.1	0.0	0.0%	0.0%	7.4%	n.a	n.a	0.25	-46.9%	-40.3%	-33.1%	-50.9%	1.00%
Thorney Opp Ltd	TOP	0.67	120.7	2.6	3.8%	5.5%	3.1%	n.a	n.a	0.95	-32.4%	-32.4%	-29.4%	-25.7%	0.75%
WAM Active Ltd	WAA	0.83	62.7	6.0	7.3%	10.4%	-5.2%	n.a	n.a	0.93	-2.9%	-8.9%	-5.1%	na	1.00%
WAM Strategic Value Ltd	WAR	1.17	209.8	5.3	4.5%	6.4%	0.0%	n.a	n.a	1.32	-9.4%	-13.0%	-11.6%	na	1.00%
WAM Alternative Assets	WMA	1.02	199.8	5.2	5.1%	7.3%	-0.4%	n.a	n.a	1.19	-10.0%	-15.6%	-13.7%	na	1.20%

Source: Company releases, Bloomberg, IRESS, OML estimates

Figures as at: 16 October 2024

*NTA is last reported NTA, adjusted for any dividends past ex-date. Current premium and discount is based on the discount at date of last disclosed NTA date.

NTA performance calculation methodology

- Unless stated otherwise, NTA performance in this report is calculated on pre-tax NTA basis, which refers to net tangible assets after tax paid but before tax on unrealised gains as well as cash dividends paid during the relevant period. TSR performance figures from Bloomberg and calculated with re-invested dividends. Active return refers to the TSR relative to that of the comparative index.
- LIC performance measurements reflect performance after all operating expenses and taxation. Using index benchmarks often understates performance as the indices used are before all operating expenses and tax. Total shareholder returns are often negatively impacted by capital events such as options, DRPs, share purchase plans and placements. Dividend yields contained within are historical and are not an indication of future dividend payments.



Fig. 1: LIC Performance Table (September 2024)

Traditional LICs	Code	1 Year			3 Year (annualised)			5 Year (annualised)		
		NTA performance	TSR Performance	Avg. Prem/Disc	NTA performance	TSR Performance	Avg. Prem/Disc	NTA performance	TSR Performance	Avg. Prem/Disc
Australian Foundat.	AFI	23.4%	12.3%	-6.2%	6.9%	-0.7%	2.7%	8.8%	6.6%	4.1%
Argo Investments	ARG	18.4%	7.3%	-7.1%	6.8%	3.8%	-0.9%	7.4%	5.5%	0.2%
Australian United In	AUI	23.0%	18.9%	-11.4%	9.5%	8.1%	-8.0%	8.3%	7.6%	-6.4%
BKI Investment Ltd	BKI	15.2%	5.5%	-5.3%	8.7%	7.7%	-3.0%	7.3%	6.3%	-3.1%
Djerriwarrh	DJW	18.6%	17.2%	-10.0%	5.2%	5.3%	-7.5%	5.6%	2.5%	-5.3%
Diversified United	DUI	19.4%	13.4%	-12.3%	6.7%	4.5%	-8.6%	7.7%	5.8%	-6.5%

Large Capitalisation	Code	1 Year			3 Year (annualised)			5 Year (annualised)		
		NTA Performance	TSR Performance	Avg. Prem/Disc	NTA Performance	TSR Performance	Avg. Prem/Disc	NTA Performance	TSR Performance	Avg. Prem/Disc
AMCIL Limited	AMH	27.2%	22.3%	-12.4%	4.2%	0.4%	-5.7%	9.9%	9.2%	-6.0%
Clime Capital	CAM	8.1%	7.4%	-0.9%	1.2%	0.8%	-1.0%	2.4%	3.2%	-1.7%
Cadence Capital	CDM	8.9%	6.1%	-12.8%	-6.8%	-5.8%	-9.5%	4.7%	5.2%	-10.9%
Carlton Investments	CIN	14.3%	12.1%	-24.4%	2.0%	1.0%	-22.9%	3.8%	2.3%	-21.0%
Future Gen Ltd	FGX	15.9%	16.5%	-13.4%	2.5%	0.7%	-10.6%	6.9%	7.4%	-10.1%
L1 Long Short Fund	LSF	11.1%	15.9%	-4.1%	4.4%	8.7%	-5.8%	15.5%	18.0%	-10.3%
Mirrabooka Invest.	MIR	24.0%	24.9%	1.5%	1.6%	-0.4%	4.1%	11.2%	10.6%	3.4%
Perpetual Equity Ltd	PIC	12.4%	7.3%	-8.1%	2.4%	3.9%	-5.5%	8.8%	9.3%	-6.5%
Plato Inc Max Ltd.	PL8	18.4%	6.5%	11.1%	7.0%	4.4%	13.4%	6.6%	7.1%	11.6%
WAM Leaders Limited	WLE	11.6%	0.6%	-0.3%	5.1%	3.0%	3.2%	8.3%	9.4%	2.6%
Whitefield Ltd	WHF	28.2%	13.2%	-7.1%	6.4%	3.2%	-2.2%	7.0%	6.2%	-1.0%

Small Capitalisation	Code	1 Year			3 Year (annualised)			5 Year (annualised)		
		NTA Performance	TSR Performance	Avg. Prem/Disc	NTA Performance	TSR Performance	Avg. Prem/Disc	NTA Performance	TSR Performance	Avg. Prem/Disc
Acorn Cap Inv Fund	ACQ	8.2%	-12.6%	-15.4%	-5.3%	-13.7%	-8.3%	3.8%	2.8%	-8.3%
ECP Emerging Co	ECP	33.7%	25.4%	-24.3%	2.9%	-0.2%	-20.3%	10.1%	11.2%	-19.7%
Naos Smlcap Com Ltd	NSC	-20.0%	-26.1%	-14.6%	-13.7%	-13.1%	-16.3%	-3.2%	-1.9%	-18.0%
Glennon SML Co Ltd	GC1	16.5%	11.1%	-30.7%	-7.1%	-14.1%	-24.0%	-1.0%	-6.4%	-22.5%
Naos Emerg Opp	NCC	-27.6%	-42.9%	-9.9%	-19.0%	-23.6%	-11.8%	-7.9%	-11.5%	-10.3%
NGE Capital Limited	NGE	22.1%	30.0%	-17.4%	12.7%	16.0%	-19.7%	10.0%	13.0%	-21.9%
Ophir High Cf	OPH	19.6%	12.8%	-11.9%	-0.7%	-8.1%	-4.8%	7.3%	6.5%	-2.7%
Ryder Capital Ltd	RYD	38.7%	34.1%	-16.0%	-1.1%	-4.4%	-13.5%	3.1%	2.0%	-12.7%
Salter Brothers	SB2	23.2%	20.6%	-36.2%	-2.6%	-3.0%	-31.7%	na	na	na
Spheria Emerging Co	SEC	22.6%	27.3%	-6.9%	1.1%	2.1%	-9.4%	8.0%	10.0%	-12.0%
WAM Capital Limited	WAM	18.2%	5.0%	-6.6%	3.3%	-4.0%	3.5%	6.2%	1.2%	9.2%
WAM Research Ltd	WAX	26.4%	14.1%	5.7%	4.4%	-5.3%	21.0%	7.1%	2.9%	25.4%
WAM Microcap Limited	WMI	21.1%	9.6%	8.4%	1.5%	-3.9%	13.7%	7.6%	8.7%	11.6%

International	Code	1 Year			3 Year (annualised)			5 Year (annualised)		
		NTA Performance	TSR Performance	Avg. Prem/Disc	NTA Performance	TSR Performance	Avg. Prem/Disc	NTA Performance	TSR Performance	Avg. Prem/Disc
Argo Global Ltd	ALI	16.9%	18.2%	-12.5%	2.7%	4.2%	-6.3%	-0.5%	3.9%	-6.4%
Future Glb Invest Co	FGG	15.1%	20.2%	-16.3%	0.8%	0.3%	-13.0%	5.2%	4.8%	-13.5%
Global Value Fnd Ltd	GVF	14.1%	16.0%	-7.2%	8.2%	6.7%	-5.4%	10.1%	9.7%	-4.8%
Pengana Int Equ Ltd	PIA	11.7%	17.5%	-15.8%	-0.2%	-2.9%	-13.8%	5.3%	5.9%	-13.0%
MFF Capital Inv Ltd	MFF	32.5%	34.1%	-14.6%	12.1%	12.5%	-15.9%	9.9%	7.8%	-12.5%
Platinum Asia Ltd	PAI	17.1%	32.2%	-11.4%	0.9%	2.7%	-12.5%	5.9%	7.4%	-11.2%
Pm Capital Fund	PGF	26.7%	26.6%	2.4%	15.6%	21.7%	-0.1%	15.9%	22.5%	-6.2%
Platinum Capital Ltd	PMC	4.6%	15.9%	-11.5%	1.8%	4.9%	-13.0%	3.4%	2.9%	-11.2%
Regal Asian Investments	RG8	14.4%	20.3%	-13.6%	4.6%	6.9%	-15.0%	na	na	na
WAM Global	WGB	16.4%	21.6%	-10.5%	2.1%	0.5%	-11.7%	5.5%	6.0%	-10.3%
VGI Partners Global	VG1	23.5%	36.7%	-12.6%	2.2%	3.9%	-15.2%	1.5%	1.7%	-14.5%

Specialist	Code	1 Year			3 Year (annualised)			5 Year (annualised)		
		NTA Performance	TSR Performance	Avg. Prem/Disc	NTA Performance	TSR Performance	Avg. Prem/Disc	NTA Performance	TSR Performance	Avg. Prem/Disc
Bailador Tech Inv	BTI	9.5%	6.4%	-29.9%	10.4%	-1.7%	-26.7%	12.0%	10.1%	-23.7%
Hearts and Minds	HM1	26.1%	29.6%	-16.6%	-1.7%	-8.0%	-14.6%	6.3%	3.8%	-7.8%
Lowell Res Fund	LRT	7.2%	5.4%	-11.3%	-1.3%	3.6%	-12.3%	24.4%	29.4%	-14.4%
Lion Selection Grp	LSX	19.0%	27.2%	-30.1%	10.4%	11.5%	-29.2%	13.1%	7.8%	-26.9%
Naos Ex-50	NAC	-43.8%	-43.8%	1.1%	-28.0%	-19.8%	-8.5%	-10.9%	-6.0%	-13.7%
Regal Invest Fund	RF1	23.7%*	30.7%*	-5.6%	7.0%	0.6%	-2.2%	18.3%	18.9%	-1.5%
Sandon Capital Ltd	SNC	27.1%	27.8%	-14.0%	-0.9%	-0.4%	-13.7%	6.2%	7.2%	-14.5%
Tribeca Glb Resources	TGF	-3.8%	-4.5%	-19.6%	-7.0%	-6.4%	-17.4%	-1.0%	-0.7%	-18.3%
Thorney Technologies Ltd	TEK	2.4%	-18.1%	-40.3%	-21.1%	-32.3%	-33.1%	na	-13.2%	na
Thorney Opp Ltd	TOP	38.1%	42.9%	-32.4%	12.1%	10.0%	-29.4%	5.5%	3.3%	-26.2%
WAM Active Ltd	WAA	17.1%	29.4%	-8.9%	2.1%	1.3%	-5.1%	3.9%	2.1%	-2.4%
WAM Strategic Value Ltd	WAR	15.2%	20.1%	-13.0%	3.1%	1.4%	-11.6%	na	na	na
WAM Alternative Assets	WMA	2.7%	-5.2%	-15.6%	4.1%	4.0%	-13.7%	4.5%	9.2%	-15.9%

Source: Bloomberg, IRESS, OML

Australian United Investment Company (AUI)

www.aui.com.au

- AUI was founded in 1953 by the late Sir Ian Potter and The Ian Potter Foundation.
- AUI utilises a “traditional” investment philosophy, focusing on risk reduction by investing in a range of large and mid-cap companies on the ASX.
- Investments are chosen on their individual merits, with no pre-determined policy that any particular proportion of the capital will be invested in particular investment sectors.
- The total shareholder return for the year ending 30 September 2024 was 18.9%, with pre-tax NTA increasing 23.0%. The active return (TSR) was -2.8%.

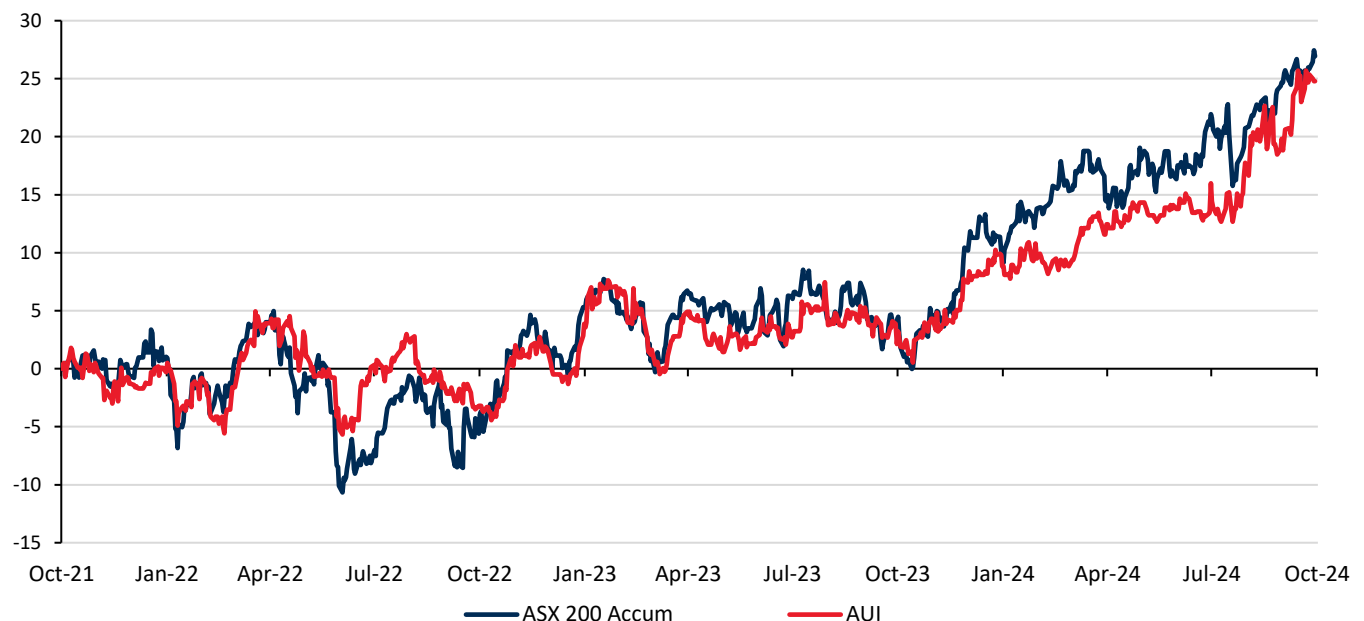
Fig. 1: AUI Snapshot

AUI Snapshot				Top Holdings			
Price (30 September 2024)			\$11.01	Commonwealth Bank.			9.7%
Share price range (12 months)			\$9.30- \$11.14	BHP Group Limited			7.8%
Shares on issue (Mn)			124.1	CSL Limited			7.2%
Market capitalisation (\$Mn)			\$1,366	RIO Tinto Limited			6.0%
Pre-tax asset backing*			\$12.28	Wesfarmers Limited			5.7%
Post-tax asset backing*			\$10.11	Diversified United			4.7%
Premium/(Discount) to pre-tax NTA			-10.3%	Woodside Energy			4.7%
Premium/(Discount) to post-tax NTA			8.9%	ANZ Banking Grp Ltd			4.6%
Dividend yield			4.1%	Transurban Group			4.5%
Dividend per share (cents)			45.0	Westpac Banking Corp			4.0%
Franking			100%				
Management expense ratio			0.10%				

Total Shareholder Return	1 Year	3 Year	5 Year	NTA Performance	1 Year	3 Year	5 Year
AUI	18.9%	8.1%	7.6%	NTA growth	23.0%	9.5%	8.3%
Active return	-2.8%	-0.3%	-0.8%	Active return	1.3%	1.0%	-0.1%

Source: IRESS, Bloomberg, OML, Company reports. Figures as at 30 September 2024. Active returns refers to the TSR and NTA growth relative to that of the comparative index (see chart below).

Fig. 2: AUI TSR vs ASX 200 Accum. Index



Source: Bloomberg, OML

BKI Investment Company (BKI)

www.bkilimited.com.au

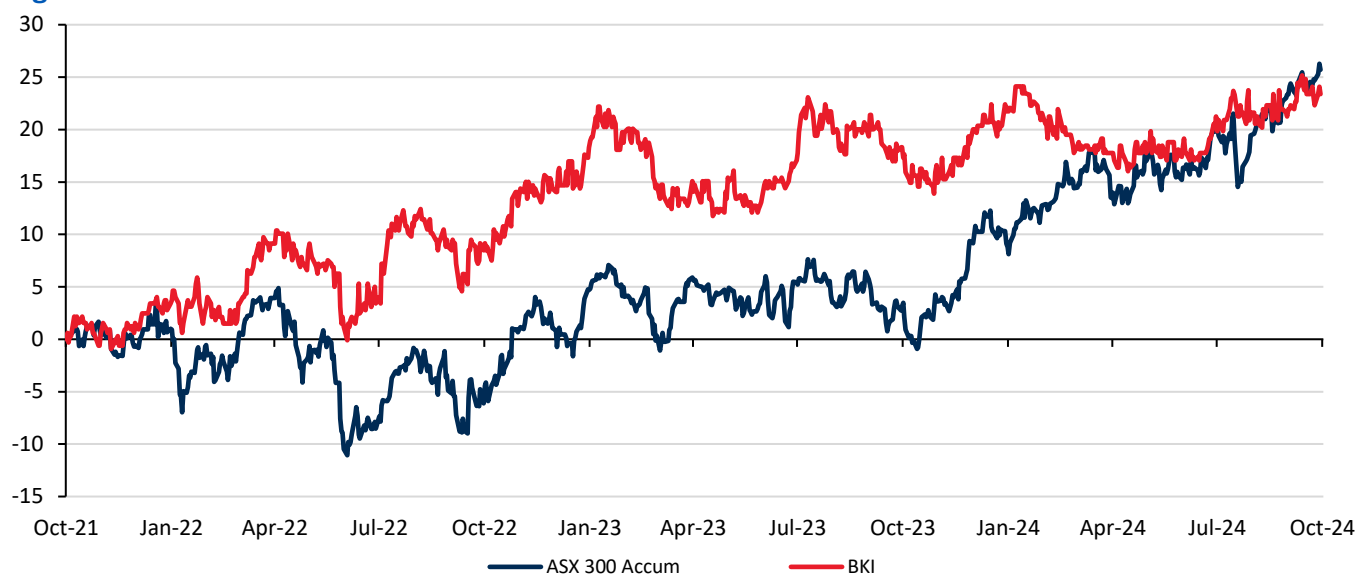
- BKI was listed on the ASX in December 2003 with an objective to provide investors with sound dividend yields and long-term capital growth.
- BKI invests in a diversified portfolio of Australian shares, trusts and interest-bearing securities, focusing on securities that are paying an increasing dividend stream.
- The total shareholder return for the year ending 30 September 2024 was 5.5%, with pre-tax NTA increasing 15.2%. The active return (TSR) was -16.2%.

Fig.4: BKI Snapshot

BKI Snapshot		Top Holdings		NTA Performance			
Price (30 September 2024)	\$1.76	BHP Group Limited		1 Year	3 Year		
Share price range (12 months)	\$1.67- \$1.82	Commonwealth Bank.	8.5%	15.2%	8.7%		
Shares on issue (Mn)	807.1	Macquarie Group Ltd	7.4%	3 Year	5 Year		
Market capitalisation (\$Mn)	\$1,421	National Aust. Bank	5.9%	0.5%	-0.9%		
Pre-tax asset backing*	\$1.91	APA Group	4.9%				
Post-tax asset backing*	\$1.76	Wesfarmers Limited	4.4%				
Premium/(Discount) to pre-tax NTA	-7.9%	New Hope Corporation	4.4%				
Premium/(Discount) to post-tax NTA	0.0%	Woodside Energy	3.6%				
Dividend yield	4.5%	Telstra Corporation.	3.4%				
Dividend per share (cents)	7.9	Harvey Norman	3.0%				
Franking	100%	ARB Corporation.	3.0%				
Management expense ratio	0.18%	Transurban Group	3.0%				
Total Shareholder Return	1 Year	3 Year	5 Year	NTA Performance	1 Year	3 Year	5 Year
BKI	5.5%	7.7%	6.3%	NTA growth	15.2%	8.7%	7.3%
Active return	-16.2%	-0.5%	-2.0%	Active return	-6.4%	0.5%	-0.9%

Source: IRESS, Bloomberg, OML, Company reports. Figures as at 30 September 2024. Active returns refers to the TSR and NTA growth relative to that of the comparative index (see chart below).

Fig.5: BKI TSR vs ASX 300 Accum. Index



Source: Bloomberg, OML

L1 Long Short Fund (LSF)

www.l1longshort.com

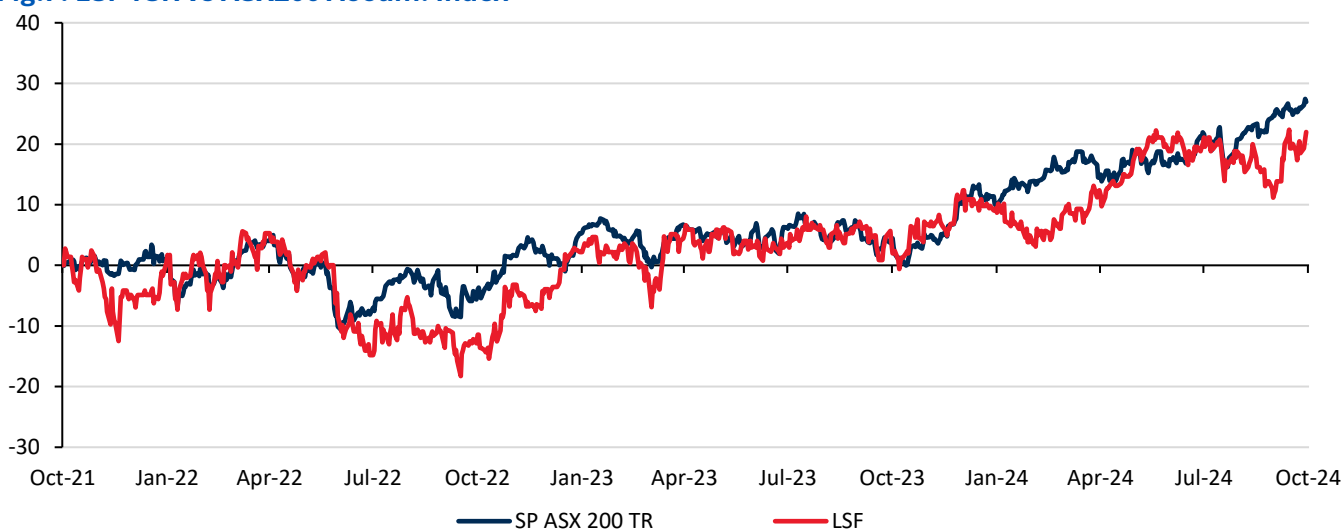
- LSF listed in April-18 following a \$1.3bn raising. LSF has dual investment objectives to 1) seek to deliver strong, positive, risk-adjusted returns over the long term (being a period of more than five years); and 2) preserve capital.
- LSF utilises a fundamental, bottom-up research process to seek and identify mispriced securities with the potential to provide attractive risk adjusted returns. The manager may take short positions in companies it considers to be overvalued, or of low quality and/or over-gearred.
- The total shareholder return for the year ending 30 September 2024 was 15.9%, with pre-tax NTA increasing 11.1%. The active return (TSR) was -5.8%.

Fig.6: LSF Snapshot

LSF Snapshot				Key contributors/detractors to portfolio performance			
Price (30 September 2024)			\$3.13	Contributors			
Share price range (12 months)			\$2.67- \$3.22	Fraport			
Shares on issue (Mn)			625.5	Mineral Resources			
Market capitalisation (\$Mn)			\$1,958	NexGen			
Pre-tax asset backing*			\$3.17	Rightmove			
Post-tax asset backing*			\$3.07				
Premium/(Discount) to pre-tax NTA			-1.3%				
Premium/(Discount) to post-tax NTA			2.0%				
Dividend yield			3.7%				
Dividend per share (cents)			11.8				
Franking			100%				
Management expense ratio			1.44%				
				*Alphabetical			
Total Shareholder Return				NTA Performance			
	1 Year	3 Year	5 Year		1 Year	3 Year	5 Year
LSF	15.9%	8.7%	18.0%	NTA growth	11.1%	4.4%	15.5%
Active return	-5.8%	0.2%	9.6%	Active return	-10.6%	-4.0%	7.1%

Source: IRESS, Bloomberg, OML, Company reports. Figures as at 30 September 2024. Active returns refers to the TSR and NTA growth relative to that of the comparative index (see chart below).

Fig.7: LSF TSR vs ASX200 Accum. Index



Source: Bloomberg, OML

AMCIL (AMH)

www.amcil.com.au

- AMCIL manages a concentrated investment portfolio comprising 30 to 40 stocks covering large and small companies in the Australian and New Zealand equity markets. Its investment approach is to construct a focused portfolio in which large and small companies can have an equally important impact on investment returns.
- By utilising an active, fundamental and bottom-up approach, the fund aims to provide shareholders with returns that exceed returns from the market (S&P/ASX 200 Index) over the medium to long term.
- The total shareholder return for the year ending 30 September 2024 was 22.3%, with pre-tax NTA increasing 27.2%. The active return (TSR) was 0.6%.

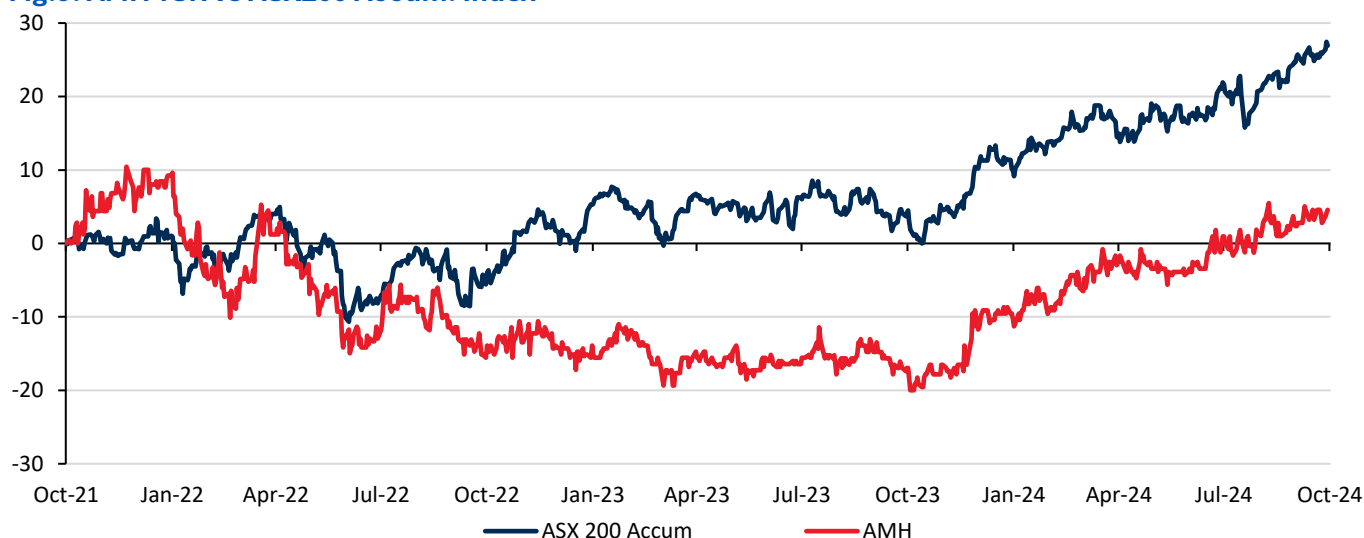
Fig.8: AMH Snapshot

AMH Snapshot		Top Holdings		%
Price (30 September 2024)	\$1.15	CSL Limited		8.2%
Share price range (12 months)	\$0.92- \$1.17	Macquarie Group Ltd		6.0%
Shares on issue (Mn)	318.0	BHP Group Limited		5.1%
Market capitalisation (\$Mn)	\$366	Goodman Group		5.0%
Pre-tax asset backing*	\$1.32	Wesfarmers Limited		4.7%
Post-tax asset backing*	\$1.17	Carsales.Com Ltd.		4.1%
Premium/(Discount) to pre-tax NTA	-12.9%	Macquarie Telecom Gp		4.0%
Premium/(Discount) to post-tax NTA	-1.7%	Mainfreight		4.0%
Dividend yield	3.4%	ARB Corporation.		3.9%
Dividend per share (cents)	4.0	Transurban Group		3.9%
Franking	100%			
Management expense ratio	0.56%			

Total Shareholder Return	1 Year	3 Year	5 Year	NTA Performance	1 Year	3 Year	5 Year
AMH	22.3%	0.4%	9.2%	NTA growth	27.2%	4.2%	9.9%
Active return	0.6%	-8.0%	0.8%	Active return	5.5%	-4.3%	1.5%

Source: IRESS, Bloomberg, OML, Company reports. Figures as at 30 September 2024. Active returns refers to the TSR and NTA growth relative to that of the comparative index (see chart below).

Fig.9: AMH TSR vs ASX200 Accum. Index



Source: Bloomberg, OML

Spheria Emerging Companies (SEC)

www.spheria.com.au

- SEC is managed by Spheria Asset Management; a fundamental bottom-up investment manager specialising in small and microcap companies. SEC listed in December 2017 following a ~\$132m raise.
- SEC aims to grow shareholder wealth over the long-term by generating absolute returns in excess of the benchmark, at below market levels of risk.
- The total shareholder return for the year ending 30 September 2024 was 27.3%, with pre-tax NTA increasing 22.6%. The active return (TSR) was 8.6%.

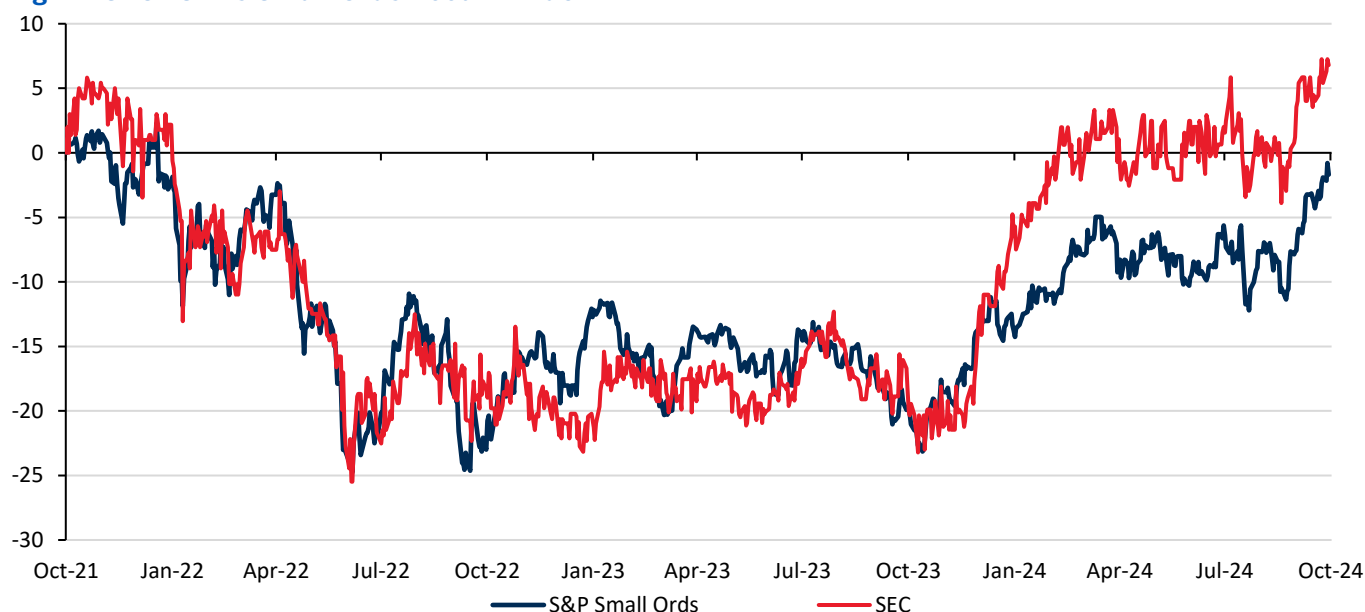
Fig.10: SEC Snapshot

SEC Snapshot		Top Holdings (August)		%
Price (30 September 2024)	\$2.28	Supply Network		5.3%
Share price range (12 months)	\$1.73- \$2.31	Bega Cheese Ltd		4.9%
Shares on issue (Mn)	59.8	Healius		4.7%
Market capitalisation (\$Mn)	\$136	IRESS Limited		4.4%
Pre-tax asset backing*	\$2.41	Breville Group Ltd		3.0%
Post-tax asset backing*	\$2.35	Universal Store		2.9%
Premium/(Discount) to pre-tax NTA	-5.3%	The Star Ent Grp		2.9%
Premium/(Discount) to post-tax NTA	-3.1%	Technology One		2.8%
Dividend yield	5.2%	Deterra Royalties		2.8%
Dividend per share (cents)	12.0	Horizon Oil Limited		2.6%
Franking	100%			
Management expense ratio	1.00%			

Total Shareholder Return	1 Year	3 Year	5 Year	NTA Performance	1 Year	3 Year	5 Year
SEC	27.3%	2.1%	10.0%	NTA growth	22.6%	1.1%	8.0%
Active return	8.6%	2.6%	5.6%	Active return	3.9%	1.7%	3.6%

Source: IRESS, Bloomberg, OML, Company reports. Figures as at 30 September 2024. Active returns refers to the TSR and NTA growth relative to that of the comparative index (see chart below).

Fig.11: SEC TSR vs Small Ords Accum. Index



Source: Bloomberg, OML

Regal Investment Fund (RF1)

www.regalfm.com

- The manager, established in 2004, is a specialist alternative investment manager, with a primary focus on long short investment strategies. RF1 was listed in Jun-19, following a \$282m raising.
- RF1 is constructed by the Manager through the selection and allocation of funds to a number of Regal strategies.
- The allocations to strategies as at 30 September 2024 was Emerging Companies (24%), Resources Royalties (16%), Small Companies (13%), Private Credit (16%), Market Neutral (9%), Global Alpha (9%), Global Long Short (7%), and Water (5%).
- The total shareholder return for the year ending 30 September 2024 was 30.7%, with pre-tax NTA increasing 23.7%. The active return (TSR) was 9.0%.

Fig.13: RF1 Snapshot

RF1 Snapshot		Top Holdings		%
Price (30 September 2024)	\$3.45	Exposure by Strategy		
Share price range (12 months)	\$2.64- \$3.51	Emerging Companies		24%
Shares on issue (Mn)	186.4	Resources Royalties		16%
Market capitalisation (\$Mn)	\$643	Small Companies		13%
Pre-tax asset backing*	\$3.45	Private Credit		16%
Post-tax asset backing*	n.a	Market Neutral		9%
Premium/(Discount) to pre-tax NTA	0.0%	Global Alpha		9%
Premium/(Discount) to post-tax NTA	n.a	Global Long Short		7%
Dividend yield	6.3%	Water		5%
Dividend per share (cents)	22.1			
Franking	0%			
Management expense ratio	1.50%			

Total Shareholder Return	1 Year	3 Year	5 Year	NTA Performance	1 Year	3 Year	5 Year
RF1	30.7%	0.6%	18.9%	NTA growth	23.7%	7.0%	18.3%
Active return	9.0%	-7.5%	10.6%	Active return	2.0%	-1.1%	10.0%

Source: IRESS, Bloomberg, OML, Company reports. Figures as at 30 September 2024. Active returns refers to the TSR and NTA growth relative to that of the comparative index (see chart below).

Fig.14: RF1 TSR vs ASX300 Accum. Index



Source: Bloomberg, OML

PM Capital Global Opportunities Fund (PGF)

www.pmcapital.com.au

- Managed by PM Capital, PGF began trading on the ASX on 11 December 2013. PGF provides exposure to international equities with a portfolio size of generally 25-45 holdings.
- Investment exposures as at 30 September 2024 include Global Domestic Banking (Europe & USA, 35%), Energy (12%), Industrial Metals (16%), Industrials (12%), Gaming (10%), Housing Ireland & Spain (7%), and Alternative Managers (5%).
- The total shareholder return for the year ending 30 September 2024 was 26.6%, with pre-tax NTA increasing 26.7%. The active return (TSR) was 3.3%.

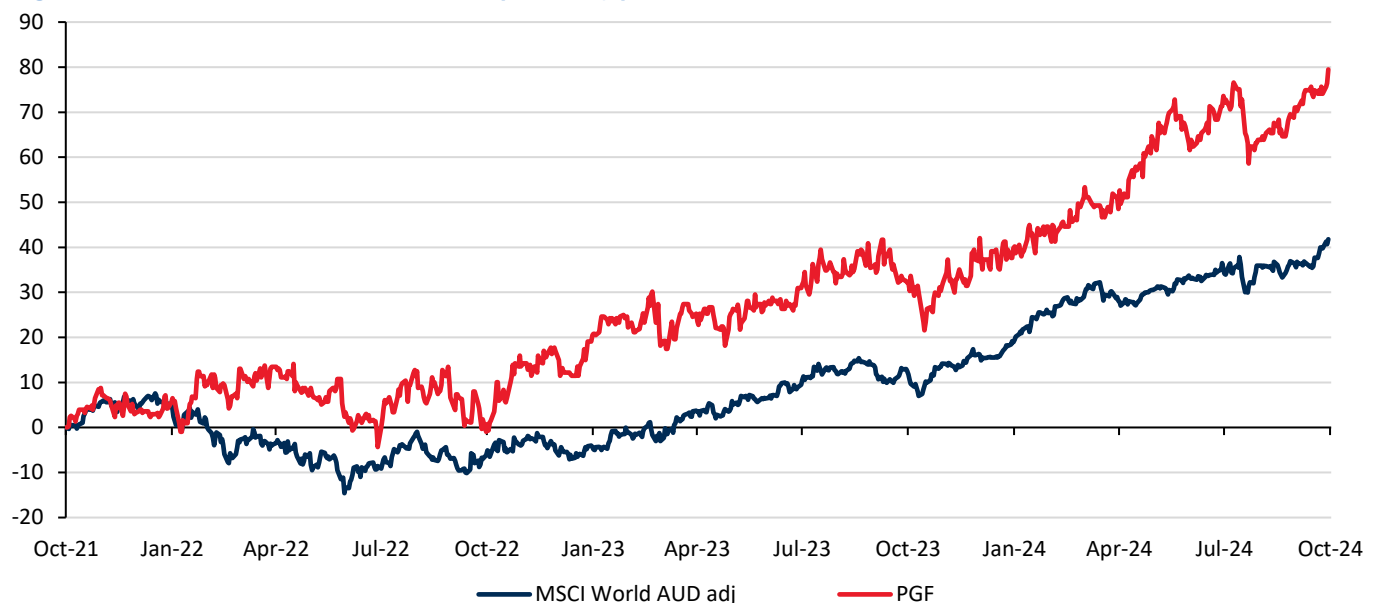
Fig.14: PGF Snapshot

PGF Snapshot				Top Holdings			
Price (30 September 2024)			\$2.28	Allied Irish Bank			
Share price range (12 months)			\$1.67- \$2.36	Apollo Global Management			
Shares on issue (Mn)			478.9	Bank of America			
Market capitalisation (\$Mn)			\$1,092	CaixaBank			
Pre-tax asset backing*			\$2.16	ING Groep			
Post-tax asset backing*			\$1.91	Lloyds Banking Group			
Premium/(Discount) to pre-tax NTA			5.4%	Shell			
Premium/(Discount) to post-tax NTA			19.1%	Siemens AG			
Dividend yield			4.5%	Teck Resources			
Dividend per share (cents)			10.5	Wynn Resorts			
Franking			100%				
Management expense ratio			1.00%				

Total Shareholder Return	1 Year	3 Year	5 Year	NTA Performance	1 Year	3 Year	5 Year
PGF	26.6%	21.7%	22.5%	NTA growth	26.7%	15.6%	15.9%
Active return	3.3%	10.7%	9.6%	Active return	3.3%	4.6%	3.0%

Source: IRESS, Bloomberg, OML, Company reports. Figures as at 30 September 2024. Active returns refers to the TSR and NTA growth relative to that of the comparative index (see chart below).

Fig.15: PGF TSR vs MSCI World Index (AUD adj.)

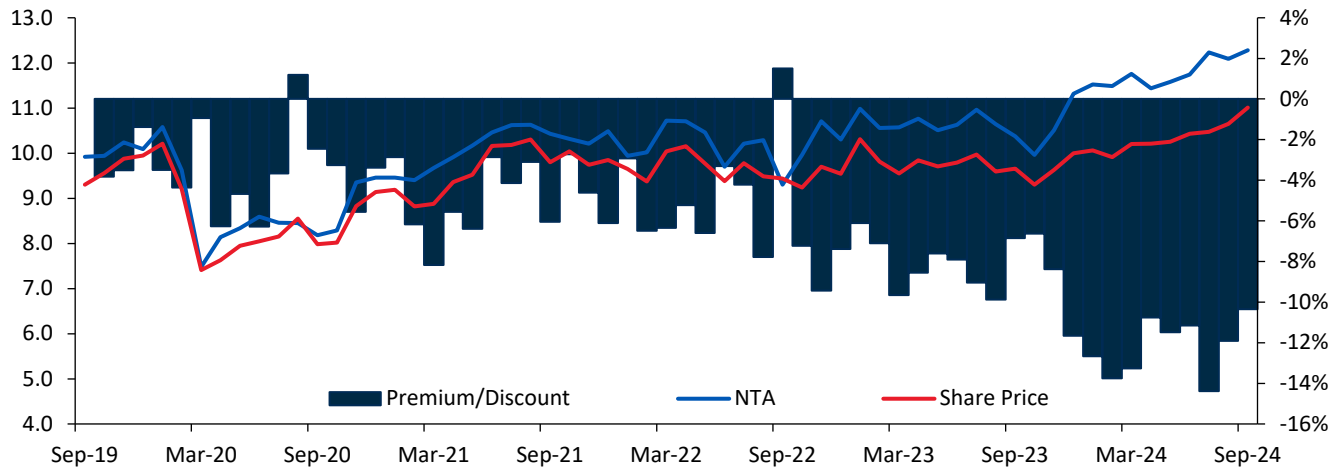


Source: Bloomberg, OML



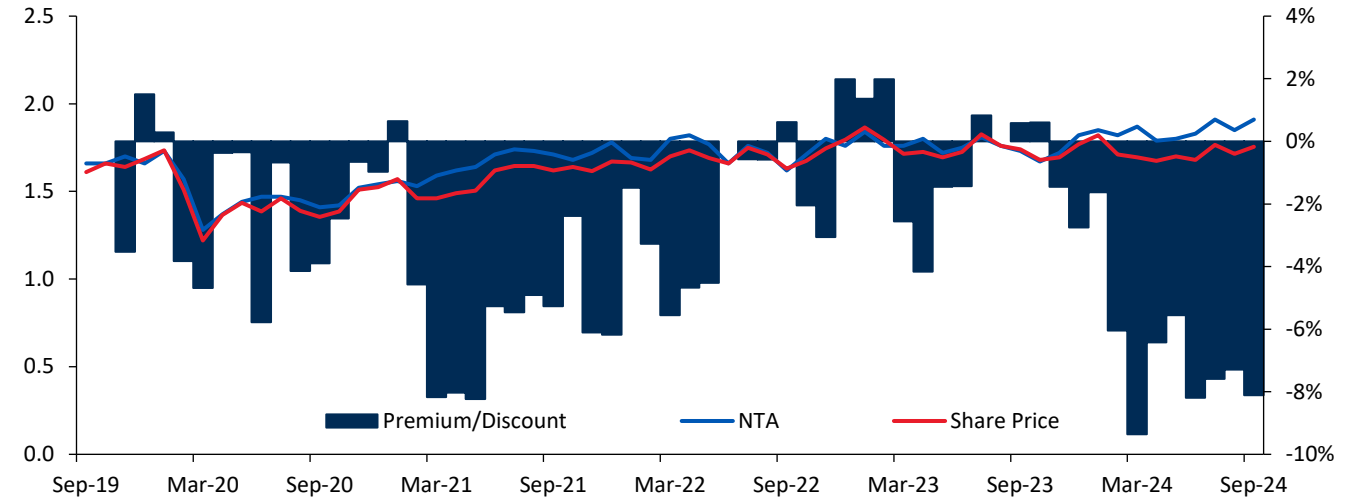
Appendix – Historical Premium/Discounts for Preferred LICs

Fig.16: Australian United Investment Company (AUI)



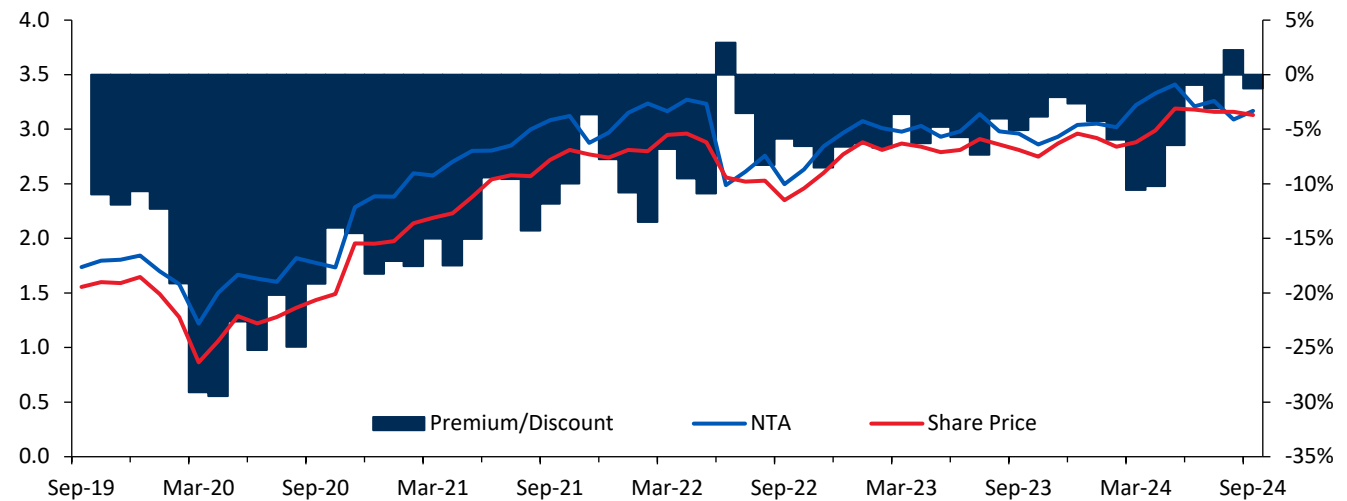
Source: Bloomberg, IRESS, OML.

Fig.17: BKI Investment Company (BKI)



Source: Bloomberg, IRESS, OML.

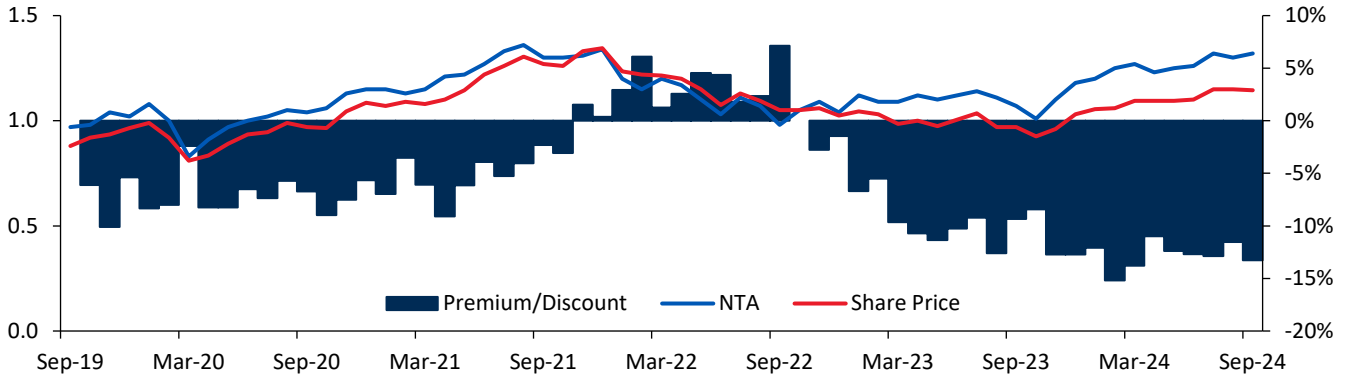
Fig.18: L1 Long Short Fund (LSF)



Source: Bloomberg, IRESS, OML.

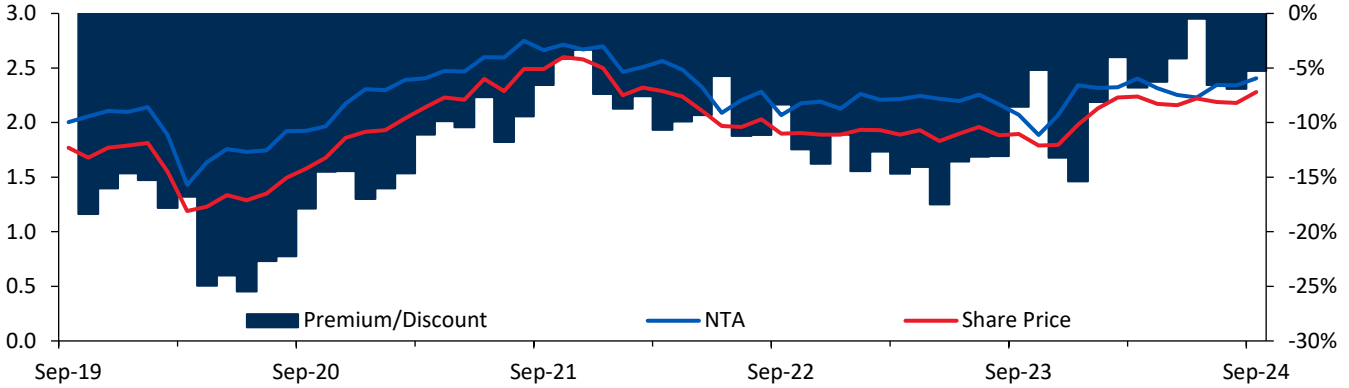


Fig.19: AMCIL (AMH)



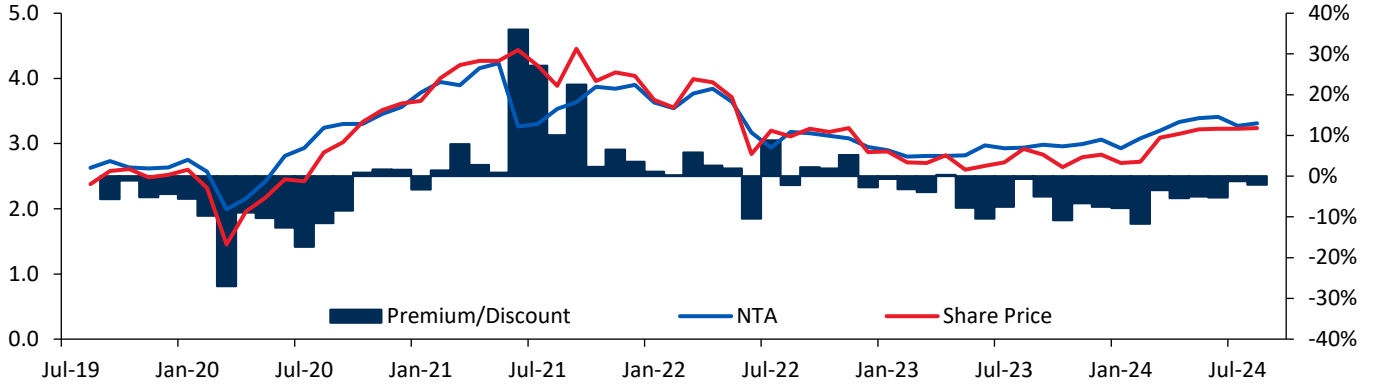
Source: Bloomberg, IRESS, OML.

Fig.20: Spheria Emerging Companies Limited (SEC)



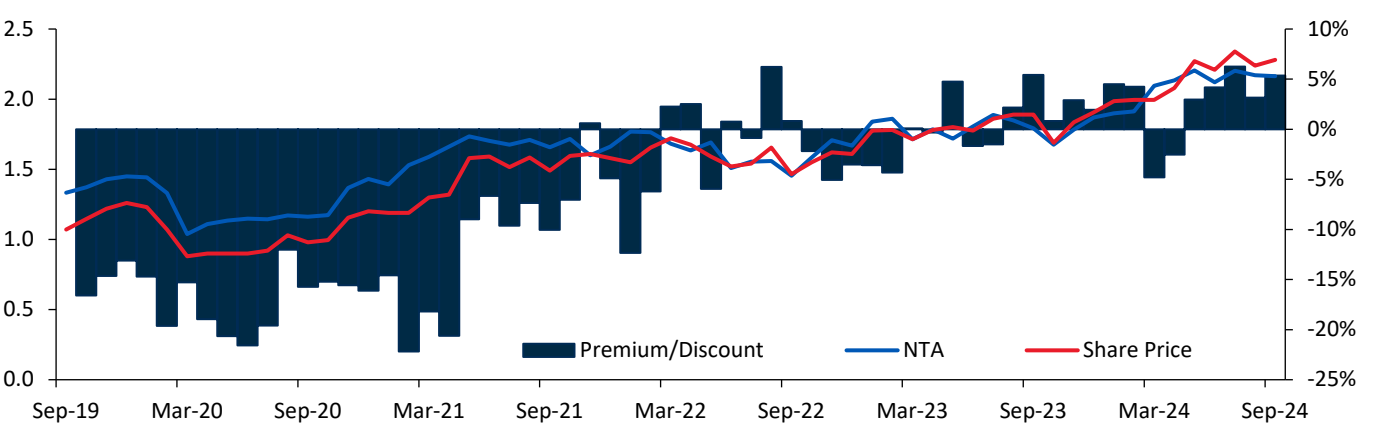
Source: Bloomberg, IRESS, OML.

Fig.21: Regal Investment Fund (RF1)



Source: Bloomberg, IRESS, OML.

Fig.22: PM Capital Global Fund (PGF)

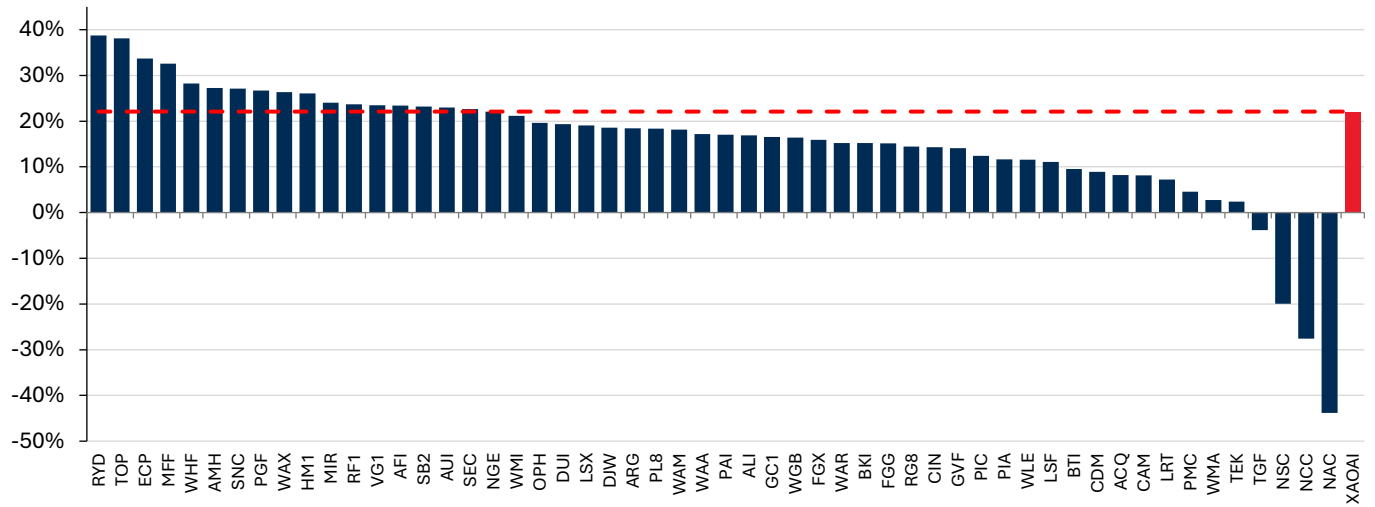


Source: Bloomberg, IRESS, OML.



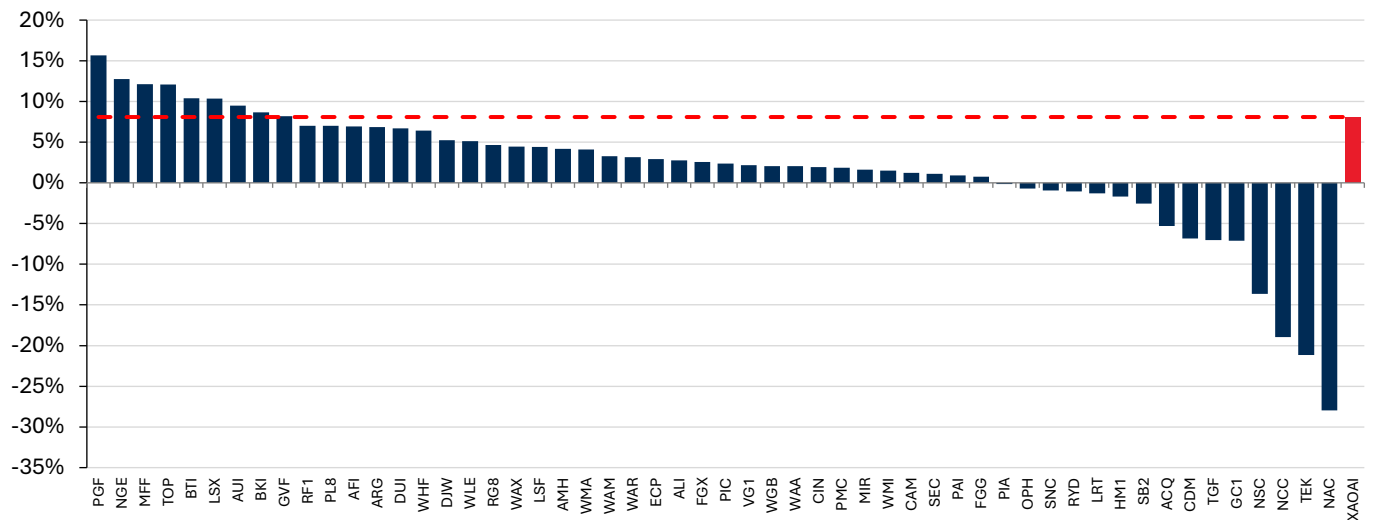
1, 3 and 5-year NTA & total shareholder return growth

Fig.5: NTA compound annual growth rate – % return over 12 months



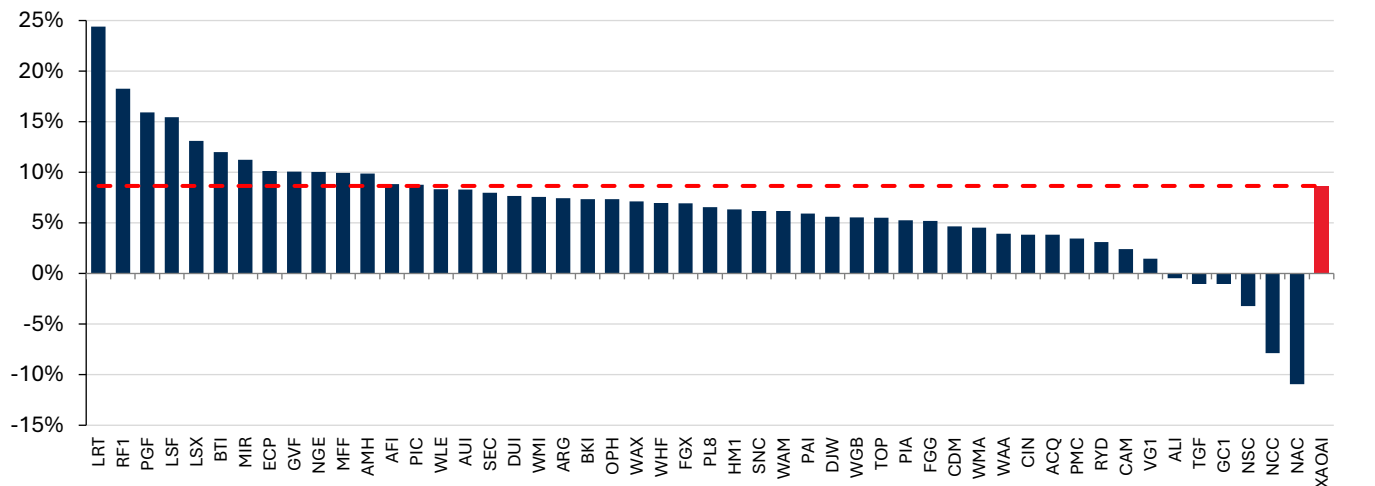
Source: Bloomberg, IRESS, OML. Figures as at 30 September 2024.

Fig.24: NTA compound annual growth rate – % return over 3 years



Source: Bloomberg, IRESS, OML. Figures as at 30 September 2024.

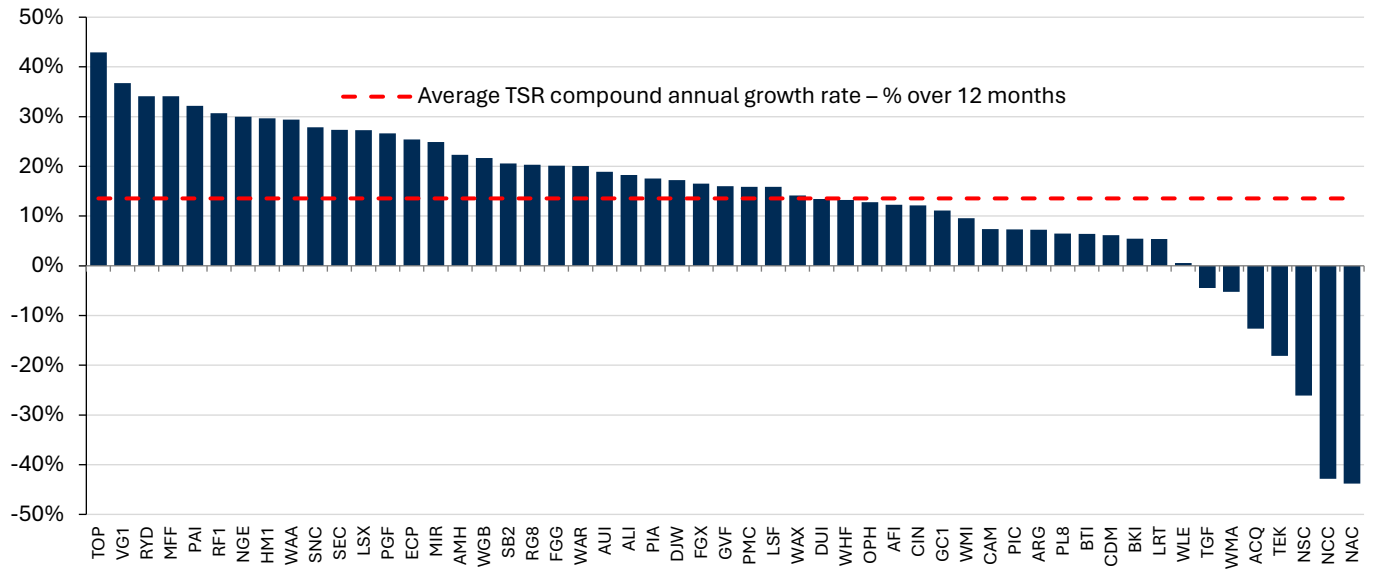
Fig.25: NTA compound annual growth rate – % return over 5 years



Source: Bloomberg, IRESS, OML. Figures as at 30 September 2024.

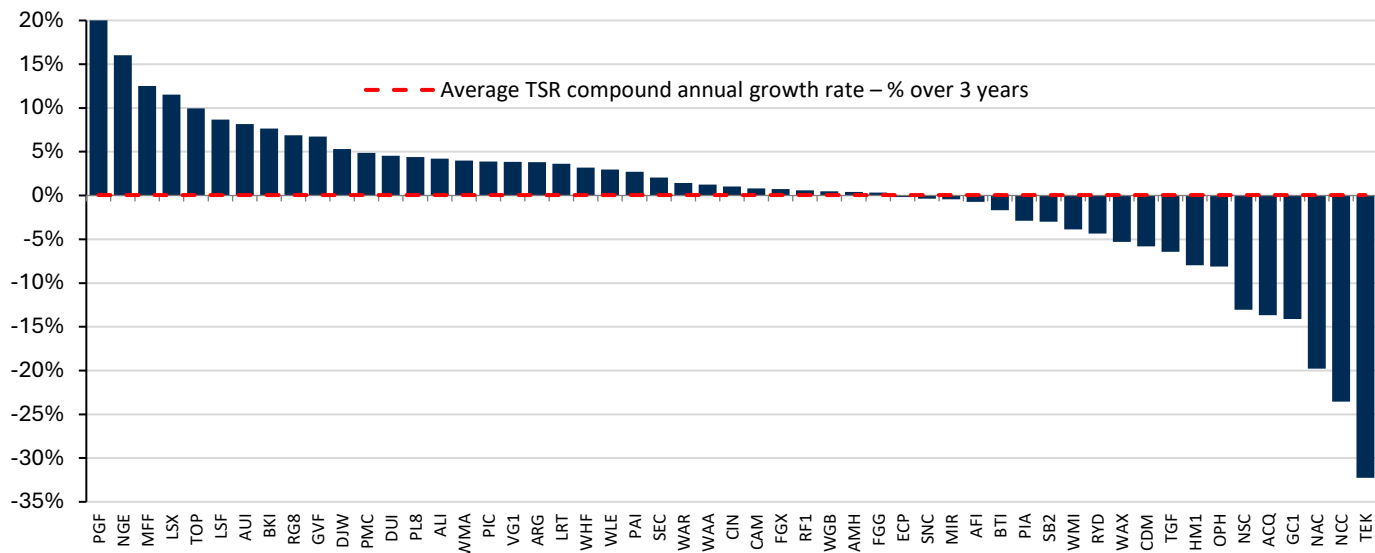


Fig.26: TSR compound annual growth rate – % over 12 months



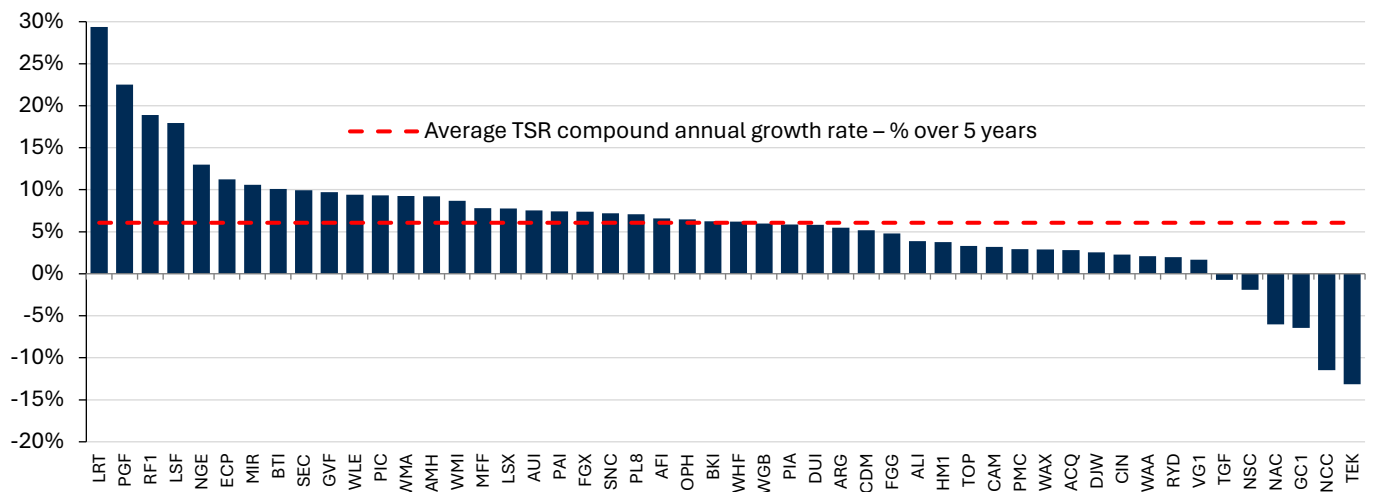
Source: Bloomberg, IRESS, OML. Figures as at 30 September 2024.

Fig.27: TSR compound annual growth rate – % over 3 years



Source: Bloomberg, IRESS, OML. Figures as at 30 September 2024.

Fig.28: TSR compound annual growth rate – % over 5 years

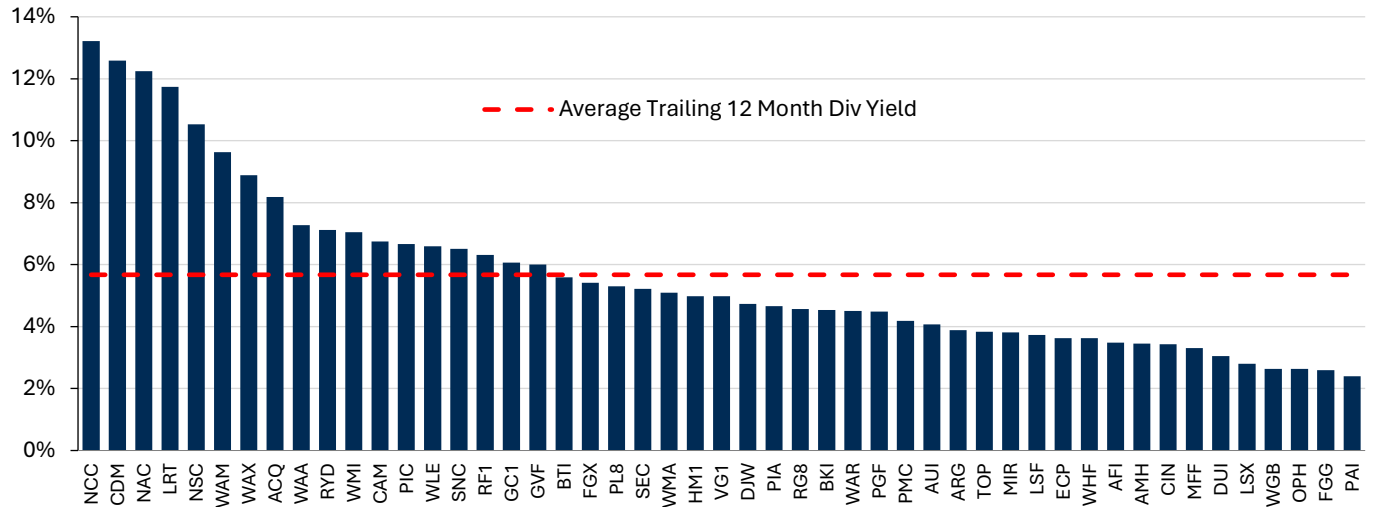


Source: Bloomberg, IRESS, OML. Figures as at 30 September 2024.



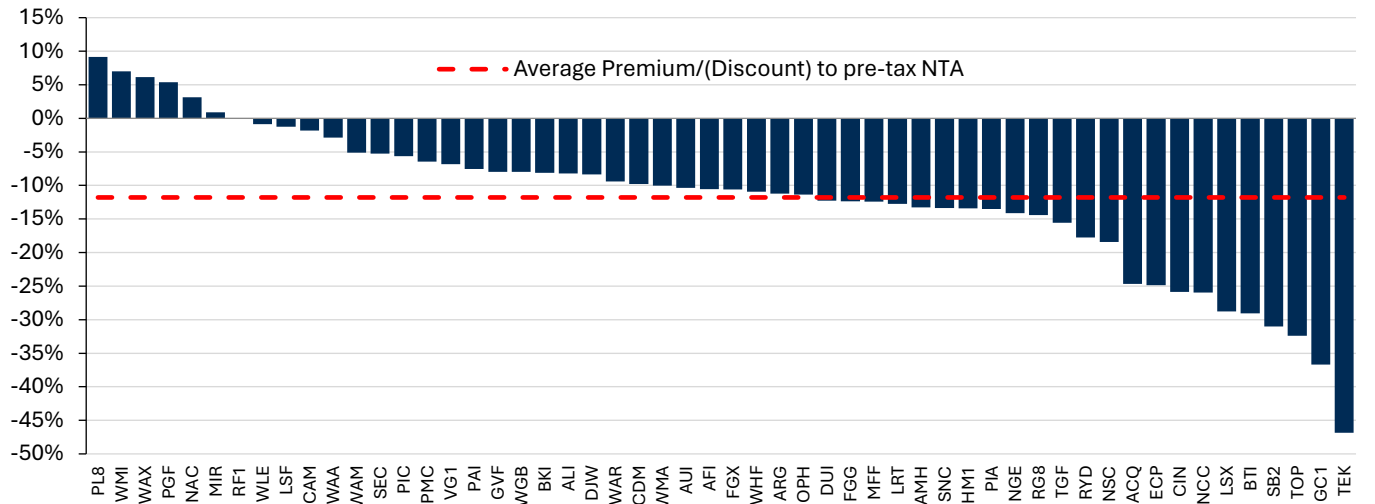
Dividend yield, pre & post tax discount/premium to NTA

Fig.29: Trailing 12-month dividend yield and average



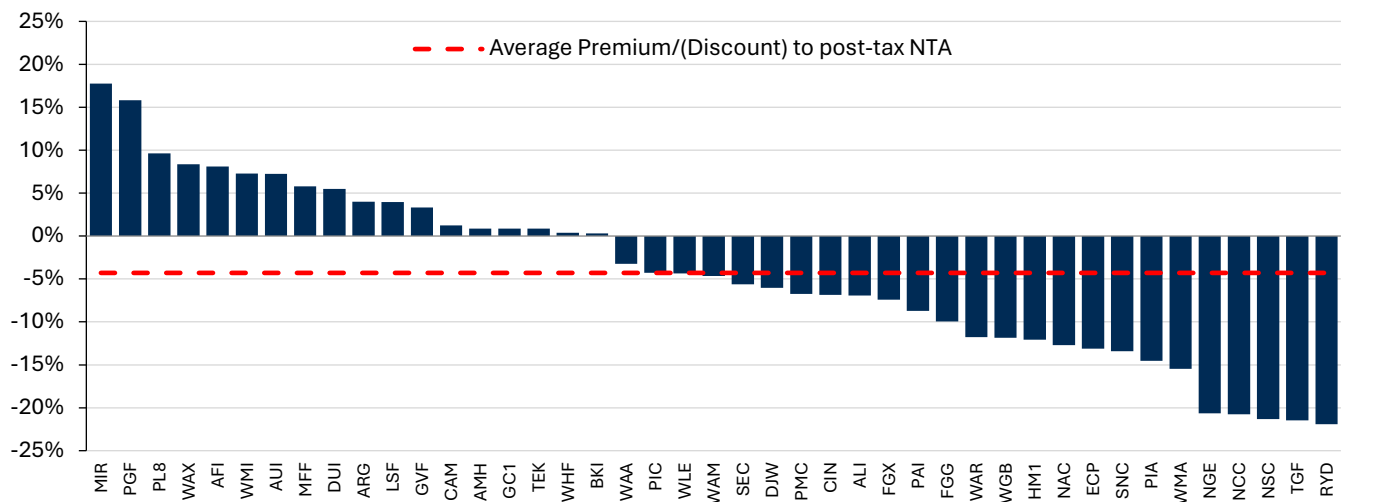
Source: Bloomberg, IRESS, OML. Figures as at 30 September 2024. LICs with no yield excluded.

Fig.30: Premium/(Discount) to pre-tax NTA



Source: Bloomberg, IRESS, OML. Figures as at 30 September 2024.

Fig.31: Premium/(Discount) to post-tax NTA

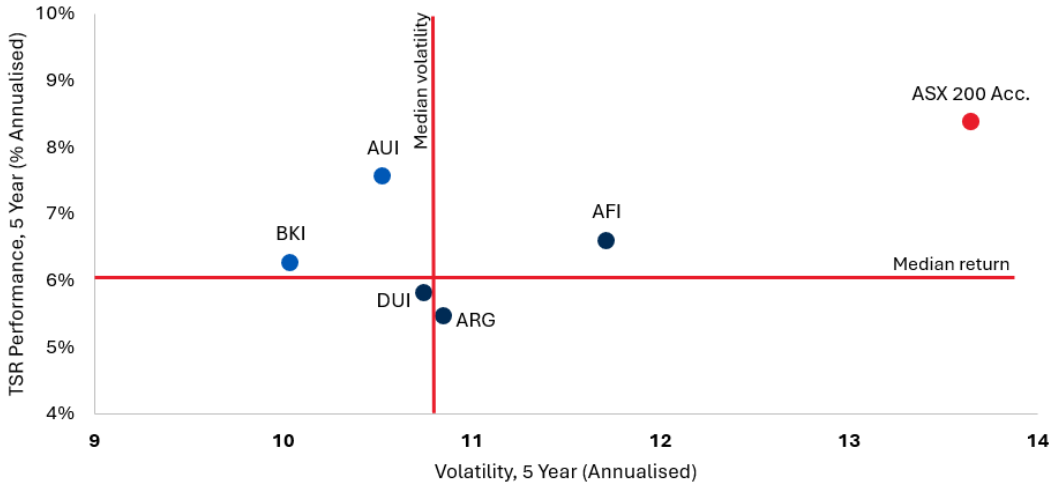


Source: Bloomberg, IRESS, OML. Figures as at 30 September 2024.



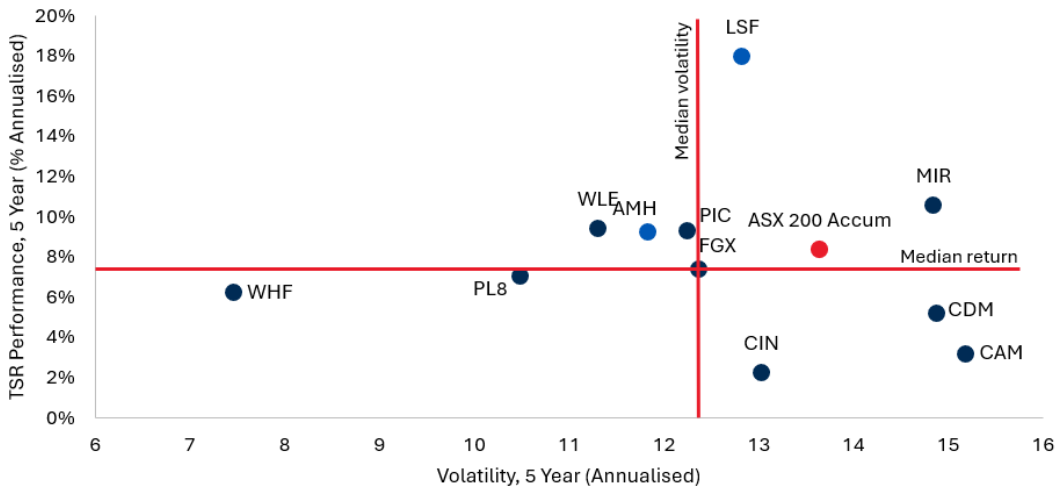
Return Volatility

Fig.32: Traditional LICs



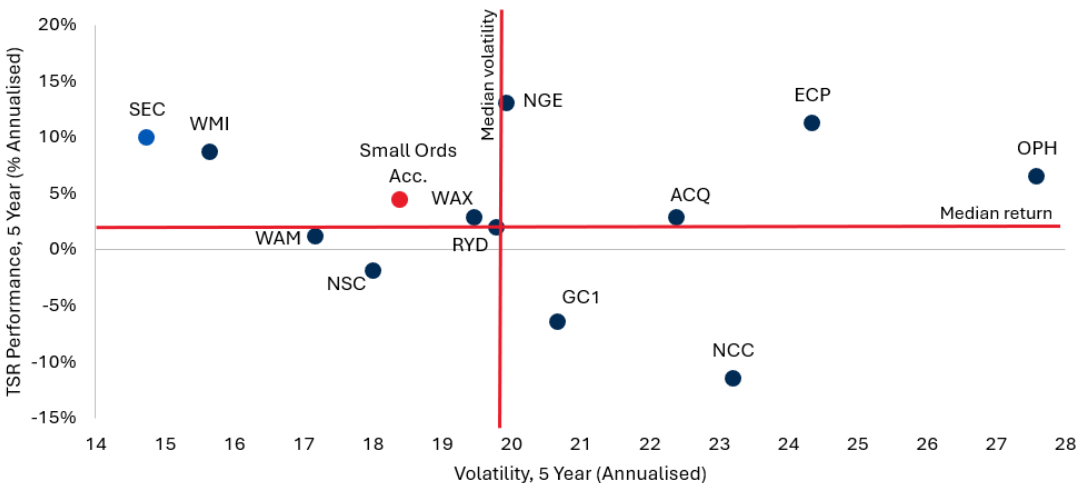
Source: Bloomberg, IRESS, OML.

Fig.33: Large Capitalisation LICs



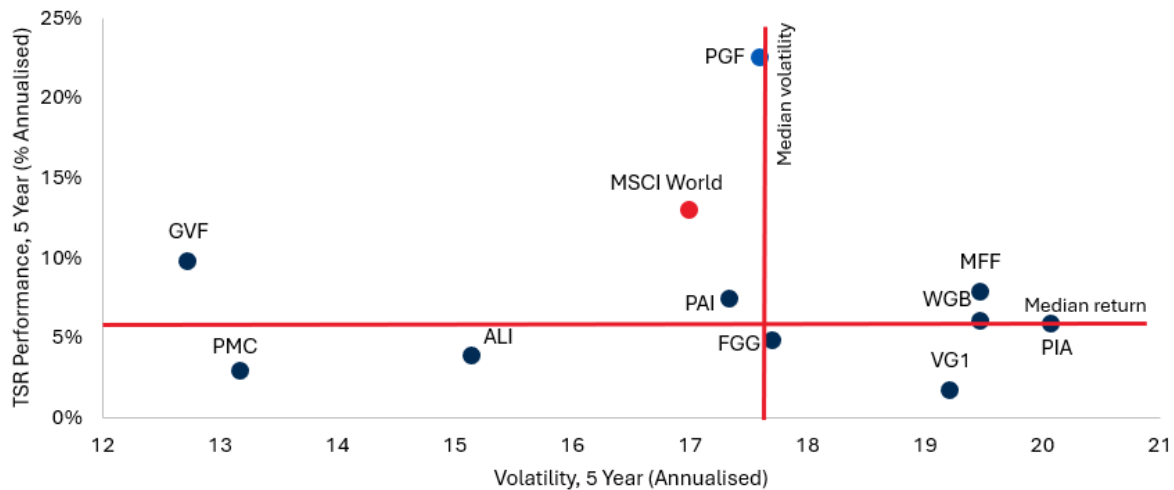
Source: Bloomberg, IRESS, OML.

Fig.34: Small Capitalisation LICs



Source: Bloomberg, IRESS, OML.

Fig.35: International LICs



Source: Bloomberg, IRESS, OML.

LIC Basics

What is a LIC?

- A LIC has characteristics of managed funds and stock exchange-listed companies.
- A LIC is a company that invests in other companies, with the purpose of giving its shareholders exposure to a variety of shares via its investment portfolio.
- LICs may also invest in cash or fixed income instruments, although in many cases this forms only a relatively small proportion of their investment portfolio.
- Income from LICs usually takes the form of semi-annual dividend payments that are linked to the profitability of the portfolio. Capital gains (losses) can arise where the investor sells the shares in the LIC for more (less) than they originally bought them for.

Benefits of investing in LICs

Diversification

- Investment in just one LIC potentially gives an investor exposure to a number of companies in a range of industries.
- This diversification can reduce the volatility of returns across the portfolio.
- A LIC can be a cost-effective method of achieving diversification.

LICs are managed by investment professionals

- Each LIC is managed by full-time investment professionals whose goal it is to optimise returns on the investment portfolio for shareholders within strictly enforced risk parameters.
- In this respect, LICs are passive investments. Once the shares in the LIC have been purchased, the investor leaves investment decisions to the LIC manager.
- Some LICs have operated for more than 50 years while others, although only recently listed, are operated and managed by investment firms that have built strong reputations over many years.

Transparent investment philosophy

- LICs are typically transparent about their investment philosophy and process. Investors can choose the relevant LIC based on their own investment goals and risk preferences.
- Some LICs focus on specific geographic areas (such as Australia or overseas), may invest in a range of industries or focus on just one (such as resources), or are geared towards providing investors with annual income streams or longer-term capital gains (or a combination of both).
- In this document, we briefly describe each of the 64 selected LICs, their main investments and recent performance.

Ease of investment

- Investing in a LIC is done in the same manner as any other company on the ASX, by placing an order with your adviser to buy shares in it.
- Exiting the investment is just as straightforward: the investor sells the shares on-market during trading hours through their adviser.
- Most LICs are 'liquid', meaning there are enough willing buyers and sellers on the ASX, to allow the investor to enter or exit the investment at a time they choose.

Costs involved in investing in a LIC

Entry costs

- Investing in the ASX via a LIC can be cost-effective relative to other methods of investing in a 'portfolio' of investments.
- The initial cost comes in the form of brokerage paid to acquire the shares, which can deliver an efficient method of diversification.
- The entry costs to LIC investments are generally lower than retail managed funds, which utilise a "front-end load" charge at the date of purchase.

Ongoing costs

- LIC managers can charge two types of fees: management and performance fees.
- LICs use management fees to cover the costs incurred in running the portfolio. These fees are taken out of the profits of the LIC, which are a function of the performance of the underlying investment portfolio (including dividends paid and capital gains/losses on shares that are sold). Managers are paid regardless of the profitability of the investment portfolio.
- These fees typically range from 0.0%-2.0% of assets under management per year. This can be lower than the average fees charged for retail managed funds. The effect of this cost-saving on a longer-term investment, where returns compound over many years, can be material. One reason for this lower cost is that LICs do not incur back-office or distribution costs, reducing their cost of operation. The fees (calculated as a “management expense ratio” or MER) of our selected LICs are shown in Table 2.
- Unlike management fees, performance fees are paid only if the LIC’s investment portfolio outperforms a predetermined benchmark. The fee is charged on the size of this outperformance. Not all LICs charge performance fees.
- These fees provide an incentive for the LIC manager to optimise returns for shareholders. Note performance fees in some instances can still be paid when a portfolio incurs a loss over an investment period if it still outperforms its relevant benchmark.
- Performance fees for our selected LICs are shown in Table 2 on page 7. The benchmark index is the S&P/ASX All Ordinaries Accumulation Index unless otherwise stated below.

Exit costs

- Brokerage is payable when selling shares in a LIC. Retail managed funds on the other hand, can generally be exited at no charge.
- Exiting a LIC investment can have tax consequences based on the capital gain or loss over the investment period.

What income do investors receive from a LIC?

- Annual investor income from a “buy-and-hold” investment strategy in a LIC takes the form of dividends, just like other share investments.
- However, because LICs utilise a company structure, payment of dividends is at the discretion of the LIC manager. In other words, just because the investment portfolio of the LIC has made a profit in a given year, it does not mean that all, or even any, of that profit will be paid to shareholders in that year. Where a LIC chooses not to pay a dividend, the income is retained and invested by the LIC and forms part of the LIC’s underlying asset backing. This is different to retail managed funds, which are required to pay out the income to unitholders in the particular tax year that it is earned. Generally, LICs will pay out a high proportion of earnings as dividends.
- A number of our selected LICs invest in blue chip stocks and pay out a high proportion of earnings as a dividend. Accordingly, they can have attractive dividend yields (as shown in Figure 1).

Taxation issues

- LIC returns are generally taxed at the company tax rate of 30%. Accordingly, when dividends are paid to shareholders of the LIC franking credits are attached. These can be a tax benefit for shareholders, as they receive a “credit” for the company tax already paid on the LIC income when the shareholder’s ordinary income is assessed.
- Capital gains are managed by the LIC manager. Where the dividend paid to a shareholder of a LIC contains capital gains, it will be treated as a capital gain, not ordinary income, in the hands of the shareholder.
- This tax treatment contrasts with that of unlisted retail managed funds, where investors incur an annual tax liability on interest and capital gains that the fund earns each year.

LIC Discounts and Premiums

- The price at which investors buy or sell LICs, as with stocks is ultimately determined by supply and demand in the market. As a result, the price of a listed investment company can trade above or below its net tangible asset (NTA) value. That is, trade at a premium or discount, respectively.
- LICs may trade at a discount if:
 - The underlying fund has a poor performance track record.
 - The LIC has yet to pay dividends, has recently reduced its dividend or the market anticipates it has limited ability to pay future dividends.
 - The LIC has a limited track record, rapport with investors or has limited marketing and/or distribution capability.
 - The LIC has issued options which could substantially dilute the NTA of other unit holders if exercised.
 - The LIC has less liquidity.
 - LICs may trade at a discount to pre-tax NTAs if the LIC has a significant tax liability.
- LICs may also trade at a premium if:
 - The underlying portfolio has a strong performance track record.
 - The fund has a history of maintaining or increasing dividends. Many LIC investors have historically preferred vehicles paying stable fully franked dividends.
 - If an LIC has a substantial franking credit balance or tax asset.
- Many LICs have exhibited a tendency for discounts and premiums to mean revert and trade around a certain level. This tendency has provided an opportunity for investors to profit from mean reversion for LICs trading at a discount. However, this reversion can take time and rely on certain catalysts. We also note that a discount can deepen before it narrows.
- Some listed investment companies which trade at a premium may continue to trade at premium for the foreseeable future, or trade at an even larger premium.

LICs versus managed funds

- LICs are listed on the stock exchange, so entry and exit costs are limited to brokerage. This means that diversification may be achieved at a relatively lower cost. LICs also offer a tax-effective structure, whereby dividends are typically fully franked and when LIC capital gains are paid out as dividends, investors may be entitled to an income tax reduction for the proportion of the dividend attributable to the capital gain. Investors in managed funds may incur a tax liability on interest and capital gains.
- The fee structures of LICs can be favourable in comparison with managed funds. Our selected traditional LICs have management expense ratios ranging from 0.0% to 2.5%, whereas managed funds often charge more than 1.0%.

LICs versus exchange traded funds (ETFs)

- LICs and ETFs have low management fees and efficient tax structures compared with managed funds. However, ETFs have an open-ended structure, where units on offer can increase or decrease based on supply and demand. This mechanism allows ETFs to trade at or close to their net asset value.
- ETFs are generally passive investment products and hence do not aim to outperform the market in the same way many of the LICs do. There are an increasing number of Exchange Traded Managed Funds though that offer active management and avoid variation from NTA.
- ETFs are required to distribute any surplus income to security holders, whereas LICs can conserve surplus income and take advantage of market opportunities as they see fit. This added flexibility is beneficial to the shareholder.



Ord Minnett Offices

Adelaide

Level 5
100 Pirie Street
Adelaide SA 5000
Tel: (08) 8203 2500

Brisbane

Level 34
71 Eagle Street
Brisbane QLD 4000
Tel: (07) 3214 5555

Buderim (Sunshine Coast)

1/99 Burnett Street
Buderim QLD 4556
Tel: (07) 5430 4444

Canberra

101 Northbourne Avenue
Canberra ACT 2600
Tel: (02) 6206 1700

Geelong

Office 3, Suite 4
200 Malop Street
Geelong VIC 3220
Tel: (03) 4210 0200

Gold Coast

Level 7
50 Appel Street
Surfers Paradise QLD 4217
Tel: (07) 5557 3333

Hobart

Ground Floor
85 Macquarie Street
Hobart TAS 7000
Tel: (03) 6161 9300

Mackay

45 Gordon Street
Mackay QLD 4740
Tel: (07) 4969 4888

Mildura

128 Lime Avenue
Mildura VIC 3500
Tel: (03) 9608 4111

Melbourne

Level 22
35 Collins Street
Melbourne VIC 3000
Tel: (03) 9608 4111

Newcastle

426 King Street
Newcastle NSW 2300
Tel: (02) 4910 2400

Perth

Level 27
108 St Georges Terrace
Perth WA 6000
Tel: (02) 4910 2400

Head Office

Sydney
Level 18, Grosvenor Place
225 George Street
Sydney NSW 2000
Tel: (02) 8216 6300
www.ords.com.au

International

Hong Kong

1801 Ruttonjee House
11 Duddell Street
Central, Hong Kong
Tel: +852 2912 8980
www.ords.com.hk

Guide to Ord Minnett Recommendations

Our recommendations are based on the total return of a stock – nominal dividend yield plus capital appreciation – and have a 12-month time horizon.

SPECULATIVE BUY	We expect the stock's total return (nominal yield plus capital appreciation) to exceed 20% over 12 months. The investment may have a strong capital appreciation but also has high degree of risk and there is a significant risk of capital loss.
BUY	The stock's total return (nominal dividend yield plus capital appreciation) is expected to exceed 15% over the next 12 months.
ACCUMULATE	We expect a total return of between 5% and 15%. Investors should consider adding to holdings or taking a position in the stock on share price weakness.
HOLD	We expect the stock to return between 0% and 5%, and believe the stock is fairly priced.
LIGHTEN	We expect the stock's return to be between 0% and negative 15%. Investors should consider decreasing their holdings.
SELL	We expect the total return to lose 15% or more.
RISK ASSESSMENT	Classified as Lower, Medium or Higher, the risk assessment denotes the relative assessment of an individual stock's risk based on an appraisal of its disclosed financial information, historical volatility of its share price, nature of its operations and other relevant quantitative and qualitative criteria. Risk is assessed by comparison with other Australian stocks, not across other asset classes such as Cash or Fixed Interest.

Disclosure: Ord Minnett acted as Joint Lead Manager in a capital raising PM Capital Global Opportunities Fund Limited (PGF) in July 2024 and received fees for acting in these capacities. Ord Minnett may do business with and receive commission and/or fees from companies that are the subject of this report. Hugh Glasson holds units in LSF and BTI.

Disclosure: Ord Minnett is the trading brand of Ord Minnett Limited ABN 86 002 733 048, holder of AFS Licence Number 237121 and is an ASX Group Participant, a Participant of Cboe Australia Pty Ltd and a wholly owned subsidiary of Ord Minnett Holdings Pty Limited ABN 32 062 323 728. Ord Minnett Limited and/or its associated entities, directors and/or its employees may have a material interest in, and may earn brokerage from, any securities referred to in this document. This document is not available for distribution outside Australia, New Zealand and Hong Kong and may not be passed on to any third party or person without the prior written consent of Ord Minnett Limited. Further, Ord Minnett and/or its affiliated companies may have acted as manager or co-manager of a public offering of any such securities in the past three years. Ord Minnett and/or its affiliated companies may provide or may have provided corporate finance to the companies referred to in the report.

Ord Minnett and associated persons (including persons from whom information in this report is sourced) may do business or seek to do business with companies covered in its research reports. As a result, investors should be aware that the firm or other such persons may have a conflict of interest that could affect the objectivity of this report. Investors should consider this report as only a single factor in making their investment decision.

This document is current as at the date of the issue but may be superseded by future publications. You can confirm the currency of this document by checking Ord Minnett's internet site.

Disclaimer: Ord Minnett Limited believes that the information contained in this document has been obtained from sources that are accurate, but has not checked or verified this information. Except to the extent that liability cannot be excluded, Ord Minnett Limited and its associated entities accept no liability for any loss or damage caused by any error in, or omission from, this document. This document is intended to provide general securities advice only, and has been prepared without taking account of your objectives, financial situation or needs, and therefore before acting on advice contained in this document, you should consider its appropriateness having regard to your objectives, financial situation and needs. If any advice in this document relates to the acquisition or possible acquisition of a particular financial product, you should obtain a copy of and consider the Product Disclosure Statement for that product before making any decision. Investments can go up and down. Past performance is not necessarily indicative of future performance.

Analyst Certification: The analyst certifies that: (1) all of the views expressed in this research accurately reflect their personal views about any and all of the subject securities or issuers; (2) no part of their compensation was, is, or will be directly or indirectly related to the specific recommendations or views expressed herein.

Ord Minnett Hong Kong: This document is issued in Hong Kong by Ord Minnett Hong Kong Limited, CR Number 1792608, which is licensed by the Securities and Futures Commission (CE number BAI183) for Dealing in Securities (Type 1 Regulated Activity) and Advising on Securities (Type 4 Regulated Activity) and Asset Management (Type 9 Regulated Activity) in Hong Kong. Ord Minnett Hong Kong Limited believes that the information contained in this document has been obtained from sources that are accurate, but has not checked or verified this information. Except to the extent that liability cannot be excluded, Ord Minnett Hong Kong Limited and its associated entities accept no liability for any loss or damage caused by any error in, or omission from, this document. This document is provided for information purposes only and does not constitute an offer to sell (or solicitation of an offer to purchase) the securities mentioned or to participate in any particular trading strategy. The investments described have not been, and will not be, authorized by the Hong Kong Securities and Futures Commission.

Note: Through various investment entities, Bruce Mathieson beneficially holds a major shareholding in the Ord Minnett group as well as substantial shareholdings in Endeavour Group and Star Entertainment.

For information regarding Ord Minnett Research's coverage criteria, methodology and spread of ratings, please visit <http://www.ords.com.au/methodology/>
For information regarding any potential conflicts of interest and analyst holdings, please visit <http://www.ords.com.au/methodology/>

The analyst has certified that they were not in receipt of inside information when preparing this report, whether or not it contains company recommendations. Any reports in this publication have been authorised for distribution by Simon Kent-Jones, Head of Private Wealth Research at Ord Minnett.