

October 2024 performance review and sector update

Conviction ideas: Our preferences within each sector are based on numerous quantitative and qualitative factors. Table 1 on page 2 provides a sector update, with our estimated current net tangible assets (NTAs) derived from our model portfolios.

Traditional LICs

The ASX 200 Accum. Index took a breather in October, retracing 1.3% after five consecutive months in the positive. Traditional LICs fared better than the market from a Total Shareholder Return (TSR) perspective, falling an average of 1.1%, although underperformed on a pre-tax net tangible asset (NTA) basis, declining 1.8% on average.

Preferred LIC **Australian United Investment Company (AUI)** trailed the benchmark, falling 1.8% on an NTA basis during October, but remains our pick for those seeking a Traditional LIC trading at a discount. The fund currently trades at an estimated 11.7% discount, below its 1- and 3-year average discounts of 11.6% and 8.2%. The gross yield sits at 5.9% on a trailing basis.

Our second preference remains **BKI Investment Company (BKI)** given its attractive yield and discount to NTA. BKI is currently trading at a 7.8% discount and is well below its longer-term averages, and offers a trailing gross yield of 6.6%.

Large Capitalisation

L1 Long Short Fund (LSF) outperformed by 0.7% on a pre-tax NTA basis in October. LSF has traded at or around its NTA in recent months and is currently trading at a modest 2.5% premium. However, given longer-term performance remains strong, outpacing peers in our large cap universe, we retain LSF as our preferred large cap LIC.

AMCIL (AMH), our second preference, saw its share price rise 2.2% during the month despite underperforming on an NTA basis. We still view AMH as attractive given its longer-term performance and its current discount to NTA. It is trading at an estimated 9.2% discount, significantly below its 3- and 5-year average discounts of 5.9% and 6.0%.

Small Capitalisation & Specialist

After a strong gain in September, the Small Ords Accum. Index moved 0.8% higher in October and outperformed the broader market. Key pick, **Spheria Emerging Companies (SEC)**, outperformed its benchmark, adding 1.0% on an NTA basis. SEC's discount has narrowed to an estimated 4.2% and currently offers a trailing gross yield of 7.9%. We provide an update on SEC's conditional proposal on *Page 2*.

Contents

Around The Grounds: LIC News	2
Sector Snapshot	4
Performance Table (October-24)	6
Top Picks (by Segment)	
Australian United Investment Co. (AUI)	7
BKI Investment Company (BKI)	8
L1 Long Short Fund (LSF)	9
AMCIL (AMH)	10
Spheria Emerging Companies (SEC)	11
Regal Investment Fund (RF1)	12
PM Capital Global Opportunities (PGF)	13
MFF Capital Investments (MFF)	14
Appendix	
Historical Prem/Disc for Pref. LICs	15
Net tangible asset (NTA) growth	17
Total shareholder return (TSR) growth	18
Dividend yield, pre & post tax-NTA	19
Return volatility	20
LIC basics	22

Hugh Glasson

Research Associate
(02) 8216 6513
hglasson@ords.com.au

Disclosure: Ord Minnett acted as Joint Lead Manager in a capital raising PM Capital Global Opportunities Fund Limited (PGF) in July 2024 and Regal Investment Fund (RF1) in November 2024 and received fees for acting in these capacities. Ord Minnett acted as a Joint Lead Arranger and Joint Lead Manager in the IPO of Whitefield Income Limited (WHI) in November 2024. Ord Minnett may do business with and receive commission and/or fees from companies that are the subject of this report. Hugh Glasson holds units in LSF and BTI.

Our specialist preference remains **Regal Investment Fund** (RF1) given the stellar NTA performance over 1-, 3- and 5-year periods. The vehicle provides exposure to various strategies managed by the award-winning Regal Funds Management since being established in 2004.

International

Overseas markets, as measured by the MSCI World Index on a total return AUD adjusted basis, gained 3.6% in October, boosting its year-to-date return to 21.7%.

PM Capital Global Opportunities Fund (PGF) holds its spot as our preferred international LIC. The fund's active performance over the key 3- and 5-year horizons is excellent and well ahead of peers. In our view, the impressive track record and the 6.7% gross trailing yield justifies the modest 5% premium to NTA.

While PGF still remains our preferred pick, we introduce **MFF Capital Investments** (MFF) as a second preference for those looking for international exposure that trades at a discount to NTA. MFF, led by Chris Mackay, co-founder of Magellan, offers investors a portfolio of ~30 international companies with a focus on quality. MFF's performance has been solid, returning 40.7%, 14.5% and 10.6% on a pre-tax NTA basis over 1-, 3- and 5-year time horizons, and is currently trading at an estimated 13% discount.

Around The Grounds: LIC News

Spheria Emerging Companies (SEC)

- On 30 September Spheria provided an update on the conditional proposal it released in January 2024 to address the persistence of the discount of the share price compared to its NTA. Under the proposal, the average of the daily NTA discount, as measured by the daily closing share price relative to the pre-tax NTA on that same day, will be calculated over the current quarter (1 October 2024 to 31 December 2024). If this average is at a greater than 5% discount, SEC intends to pursue avenues available to enable SEC shareholders to exchange their shares for units in the unlisted Spheria Australian Smaller Companies Fund. If the average discount is less than 5%, SEC will remain as a LIC. **We estimate the average daily NTA discount for the quarter to 20 November to be 4.4%.**

Whitefield Income (WHI)

- Whitefield Income Limited** (WHI) has announced it will be undertaking an Initial Public Offering (IPO) and is expecting to list on the ASX on Wednesday 11 December, 2024.
- The LIC will be managed by Whitefield Capital Management, who also manage Australia's oldest listed investment company, Whitefield Industrials (WHF).
- The company's objectives are to:
 - Generate income inclusive of franking credits through an actively managed systematic strategy focused on ASX 300 listed securities over their income recognition and dividend payment periods;
 - Distribute monthly some or all of its available net profit to shareholders as franked dividends with a target return of 8.0% per annum; and
 - Generate total returns including franking credits that are similar to or exceeds the gross return of the S&P/ASX 300 Equal Weighted Franking Credit Adjusted Daily Tax-Exempt Total Return Index over rolling 3-year periods.
- WHI's closest peer is **Plato Income Maximiser** (PL8) which employs a similar equity income strategy and provides distributions on a monthly basis. PL8 is currently at an estimated 9.6% premium to its NTA and has historical traded at an average premium greater than 10%. We have provided a brief comparison below:



	Whitefield Income (WHI)	Plato Income Maximiser (PLB)
Return Objective	Generate income inclusive of franking credits; Generate total returns including franking credits similar to or exceeding the gross return of the benchmark over rolling 3 year periods.	Generate annual income (including franking credits) and outperform (after fees) the benchmark in total return terms including franking credits over the investment cycle (typically 3 to 5 years).
Benchmark	S&P/ASX 300 Equal Weight Franking Credit Adjusted Daily Tax-Exempt Total Return Index	S&P/ASX 200 Franking Credit Adjusted Daily Total Return Index (Tax Exempt)
Income (%)	8% p.a. inclusive of franking ¹	7.6% p.a. inclusive of franking ²
Dividend Frequency	Monthly	Monthly
Management Fee	0.75% p.a. plus GST	0.80% p.a.
Performance Fee	10% (plus GST) of Portfolio return after expenses, including net franking credits in excess of Benchmark return, subject to recoupment of any prior underperformance.	Nil

1. Target objective as per the prospectus. 2. Distributed income since inception (28 April 2017). As at 31 October 2024

Regal Investment Fund (RF1)

- Preferred specialist LIC, **Regal Investment Fund (RF1)**, recently raised ~\$95.3m via placement. In addition to the placement, RF1 will also be raising a further \$30m via a unit purchase plan (UPP), under which eligible unitholders can apply for up to \$30,000 of new units at an issue price of \$3.41.
- The offer price is equal to the estimated net asset value (NAV) per unit on 15 November and represents a discount of 5.3% to RF1's closing price of \$3.60 on 18 November.
- Proceeds raised will be allocated across the fund's existing alternative investment strategies, including long/short equities, private markets, real and natural assets and credit and resources royalties.
- The UPP is scheduled to open on Monday, 25 November and expected to close on Thursday, 12 December. Further details will be provided in the UPP offer booklet, which is expected to be available on Monday, 25 November 2024.
- **Given RF1 is currently trading at a premium to its NAV, we believe the UPP provides an attractive opportunity for investors to acquire additional units. As such, we recommend unitholders consider subscribing for units in the UPP.**
- For more details on RF1, including the funds underlying strategies and performance, refer to *Page 12*.



Table 1: Sector snapshot

Listed Investment Companies coverage by sector

Listed Investment Companies coverage by sector																
Traditional LICs																
	Code	Share Price	Market Cap. (\$m)	Trailing Dividend (cents)	Trailing Dividend Yield	Trailing Grossed Up Yield	TSR since 1 Nov 24	Current Est. NTA	Current Estimated Disc/Prem	Oct NTA	Oct Disc/Prem	1 Yr Ave Disc/Prem	3 Yr Ave Disc/Prem	Oct Post-tax Disc/Prem	MER	
Australian Foundat.	AFI	7.47	9374.7	26.0	3.5%	5.0%	0.4%	8.39	-11.0%	8.17	-9.1%	-6.8%	2.2%	9.3%	0.16%	
Argo Investments	ARG	9.07	6930.4	34.5	3.8%	5.4%	3.2%	10.27	-11.7%	9.88	-11.3%	-7.9%	-1.3%	2.8%	0.16%	
Australian United Invest.	AUI	10.92	1355.1	45.0	4.1%	5.9%	-1.2%	12.37	-11.7%	12.06	-9.0%	-11.6%	-8.2%	10.0%	0.10%	
BKI Investment Ltd	BKI	1.71	1380.2	7.9	4.6%	6.6%	0.0%	1.87*	-7.8%	1.86	-7.8%	-6.0%	-3.1%	-0.2%	0.18%	
Djerriwarrh	DJW	3.14	828.1	15.3	4.9%	6.9%	-0.6%	3.40	-7.5%	3.38	-6.2%	-10.0%	-7.6%	-4.2%	0.45%	
Diversified United	DUI	5.31	1147.1	16.0	3.0%	4.3%	1.7%	6.16	-13.8%	6.03	-13.4%	-12.7%	-8.9%	5.7%	0.12%	
Large Capitalisation																
	Code	Share Price	Market Cap. (\$m)	Trailing Dividend (cents)	Trailing Dividend Yield	Trailing Grossed Up Yield	TSR since 1 Nov 24	Current Est. NTA	Current Estimated Disc/Prem	Oct NTA	Oct Disc/Prem	1 Yr Ave Disc/Prem	3 Yr Ave Disc/Prem	Oct Post-tax Disc/Prem	MER	
AMCIL Limited	AMH	1.18	374.8	4.0	3.4%	4.8%	-0.4%	1.30	-9.2%	1.30	-10.0%	-12.5%	-5.9%	1.7%	0.56%	
Clime Capital	CAM	0.80	120.9	5.4	6.8%	9.6%	-0.6%	0.79*	0.6%	0.79	1.9%	-0.7%	-0.9%	1.9%	1.00%	
Cadence Capital	CDM	0.70	209.9	6.0	8.6%	12.2%	-0.7%	n.a	0.0%	0.81	-13.7%	-13.0%	-9.5%	-29.2%	1.00%	
Carlton Investments	CIN	30.65	810.3	104.0	3.4%	4.8%	2.2%	n.a	n.a	39.91	-24.8%	-24.6%	-22.9%	-10.3%	0.10%	
Future Gen Ltd	FGX	1.24	505.3	6.9	5.5%	7.9%	1.2%	n.a	n.a	1.40	-12.8%	-14.4%	-11.1%	-8.1%	0.00%	
L1 Long Short Fnd Ltd	LSF	3.08	1926.5	11.8	3.8%	5.4%	-2.2%	3.01*	2.5%	3.15	-0.6%	-3.8%	-5.5%	2.6%	1.44%	
Mirrabooka Invest.	MIR	3.37	654.6	13.0	3.9%	5.5%	2.4%	3.36	0.3%	3.29	0.6%	0.8%	3.9%	13.7%	0.50%	
Perpetual Equity Ltd	PIC	1.20	456.3	8.0	6.7%	9.6%	3.0%	1.29*	-7.6%	1.27	-7.2%	-8.1%	-5.5%	-5.1%	1.00%	
Plato Income Max.	PL8	1.23	917.1	6.6	5.4%	7.7%	0.4%	1.13*	9.6%	1.12	9.6%	10.3%	13.2%	9.9%	0.80%	
WAM Leaders Limited	WLE	1.25	1708.0	9.2	7.4%	10.5%	-4.9%	n.a	n.a	1.36	0.5%	-1.3%	2.3%	na	1.00%	
Whitefield Ltd	WHF	5.83	684.4	20.5	3.5%	5.0%	3.7%	6.50	-10.3%	6.22	-9.6%	-8.5%	-2.4%	1.8%	0.25%	
Small Capitalisation																
	Code	Share Price	Market Cap. (\$m)	Trailing Dividend (cents)	Trailing Dividend Yield	Trailing Grossed Up Yield	TSR since 1 Nov 24	Current Est. NTA	Current Estimated Disc/Prem	Oct NTA	Oct Disc/Prem	1 Yr Ave Disc/Prem	3 Yr Ave Disc/Prem	Oct Post-tax Disc/Prem	MER	
Acorn Cap Inv Fund	ACQ	0.85	75.7	5.5	6.5%	8.6%	0.3%	n.a	n.a	1.12	-21.7%	-16.7%	-8.9%	-21.2%	0.95%	
ECP Emerging Growth	ECP	1.45	26.6	5.4	3.7%	5.3%	-2.0%	1.84	-21.2%	1.84	-19.6%	-24.6%	-20.4%	-15.5%	1.00%	
Naos Small Cap Opp	NSC	0.45	60.0	5.0	11.2%	16.1%	-3.8%	n.a	n.a	0.57	-17.5%	-15.2%	-16.3%	-21.7%	1.15%	
Glennon SML Co Ltd	GC1	0.48	23.1	3.0	6.3%	7.1%	1.1%	n.a	n.a	0.76	-34.9%	-31.4%	-24.3%	-32.4%	1.00%	
Naos Emerg Opp	NCC	0.37	27.3	5.8	15.5%	20.0%	-3.9%	n.a	n.a	0.48	-19.8%	-10.4%	-12.0%	-26.4%	1.25%	
NGE Capital	NGE	1.14	40.5	0.0	0.0%	0.0%	-0.4%	n.a	n.a	1.33	-14.2%	-16.7%	-19.6%	-19.4%	1.90%	
Ophir High Conviction	OPH	2.93	652.2	7.5	2.6%	2.6%	8.1%	3.25*	-12.1%	3.18	-14.5%	-12.3%	-5.5%	na	1.23%	
Ryder Capital	RYD	1.32	107.3	9.0	6.8%	9.8%	2.7%	n.a	n.a	1.58	-19.2%	-16.4%	-13.6%	-16.4%	1.25%	
Salter Brothers Emerging	SB2	0.73	64.0	0.0	0.0%	0.0%	2.1%	n.a	n.a	1.07	-33.9%	-36.0%	-31.7%	-33.7%	1.25%	
Spheria Emerging Co	SEC	2.32	138.7	12.8	5.5%	7.9%	-0.9%	2.38*	-4.2%	2.40	-2.7%	-6.7%	-9.4%	-0.4%	1.00%	
WAM Capital Limited	WAM	1.50	1674.1	15.5	10.4%	13.0%	1.2%	n.a	n.a	1.52	-2.4%	1.4%	12.3%	na	1.00%	
WAM Research Ltd	WAX	1.12	229.2	10.0	9.0%	11.3%	-0.4%	n.a	n.a	1.07	4.0%	7.8%	25.8%	na	1.00%	
WAM Microcap Ltd	WMI	1.44	400.3	10.5	7.3%	10.4%	-2.7%	n.a	n.a	1.41	5.2%	6.6%	13.1%	na	1.00%	

Source: Company releases, Bloomberg, IRESS, OML estimates

Figures as at: 20 November 2024

*NTA is last reported NTA, adjusted for any dividends past ex-date. Current premium and discount is based on the discount at date of last disclosed NTA date.



Table 1: Sector snapshot (cont.)

Listed Investment Companies coverage by sector

Listed Investment Companies coverage by sector															
International															
	Code	Share Price	Market Cap. (\$m)	Trailing Dividend (cents)	Trailing Dividend Yield	Trailing Grossed Up Yield	TSR since 1 Nov 24	Current Est. NTA	Current Estimated Disc/Prem	Oct NTA	Oct Disc/Prem	1 Yr Ave Disc/Prem	3 Yr Ave Disc/Prem	Oct Post-tax Disc/Prem	MER
Argo Global Ltd	ALI	2.30	408.9	0.0	0.0%	0.0%	0.4%	2.65*	-12.5%	2.61	-11.9%	-12.6%	-6.6%	-9.4%	1.25%
Future Glb Invest Co	FGG	1.39	552.6	7.3	5.3%	7.5%	1.5%	n.a	n.a	1.57	-13.0%	-16.3%	-14.9%	-6.8%	0.00%
Global Value Fnd Ltd	GVF	1.32	230.0	7.6	5.8%	8.3%	0.4%	n.a	n.a	1.33	-2.6%	-6.8%	-5.4%	6.2%	1.50%
Pengana International	PIA	1.15	295.7	5.4	4.7%	6.7%	0.0%	1.35*	-13.3%	1.34	-13.9%	-15.5%	-14.1%	-12.5%	1.23%
MFF Capital Invest.	MFF	4.20	2446.5	13.0	3.1%	4.4%	6.3%	4.83*	-12.2%	4.55	-13.0%	-14.2%	-15.9%	5.0%	0.55%
Platinum Asia Ltd	PAI	1.00	368.2	2.5	2.5%	3.6%	-5.7%	1.09*	-8.2%	1.13	-6.8%	-10.9%	-12.5%	-4.6%	1.10%
PM Capital Fund	PGF	2.26	1080.0	10.5	4.7%	6.7%	-3.0%	2.19*	5.5%	2.16	8.2%	3.0%	0.3%	22.1%	1.00%
Platinum Capital Ltd	PMC	1.36	402.7	6.0	4.4%	6.3%	-4.9%	1.49*	-6.5%	1.54	-6.6%	-10.9%	-12.9%	-4.5%	1.10%
Regal Asian Investments	RG8	2.17	336.7	10.0	4.6%	6.6%	-4.8%	2.32*	-1.7%	2.49	-8.4%	-13.2%	-14.8%	0.0%	1.50%
WAM Global	WGB	2.22	788.7	12.0	5.4%	7.7%	0.9%	n.a	n.a	2.55	-11.5%	-11.5%	-12.2%	na	1.25%
VGI Partners Global	VG1	1.96	518.6	10.0	5.1%	7.3%	-4.9%	2.06*	-6.1%	2.15	-5.1%	-11.6%	-15.1%	na	1.50%
Specialist															
	Code	Share Price	Market Cap. (\$m)	Trailing Dividend (cents)	Trailing Dividend Yield	Trailing Grossed Up Yield	TSR since 1 Nov 24	Current Est. NTA	Current Estimated Disc/Prem	Oct NTA	Oct Disc/Prem	1 Yr Ave Disc/Prem	3 Yr Ave Disc/Prem	Oct Post-tax Disc/Prem	MER
Bailador Tech Inv	BTI	1.25	184.4	6.9	5.5%	7.9%	2.0%	n.a	n.a	1.83	-31.7%	-30.0%	-28.0%	-24.2%	1.75%
Hearts and Minds	HM1	3.04	696.1	14.5	4.8%	6.8%	3.4%	3.41*	-10.0%	3.35	-11.6%	-16.0%	-15.1%	-7.8%	0.00%
Lowell Resource Fund	LRT	1.14	45.3	15.2	13.3%	13.4%	2.7%	1.32*	-13.0%	1.41	-21.4%	-12.2%	-12.7%	na	2.16%
Lion Selection Grp	LSX	0.55	76.9	0.0	0.0%	0.0%	-6.8%	n.a	n.a	0.75	-22.4%	-29.1%	-29.2%	-20.1%	1.50%
NAOS ex-50 Opport.	NAC	0.43	20.8	6.0	14.0%	19.9%	-6.2%	n.a	n.a	0.47	4.3%	1.3%	-7.6%	-18.3%	1.75%
Regal Investment Fund	RF1	3.60	670.7	22.1	6.1%	6.1%	-1.4%	3.41*	5.6%	3.52	3.7%	-4.4%	-2.2%	na	1.50%
Sandon Capital Ltd	SNC	0.78	111.7	5.5	7.1%	10.1%	1.3%	n.a	n.a	0.94	-18.0%	-14.3%	-13.8%	-14.4%	1.25%
Tribeca Glb Resources	TGF	1.49	117.4	0.0	0.0%	0.0%	-10.5%	1.91*	-0.22	2.05	-18.6%	-19.5%	-17.6%	-21.2%	1.50%
Thorney Technologies Ltd	TEK	0.15	57.7	0.0	0.0%	0.0%	1.7%	n.a	n.a	0.25	-40.8%	-40.2%	-33.9%	-46.2%	1.00%
Thorney Opp Ltd	TOP	0.67	120.4	2.6	3.8%	5.5%	0.0%	n.a	n.a	0.95	-32.0%	-32.0%	-29.6%	-24.9%	0.75%
WAM Active Ltd	WAA	0.86	65.3	6.0	7.0%	10.0%	-3.5%	n.a	n.a	0.83	3.4%	1.1%	4.2%	na	1.00%
WAM Strategic Value Ltd	WAR	1.14	205.3	5.3	4.6%	6.6%	-0.9%	n.a	n.a	1.27	-8.6%	-12.4%	-11.6%	na	1.00%
WAM Alternative Assets	WMA	1.02	200.1	5.2	5.1%	7.3%	-0.4%	n.a	n.a	1.19	-14.5%	-15.8%	-14.2%	na	1.20%

Source: Company releases, Bloomberg, IRESS, OML estimates

Figures as at: 20 November 2024

*NTA is last reported NTA, adjusted for any dividends past ex-date. Current premium and discount is based on the discount at date of last disclosed NTA date.

NTA performance calculation methodology

- Unless stated otherwise, NTA performance in this report is calculated on pre-tax NTA basis, which refers to net tangible assets after tax paid but before tax on unrealised gains as well as cash dividends paid during the relevant period. TSR performance figures from Bloomberg and calculated with re-invested dividends. Active return refers to the TSR relative to that of the comparative index.
- LIC performance measurements reflect performance after all operating expenses and taxation. Using index benchmarks often understates performance as the indices used are before all operating expenses and tax. Total shareholder returns are often negatively impacted by capital events such as options, DRPs, share purchase plans and placements. Dividend yields contained within are historical and are not an indication of future dividend payments.



Fig. 1: LIC Performance Table (October 2024)

Traditional LICs	Code	1 Year			3 Year (annualised)			5 Year (annualised)		
		NTA performance	TSR Performance	Avg. Prem/Disc	NTA performance	TSR Performance	Avg. Prem/Disc	NTA performance	TSR Performance	Avg. Prem/Disc
Australian Foundat.	AFI	26.3%	17.4%	-6.8%	6.4%	0.0%	2.2%	8.3%	6.0%	4.0%
Argo Investments	ARG	20.6%	9.4%	-7.9%	6.2%	0.9%	-1.3%	7.0%	4.6%	0.1%
Australian United In	AUI	25.7%	23.1%	-11.6%	9.2%	7.1%	-8.2%	7.9%	6.9%	-6.5%
BKI Investment Ltd	BKI	16.2%	6.7%	-6.0%	8.3%	6.4%	-3.1%	6.8%	5.1%	-3.2%
Djerriwarrh	DJW	21.1%	22.4%	-10.0%	4.5%	3.8%	-7.6%	5.0%	2.3%	-5.5%
Diversified United	DUI	24.4%	17.0%	-12.7%	7.2%	3.3%	-8.9%	7.4%	5.3%	-6.7%

Large Capitalisation	Code	1 Year			3 Year (annualised)			5 Year (annualised)		
		NTA Performance	TSR Performance	Avg. Prem/Disc	NTA Performance	TSR Performance	Avg. Prem/Disc	NTA Performance	TSR Performance	Avg. Prem/Disc
AMCIL Limited	AMH	32.7%	31.1%	-12.5%	3.6%	1.4%	-5.9%	9.3%	8.7%	-6.0%
Clime Capital	CAM	8.9%	10.9%	-0.7%	0.3%	1.5%	-0.9%	2.0%	3.5%	-1.6%
Cadence Capital	CDM	10.0%	8.3%	-13.0%	-6.3%	-5.6%	-9.5%	5.3%	6.1%	-10.9%
Carlton Investments	CIN	17.8%	15.0%	-24.6%	0.7%	0.5%	-22.9%	4.1%	2.2%	-21.2%
Future Gen Ltd	FGX	22.7%	17.8%	-14.4%	2.3%	1.0%	-11.1%	7.1%	6.9%	-10.4%
L1 Long Short Fund	LSF	14.2%	18.4%	-3.8%	3.8%	7.5%	-5.5%	14.5%	17.3%	-10.1%
Mirrabooka Invest.	MIR	30.3%	21.2%	0.8%	1.1%	-2.0%	3.9%	10.3%	8.9%	3.3%
Perpetual Equity Ltd	PIC	15.3%	15.7%	-8.1%	2.2%	2.4%	-5.5%	8.7%	8.9%	-6.5%
Plato Inc Max Ltd.	PL8	21.4%	11.0%	10.3%	6.5%	3.9%	13.2%	6.5%	6.3%	11.7%
WAM Leaders Limited	WLE	13.7%	3.8%	-1.3%	3.5%	2.0%	2.3%	7.5%	8.6%	1.7%
Whitefield Ltd	WHF	34.1%	12.7%	-8.5%	6.4%	2.9%	-2.4%	7.0%	5.9%	-1.1%

Small Capitalisation	Code	1 Year			3 Year (annualised)			5 Year (annualised)		
		NTA Performance	TSR Performance	Avg. Prem/Disc	NTA Performance	TSR Performance	Avg. Prem/Disc	NTA Performance	TSR Performance	Avg. Prem/Disc
Acorn Cap Inv Fund	ACQ	13.1%	-5.1%	-16.7%	-6.2%	-13.4%	-8.9%	3.7%	2.2%	-8.5%
ECP Emerging Co	ECP	45.6%	39.8%	-24.6%	2.2%	1.7%	-20.4%	10.3%	13.4%	-19.6%
Naos Smlcap Com Ltd	NSC	-17.8%	-23.6%	-15.2%	-15.0%	-14.2%	-16.3%	-3.4%	-2.2%	-18.0%
Glennon SML Co Ltd	GC1	23.6%	13.3%	-31.4%	-8.0%	-11.9%	-24.3%	-0.6%	-6.4%	-22.9%
Naos Emerg Opp	NCC	-30.2%	-34.3%	-10.4%	-20.0%	-22.2%	-12.0%	-7.9%	-11.2%	-10.6%
NGE Capital Limited	NGE	26.7%	39.5%	-16.7%	13.2%	14.6%	-19.6%	11.2%	13.8%	-21.7%
Ophir High Cf	OPH	32.1%	25.4%	-12.3%	0.5%	-7.5%	-5.5%	8.5%	6.5%	-2.8%
Ryder Capital Ltd	RYD	51.7%	44.2%	-16.4%	-0.6%	-1.6%	-13.6%	4.1%	1.9%	-12.9%
Salter Brothers	SB2	31.7%	35.5%	-36.0%	-3.1%	-3.7%	-31.7%	na	na	na
Spheria Emerging Co	SEC	33.9%	37.8%	-6.7%	0.5%	1.5%	-9.4%	7.6%	11.9%	-11.7%
WAM Capital Limited	WAM	31.9%	11.9%	1.4%	3.6%	-5.2%	12.3%	6.0%	0.5%	15.8%
WAM Research Ltd	WAX	42.3%	20.0%	7.8%	6.2%	-5.7%	25.8%	7.8%	2.6%	29.5%
WAM Microcap Limited	WMI	30.3%	17.7%	6.6%	0.5%	-3.9%	13.1%	7.3%	7.9%	11.0%

International	Code	1 Year			3 Year (annualised)			5 Year (annualised)		
		NTA Performance	TSR Performance	Avg. Prem/Disc	NTA Performance	TSR Performance	Avg. Prem/Disc	NTA Performance	TSR Performance	Avg. Prem/Disc
Argo Global Ltd	ALI	18.1%	22.2%	-12.6%	3.4%	2.9%	-6.6%	0.2%	2.9%	-6.5%
Future Glb Invest Co	FGG	21.7%	28.7%	-16.3%	1.0%	1.0%	-14.9%	5.9%	5.6%	-14.8%
Global Value Fnd Ltd	GVF	16.3%	23.0%	-6.8%	8.7%	8.9%	-5.4%	10.5%	10.7%	-4.8%
Pengana Int Equ Ltd	PIA	15.6%	21.3%	-15.5%	0.4%	-1.9%	-14.1%	5.8%	6.0%	-13.0%
MFF Capital Inv Ltd	MFF	40.7%	50.6%	-14.2%	14.5%	15.2%	-15.9%	10.6%	7.4%	-12.6%
Platinum Asia Ltd	PAI	20.3%	28.5%	-10.9%	2.2%	3.4%	-12.5%	5.6%	6.7%	-11.1%
Pm Capital Fund	PGF	35.4%	45.3%	3.0%	14.3%	20.0%	0.3%	15.2%	21.5%	-5.8%
Platinum Capital Ltd	PMC	7.8%	17.6%	-10.9%	3.8%	5.1%	-12.9%	3.6%	2.9%	-11.2%
Regal Asian Investments	RG8	19.2%	26.2%	-13.2%	3.1%	7.3%	-14.8%	na	1.7%	-15.4%
WAM Global	WGB	22.0%	27.4%	-11.5%	3.2%	0.9%	-12.2%	6.3%	5.9%	-10.7%
VGI Partners Global	VG1	17.4%	36.3%	-11.6%	0.7%	4.0%	-15.1%	1.4%	2.2%	-14.5%

Specialist	Code	1 Year			3 Year (annualised)			5 Year (annualised)		
		NTA Performance	TSR Performance	Avg. Prem/Disc	NTA Performance	TSR Performance	Avg. Prem/Disc	NTA Performance	TSR Performance	Avg. Prem/Disc
Bailador Tech Inv	BTI	15.4%	15.2%	-30.0%	8.6%	-7.3%	-28.0%	12.5%	8.8%	-24.0%
Hearts and Minds	HM1	32.2%	45.8%	-16.0%	-1.4%	-5.7%	-15.1%	6.6%	3.7%	-8.1%
Lowell Res Fund	LRT	-0.3%	-11.4%	-12.2%	-3.1%	-6.8%	-12.7%	24.9%	26.5%	-14.4%
Lion Selection Grp	LSX	21.4%	42.5%	-29.1%	12.3%	13.0%	-29.2%	14.3%	12.1%	-27.0%
Naos Ex-50	NAC	-41.9%	-41.6%	1.3%	-29.5%	-20.9%	-7.6%	-11.8%	-6.2%	-13.3%
Regal Invest Fund	RF1	27.0%*	48.1%*	-4.4%	5.5%	6.6%	-2.2%	19.6%	20.0%	-1.4%
Sandon Capital Ltd	SNC	35.0%	30.1%	-14.3%	0.3%	-0.6%	-13.8%	6.2%	6.3%	-14.6%
Tribeca Glb Resources	TGF	5.9%	8.1%	-19.5%	-8.2%	-9.7%	-17.6%	-0.8%	-0.8%	-18.3%
Thorney Technologies Ltd	TEK	11.7%	13.4%	-40.2%	-21.7%	-31.3%	-33.9%	na	-11.3%	na
Thorney Opp Ltd	TOP	40.2%	54.4%	-32.0%	11.5%	9.0%	-29.6%	5.2%	3.6%	-26.4%
WAM Active Ltd	WAA	30.2%	35.5%	1.1%	1.1%	0.5%	4.2%	2.9%	2.3%	4.4%
WAM Strategic Value Ltd	WAR	15.9%	21.4%	-12.4%	2.2%	1.8%	-11.6%	na	na	na
WAM Alternative Assets	WMA	5.6%	-5.2%	-15.8%	4.3%	4.0%	-14.2%	4.9%	9.2%	-16.0%

Source: Bloomberg, IRESS, OML

Australian United Investment Company (AUI)

www.aui.com.au

- AUI was founded in 1953 by the late Sir Ian Potter and The Ian Potter Foundation.
- AUI utilises a “traditional” investment philosophy, focusing on risk reduction by investing in a range of large and mid-cap companies on the ASX.
- Investments are chosen on their individual merits, with no pre-determined policy that any particular proportion of the capital will be invested in particular investment sectors.
- The total shareholder return for the year ending 31 October 2024 was 23.1%, with pre-tax NTA increasing 25.7%. The active return (TSR) was -1.7%.

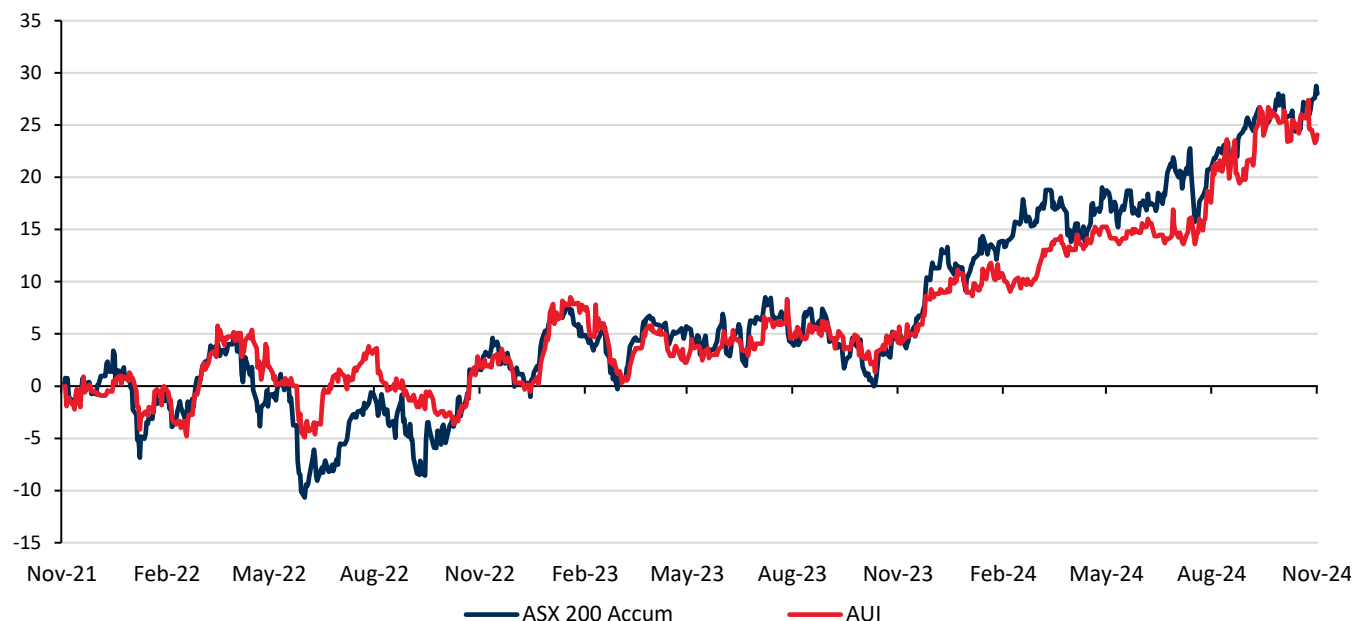
Fig. 1: AUI Snapshot

AUI Snapshot				Top Holdings			
Price (31 October 2024)			\$10.97	Commonwealth Bank.			10.7%
Share price range (12 months)			\$9.55- \$11.20	BHP Group Limited			7.5%
Shares on issue (Mn)			124.1	CSL Limited			7.5%
Market capitalisation (\$Mn)			\$1,361	RIO Tinto Limited			5.8%
Pre-tax asset backing*			\$12.06	Wesfarmers Limited			5.7%
Post-tax asset backing*			\$9.97	Diversified United			4.9%
Premium/(Discount) to pre-tax NTA			-9.0%	ANZ Banking Grp Ltd			4.9%
Premium/(Discount) to post-tax NTA			10.0%	Woodside Energy			4.6%
Dividend yield			4.1%	Transurban Group			4.5%
Dividend per share (cents)			45.0	Westpac Banking Corp			4.2%
Franking			100%				
Management expense ratio			0.10%				

Total Shareholder Return	1 Year	3 Year	5 Year	NTA Performance	1 Year	3 Year	5 Year
AUI	23.1%	7.1%	6.9%	NTA growth	25.7%	9.2%	7.9%
Active return	-1.7%	-0.9%	-1.3%	Active return	0.9%	1.2%	-0.3%

Source: IRESS, Bloomberg, OML, Company reports. Figures as at 31 October 2024. Active returns refers to the TSR and NTA growth relative to that of the comparative index (see chart below).

Fig. 2: AUI TSR vs ASX 200 Accum. Index



Source: Bloomberg, OML

BKI Investment Company (BKI)

www.bkilimited.com.au

- BKI was listed on the ASX in December 2003 with an objective to provide investors with sound dividend yields and long-term capital growth.
- BKI invests in a diversified portfolio of Australian shares, trusts and interest-bearing securities, focusing on securities that are paying an increasing dividend stream.
- The total shareholder return for the year ending 31 October 2024 was 6.7%, with pre-tax NTA increasing 16.2%. The active return (TSR) was -18.0%.

Fig.4: BKI Snapshot

BKI Snapshot				Top Holdings			
Price (31 October 2024)	\$1.72			Commonwealth Bank.	8.2%		
Share price range (12 months)	\$1.67- \$1.82			BHP Group Limited	8.2%		
Shares on issue (Mn)	807.1			Macquarie Group Ltd	7.6%		
Market capitalisation (\$Mn)	\$1,388			National Aust. Bank	6.3%		
Pre-tax asset backing*	\$1.86			APA Group	4.5%		
Post-tax asset backing*	\$1.72			Wesfarmers Limited	4.3%		
Premium/(Discount) to pre-tax NTA	-7.5%			New Hope Corporation	4.2%		
Premium/(Discount) to post-tax NTA	-0.2%			Woodside Energy	3.5%		
Dividend yield	4.6%			Telstra Corporation.	3.4%		
Dividend per share (cents)	7.9			Harvey Norman	3.1%		
Franking	100%			Transurban Group	2.9%		
Management expense ratio	0.18%			ARB Corporation.	2.7%		

Total Shareholder Return	1 Year	3 Year	5 Year	NTA Performance	1 Year	3 Year	5 Year
BKI	6.7%	6.4%	5.1%	NTA growth	16.2%	8.3%	6.8%
Active return	-18.0%	-1.2%	-3.0%	Active return	-8.6%	0.7%	-1.3%

Source: IRESS, Bloomberg, OML, Company reports. Figures as at 31 October 2024. Active returns refers to the TSR and NTA growth relative to that of the comparative index (see chart below).

Fig.5: BKI TSR vs ASX 300 Accum. Index



Source: Bloomberg, OML

L1 Long Short Fund (LSF)

www.l1longshort.com

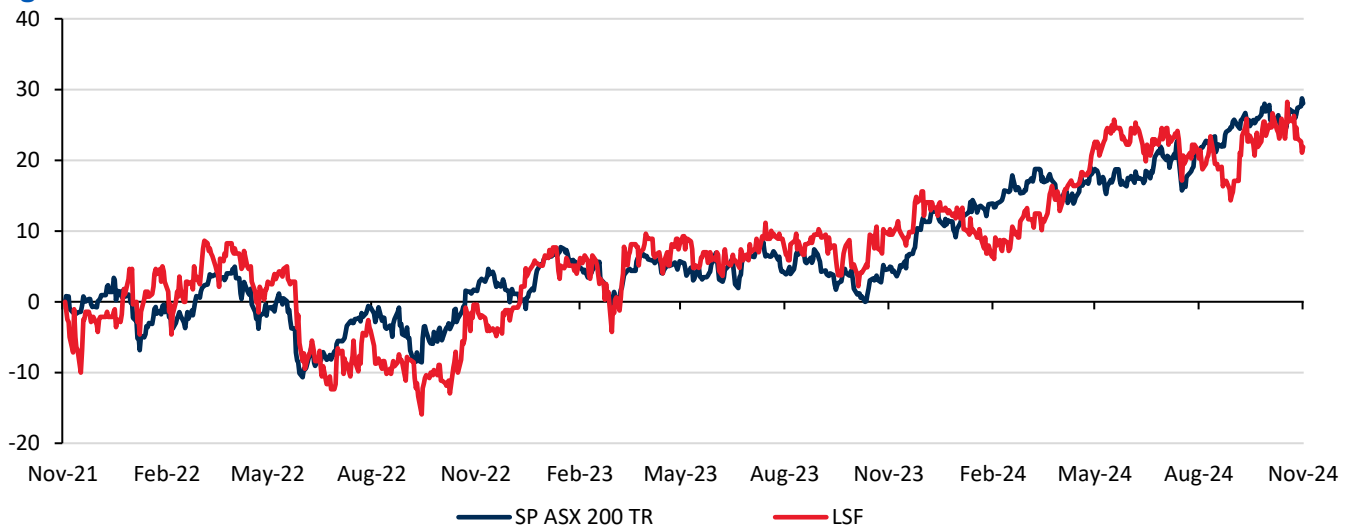
- LSF listed in April-18 following a \$1.3bn raising. LSF has dual investment objectives to 1) seek to deliver strong, positive, risk-adjusted returns over the long term (being a period of more than five years); and 2) preserve capital.
- LSF utilises a fundamental, bottom-up research process to seek and identify mispriced securities with the potential to provide attractive risk adjusted returns. The manager may take short positions in companies it considers to be overvalued, or of low quality and/or over-gearred.
- The total shareholder return for the year ending 31 October 2024 was 18.4%, with pre-tax NTA increasing 14.2%. The active return (TSR) was -6.4%.

Fig.6: LSF Snapshot

LSF Snapshot				Key contributors/detractors to portfolio performance			
Price (31 October 2024)			\$3.13	Contributors			
Share price range (12 months)			\$2.77- \$3.22	Arcadium Lithium			
Shares on issue (Mn)			625.5	Qantas			
Market capitalisation (\$Mn)			\$1,958	Detractors			
Pre-tax asset backing*			\$3.15	Flight Centre			
Post-tax asset backing*			\$3.05	Mineral Resources			
Premium/(Discount) to pre-tax NTA			-0.6%				
Premium/(Discount) to post-tax NTA			2.6%				
Dividend yield			3.8%				
Dividend per share (cents)			11.8				
Franking			100%				
Management expense ratio			1.44%				
				*Alphabetical			
Total Shareholder Return				NTA Performance			
	1 Year	3 Year	5 Year		1 Year	3 Year	5 Year
LSF	18.4%	7.5%	17.3%	NTA growth	14.2%	3.8%	14.5%
Active return	-6.4%	-0.5%	9.1%	Active return	-10.6%	-4.2%	6.4%

Source: IRESS, Bloomberg, OML, Company reports. Figures as at 31 October 2024. Active returns refers to the TSR and NTA growth relative to that of the comparative index (see chart below).

Fig.7: LSF TSR vs ASX200 Accum. Index



Source: Bloomberg, OML

AMCIL (AMH)

www.amcil.com.au

- AMCIL manages a concentrated investment portfolio comprising 30 to 40 stocks covering large and small companies in the Australian and New Zealand equity markets. Its investment approach is to construct a focused portfolio in which large and small companies can have an equally important impact on investment returns.
- By utilising an active, fundamental and bottom-up approach, the fund aims to provide shareholders with returns that exceed returns from the market (S&P/ASX 200 Index) over the medium to long term.
- The total shareholder return for the year ending 31 October 2024 was 31.1%, with pre-tax NTA increasing 32.7%. The active return (TSR) was 6.2%.

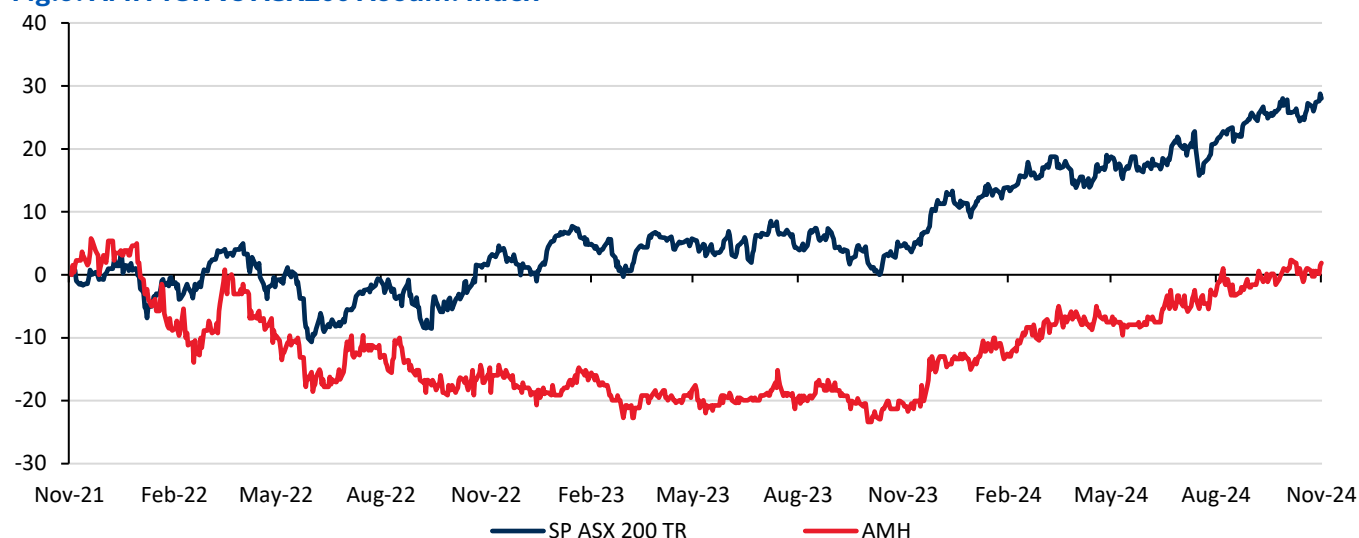
Fig.8: AMH Snapshot

AMH Snapshot		Top Holdings		%
Price (31 October 2024)	\$1.17	CSL Limited		8.5%
Share price range (12 months)	\$0.94- \$1.19	Macquarie Group Ltd		6.2%
Shares on issue (Mn)	317.6	Goodman Group		5.1%
Market capitalisation (\$Mn)	\$372	BHP Group Limited		4.8%
Pre-tax asset backing*	\$1.30	Wesfarmers Limited		4.4%
Post-tax asset backing*	\$1.15	Carsales.Com Ltd.		4.2%
Premium/(Discount) to pre-tax NTA	-10.0%	Macquarie Telecom Gp		4.1%
Premium/(Discount) to post-tax NTA	1.7%	Mainfreight		4.1%
Dividend yield	3.4%	Transurban Group		3.9%
Dividend per share (cents)	4.0	ARB Corporation.		3.5%
Franking	100%			
Management expense ratio	0.56%			

Total Shareholder Return	1 Year	3 Year	5 Year	NTA Performance	1 Year	3 Year	5 Year
AMH	31.1%	1.4%	8.7%	NTA growth	32.7%	3.6%	9.3%
Active return	6.2%	-6.6%	0.6%	Active return	7.9%	-4.4%	1.2%

Source: IRESS, Bloomberg, OML, Company reports. Figures as at 31 October 2024. Active returns refers to the TSR and NTA growth relative to that of the comparative index (see chart below).

Fig.9: AMH TSR vs ASX200 Accum. Index



Source: Bloomberg, OML

Spheria Emerging Companies (SEC)

www.spheria.com.au

- SEC is managed by Spheria Asset Management; a fundamental bottom-up investment manager specialising in small and microcap companies. SEC listed in December 2017 following a ~\$132m raise.
- SEC aims to grow shareholder wealth over the long-term by generating absolute returns in excess of the benchmark, at below market levels of risk.
- The total shareholder return for the year ending 31 October 2024 was 37.8%, with pre-tax NTA increasing 33.9%. The active return (TSR) was 11.2%.

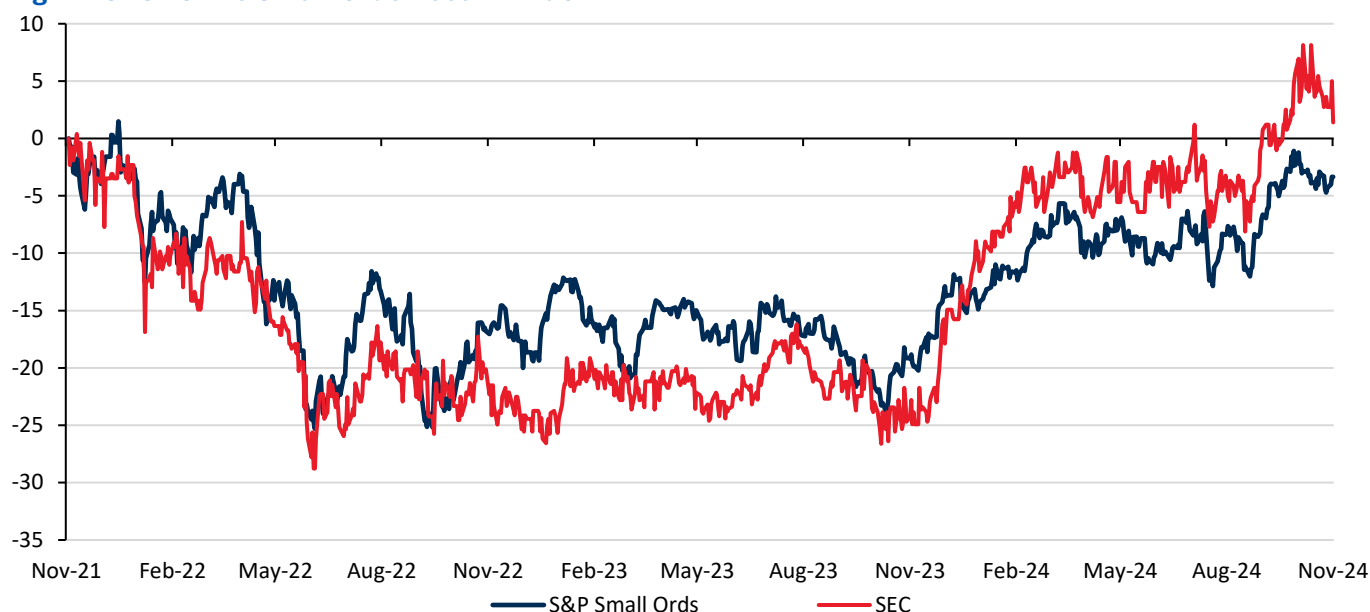
Fig.10: SEC Snapshot

SEC Snapshot		Top Holdings (August)		%
Price (31 October 2024)	\$2.33	Supply Network		5.5%
Share price range (12 months)	\$1.77- \$2.41	Fletcher Building		4.9%
Shares on issue (Mn)	59.8	Insignia Financial Ltd		4.4%
Market capitalisation (\$Mn)	\$139	IRESS Limited		4.2%
Pre-tax asset backing*	\$2.40	Healius		3.8%
Post-tax asset backing*	\$2.34	Bega Cheese Ltd		3.6%
Premium/(Discount) to pre-tax NTA	-2.7%	Universal Store		3.2%
Premium/(Discount) to post-tax NTA	-0.4%	Sims Limited		3.0%
Dividend yield	5.5%	Technology One		2.9%
Dividend per share (cents)	12.8	Deterra Royalties		2.7%
Franking	100%			
Management expense ratio	1.00%			

Total Shareholder Return	1 Year	3 Year	5 Year	NTA Performance	1 Year	3 Year	5 Year
SEC	37.8%	1.5%	11.9%	NTA growth	33.9%	0.5%	7.6%
Active return	11.2%	2.1%	7.3%	Active return	7.4%	1.1%	3.0%

Source: IRESS, Bloomberg, OML, Company reports. Figures as at 31 October 2024. Active returns refers to the TSR and NTA growth relative to that of the comparative index (see chart below).

Fig.11: SEC TSR vs Small Ords Accum. Index



Source: Bloomberg, OML

Regal Investment Fund (RF1)

www.regalfm.com

- The manager, established in 2004, is a specialist alternative investment manager, with a primary focus on long short investment strategies. RF1 was listed in Jun-19, following a \$282m raising.
- RF1 is constructed by the Manager through the selection and allocation of funds to a number of Regal strategies.
- The allocations to strategies as at 31 October 2024 was Emerging Companies (24%), Resources Royalties (17%), Small Companies (13%), Private Credit (16%), Market Neutral (10%), Global Alpha (9%), Global Long Short (7%), and Water (5%).
- The total shareholder return for the year ending 31 October 2024 was 48.1%, with pre-tax NTA increasing 27.0%.

Fig.13: RF1 Snapshot

RF1 Snapshot		Top Holdings		%
Price (31 October 2024)	\$3.65	Exposure by Strategy		
Share price range (12 months)	\$2.69- \$3.70	Emerging Companies		24%
Shares on issue (Mn)	186.3	Resources Royalties		17%
Market capitalisation (\$Mn)	\$680	Small Companies		13%
Pre-tax asset backing*	\$3.52	Private Credit		16%
Post-tax asset backing*	n.a	Market Neutral		10%
Premium/(Discount) to pre-tax NTA	3.7%	Global Alpha		9%
Premium/(Discount) to post-tax NTA	n.a	Global Long Short		7%
Dividend yield	6.1%	Water		5%
Dividend per share (cents)	22.1			
Franking	0%			
Management expense ratio	1.50%			

Total Shareholder Return	1 Year	3 Year	5 Year	NTA Performance	1 Year	3 Year	5 Year
RF1	48.1%	6.6%	20.0%	NTA growth	27.0%	5.5%	19.6%
Active return	23.4%	-1.0%	11.9%	Active return	2.2%	-2.1%	11.5%

Source: IRESS, Bloomberg, OML, Company reports. Figures as at 31 October 2024. Active returns refers to the TSR and NTA growth relative to that of the comparative index (see chart below).

Fig.14: RF1 TSR vs ASX300 Accum. Index



Source: Bloomberg, OML

PM Capital Global Opportunities Fund (PGF)

www.pmcapital.com.au

- Managed by PM Capital, PGF began trading on the ASX on 11 December 2013. PGF provides exposure to international equities with a portfolio size of generally 25-45 holdings.
- Investment exposures as at 31 October 2024 include Global Domestic Banking (Europe & USA, 37%), Energy (12%), Industrial Metals (17%), Industrials (13%), Gaming (10%), Housing Ireland & Spain (6%), and Alternative Managers (5%).
- The total shareholder return for the year ending 31 October 2024 was 45.3%, with pre-tax NTA increasing 35.4%. The active return (TSR) was 15.8%.

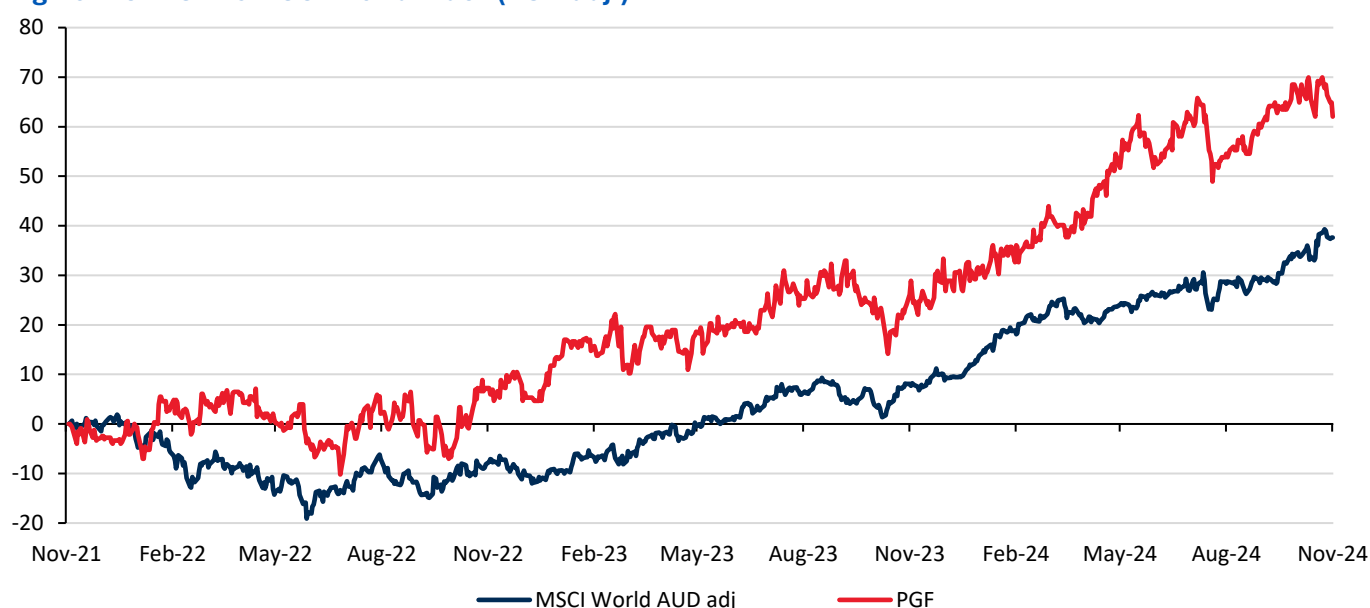
Fig. 14: PGF Snapshot

PGF Snapshot				Top Holdings			
Price (31 October 2024)	\$2.34			Allied Irish Bank			
Share price range (12 months)	\$1.78- \$2.36			Apollo Global Management			
Shares on issue (Mn)	478.9			Bank of America			
Market capitalisation (\$Mn)	\$1,121			CaixaBank			
Pre-tax asset backing*	\$2.16			ING Groep			
Post-tax asset backing*	\$1.92			Lloyds Banking Group			
Premium/(Discount) to pre-tax NTA	8.2%			Shell			
Premium/(Discount) to post-tax NTA	22.1%			Siemens AG			
Dividend yield	4.7%			Teck Resources			
Dividend per share (cents)	10.5			Wynn Resorts			
Franking	100%						
Management expense ratio	1.00%						

Total Shareholder Return	1 Year	3 Year	5 Year	NTA Performance	1 Year	3 Year	5 Year
PGF	45.3%	20.0%	21.5%	NTA growth	35.4%	14.3%	15.2%
Active return	15.8%	8.2%	7.9%	Active return	5.9%	2.5%	1.6%

Source: IRESS, Bloomberg, OML, Company reports. Figures as at 31 October 2024. Active returns refers to the TSR and NTA growth relative to that of the comparative index (see chart below).

Fig. 15: PGF TSR vs MSCI World Index (AUD adj.)



Source: Bloomberg, OML

MFF Capital Investments Limited (MFF)

<https://www.mffcapital.com.au/>

- MFF Capital Investments offers investors the opportunity to invest portfolio of a minimum of 20 stock exchange listed international and Australian companies. MFF aims for a portfolio focussed upon companies with attractive business characteristics (quality) at discounts to their intrinsic values (value). The portfolio is managed by led by Chris Mackay, co-founder of Magellan.
- In October 2024, MFF announced that it is expanding and strengthening its research team, focus and capabilities with the intended acquisition of Montaka Global Investments.
- The total shareholder return for the year ending 31 October 2024 was 50.6%, with pre-tax NTA increasing 40.7%. The active return (TSR) was 21.1%.

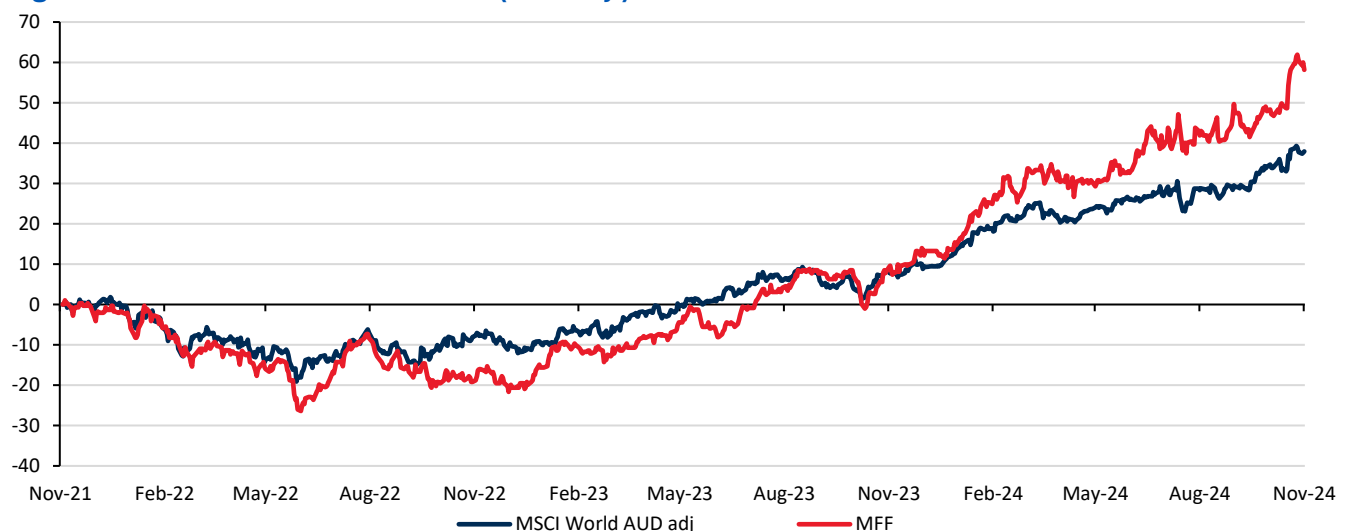
Fig.14: MFF Snapshot

MFF Snapshot				Top Holdings			
Price (31 October 2024)			\$3.96	Amazon			11.9%
Share price range (12 months)			\$2.94- \$4.28	MasterCard			10.6%
Shares on issue (Mn)			582.5	Visa			9.8%
Market capitalisation (\$Mn)			\$2,307	American Express			7.9%
Pre-tax asset backing*			\$4.55	Meta Platforms			7.9%
Post-tax asset backing*			\$3.77	Bank of America			7.7%
Premium/(Discount) to pre-tax NTA			-13.0%	Alphabet (A)			6.9%
Premium/(Discount) to post-tax NTA			5.0%	Home Depot			6.6%
Dividend yield			3.1%	Alphabet (C)			6.5%
Dividend per share (cents)			13.0	Microsoft			6.4%
Franking			100%	Flutter Entertainment			2.7%
Management expense ratio			0.55%	DBS Group			1.8%

Total Shareholder Return	1 Year	3 Year	5 Year	NTA Performance	1 Year	3 Year	5 Year
MFF	50.6%	15.2%	7.4%	NTA growth	40.7%	14.5%	10.6%
Active return	21.1%	3.4%	-6.3%	Active return	11.2%	2.7%	-3.0%

Source: IRESS, Bloomberg, OML, Company reports. Figures as at 31 October 2024. Active returns refers to the TSR and NTA growth relative to that of the comparative index (see chart below).

Fig.15: MFF TSR vs MSCI World Index (AUD adj.)

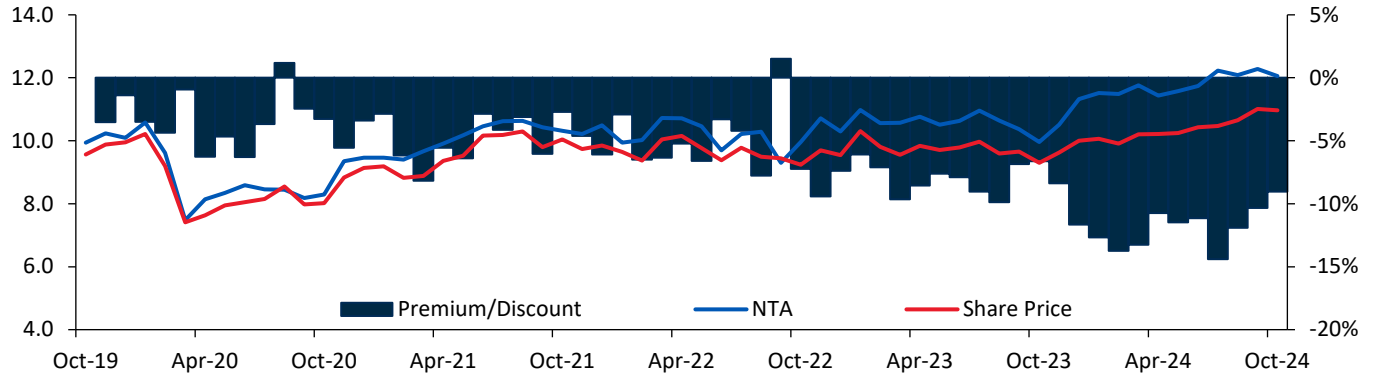


Source: Bloomberg, OML



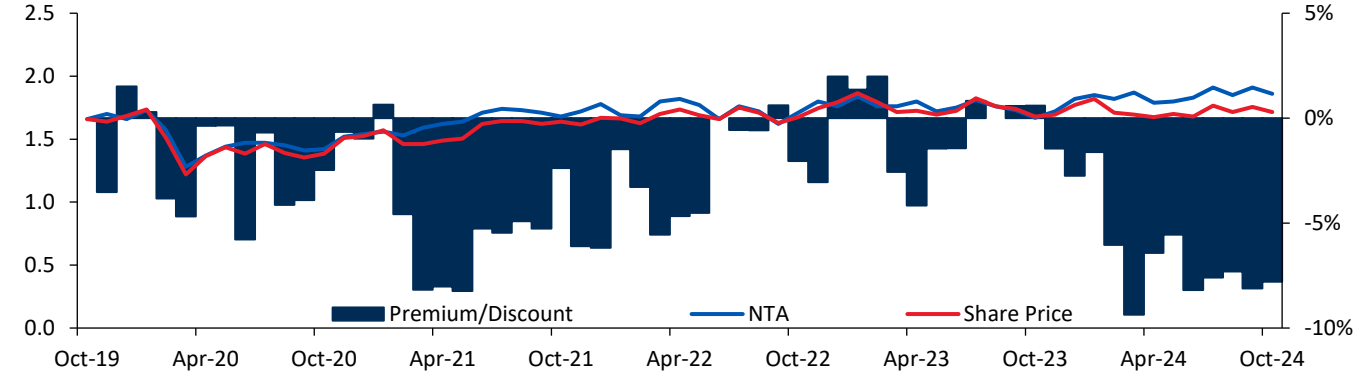
Appendix – Historical Premium/Discounts for Preferred LICs

Fig.16: Australian United Investment Company (AUI)



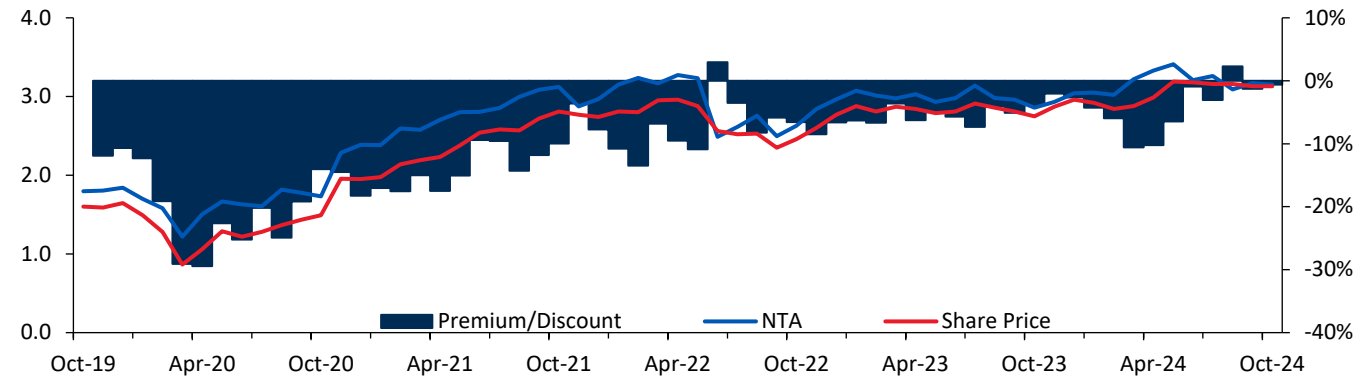
Source: Bloomberg, IRESS, OML.

Fig.17: BKI Investment Company (BKI)



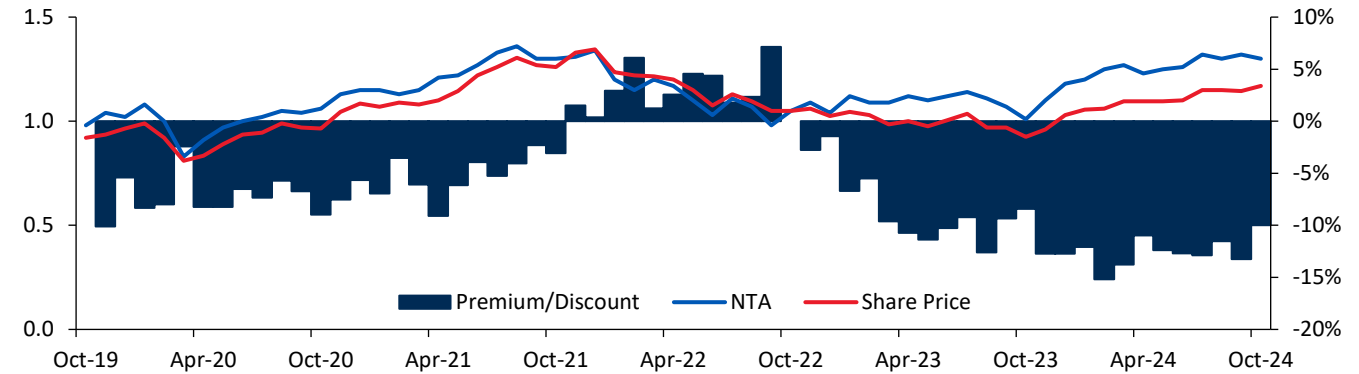
Source: Bloomberg, IRESS, OML.

Fig.18: L1 Long Short Fund (LSF)



Source: Bloomberg, IRESS, OML.

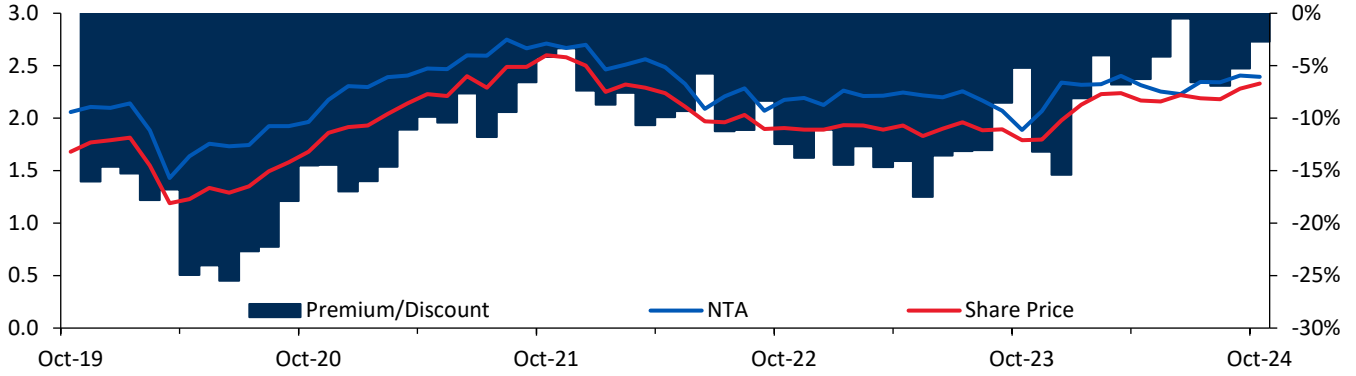
Fig.19: AMCIL (AMH)



Source: Bloomberg, IRESS, OML.

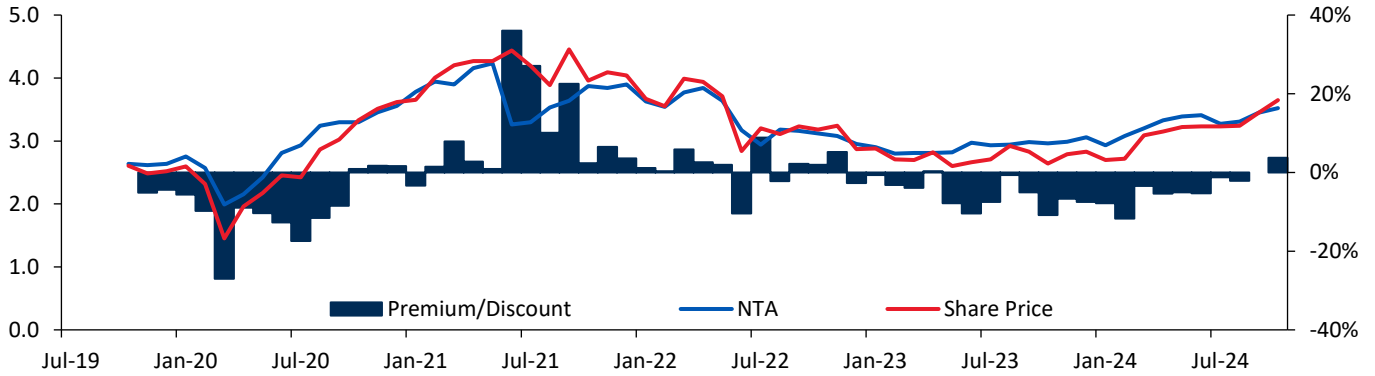


Fig.20: Spheria Emerging Companies Limited (SEC)



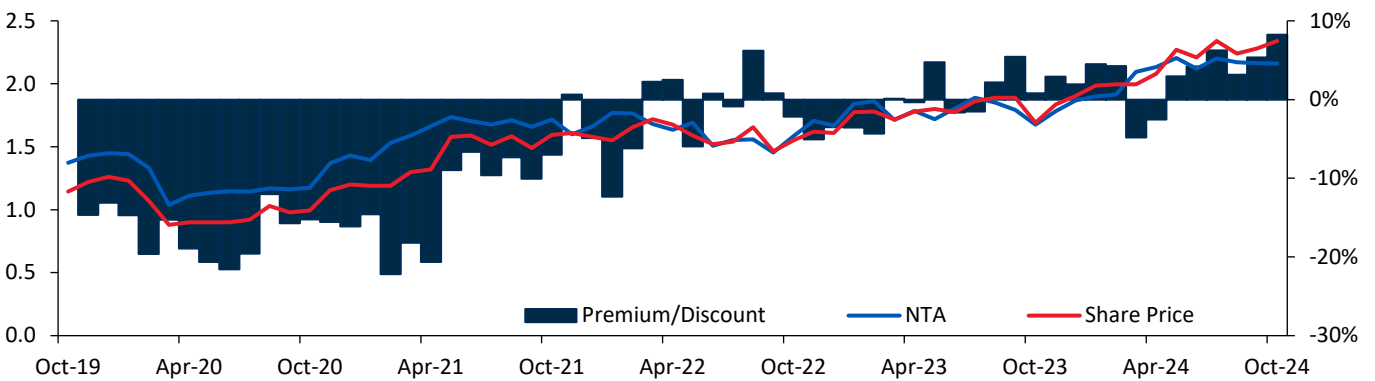
Source: Bloomberg, IRESS, OML.

Fig.21: Regal Investment Fund (RF1)



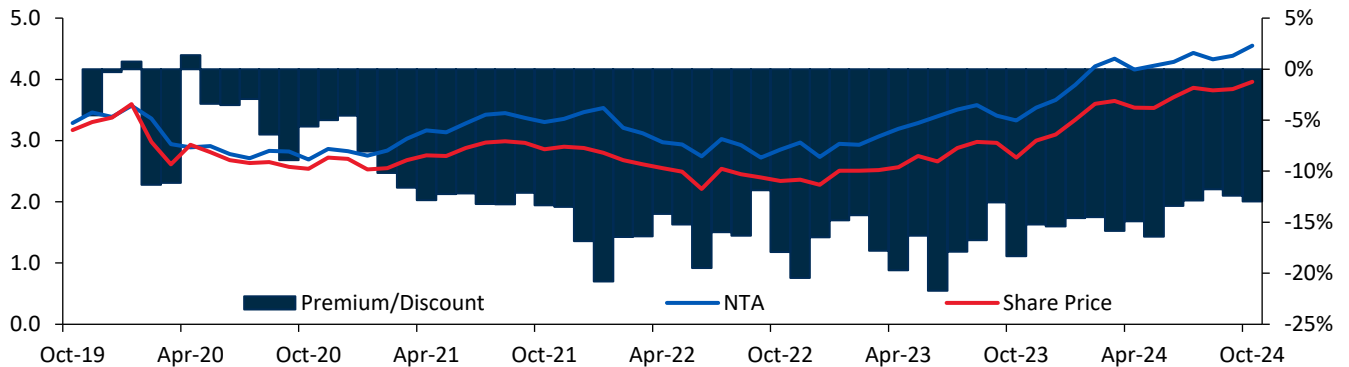
Source: Bloomberg, IRESS, OML.

Fig.22: PM Capital Global Fund (PGF)



Source: Bloomberg, IRESS, OML.

Fig.23: MFF Capital Investments (MFF)

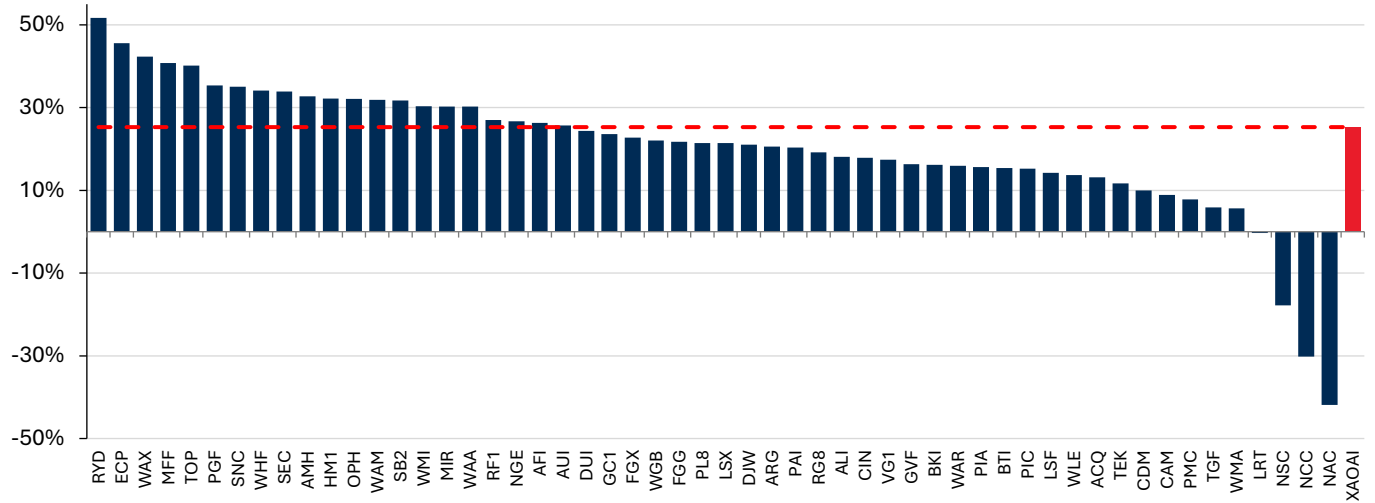


Source: Bloomberg, IRESS, OML.



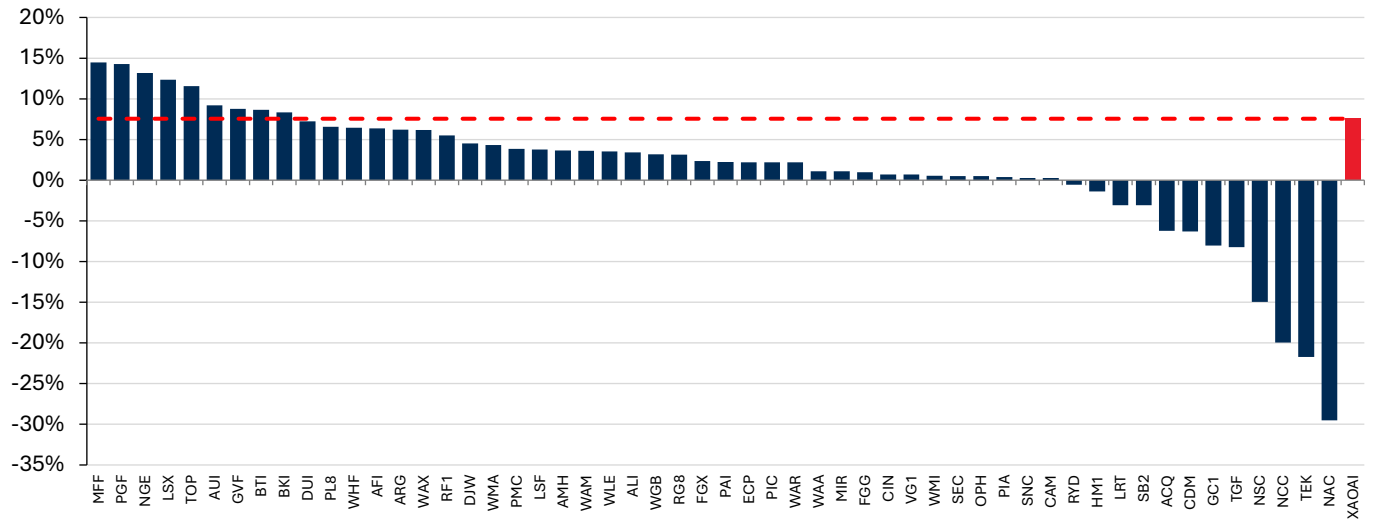
1, 3 and 5-year NTA & total shareholder return growth

Fig.24: NTA compound annual growth rate – % return over 12 months



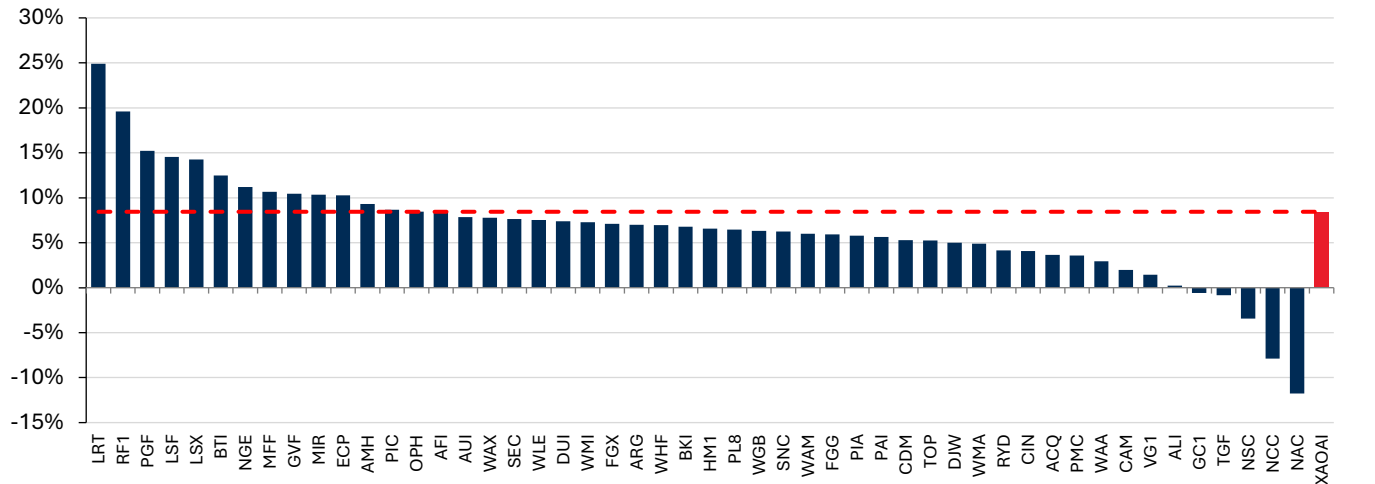
Source: Bloomberg, IRESS, OML. Figures as at 31 October 2024.

Fig.25: NTA compound annual growth rate – % return over 3 years



Source: Bloomberg, IRESS, OML. Figures as at 31 October 2024.

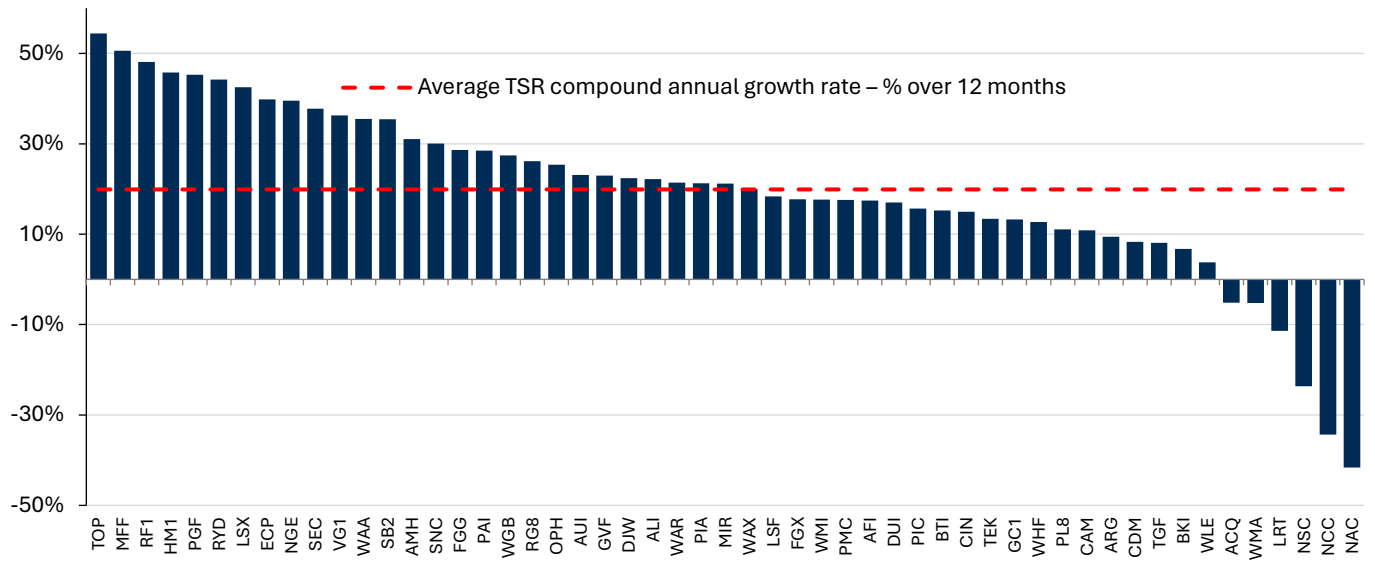
Fig.26: NTA compound annual growth rate – % return over 5 years



Source: Bloomberg, IRESS, OML. Figures as at 31 October 2024.

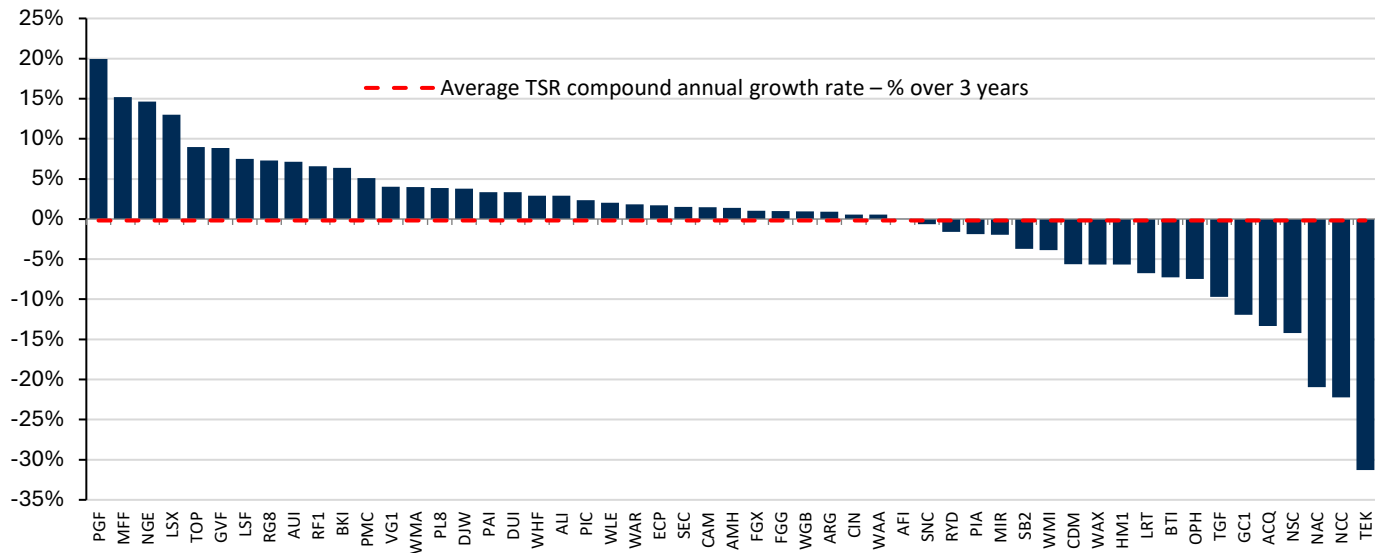


Fig.27: TSR compound annual growth rate – % over 12 months



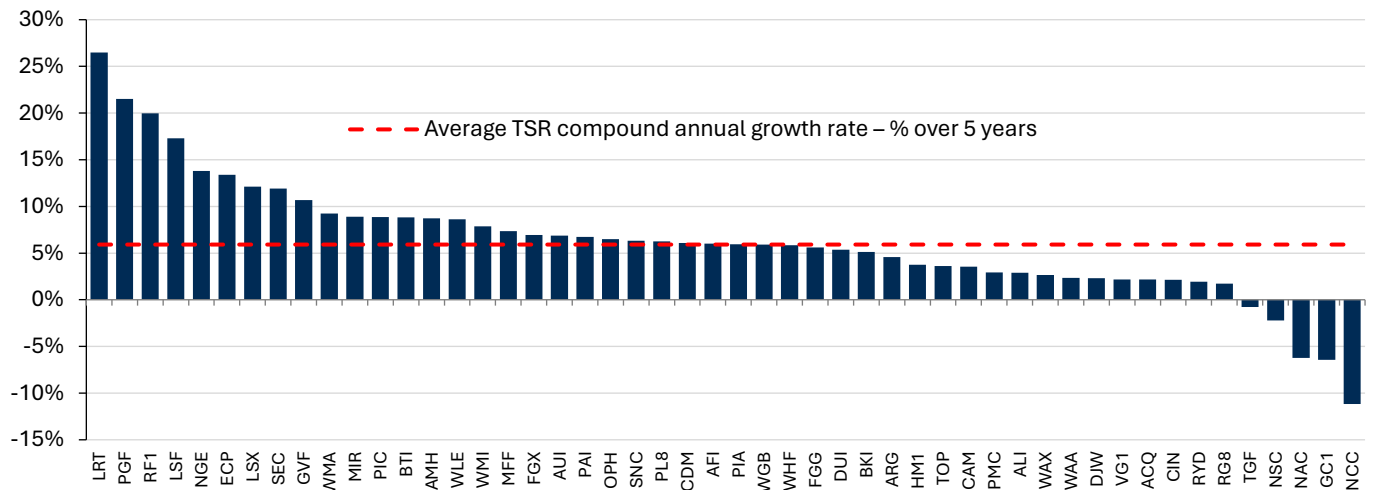
Source: Bloomberg, IRESS, OML. Figures as at 31 October 2024.

Fig.28: TSR compound annual growth rate – % over 3 years



Source: Bloomberg, IRESS, OML. Figures as at 31 October 2024.

Fig.29: TSR compound annual growth rate – % over 5 years

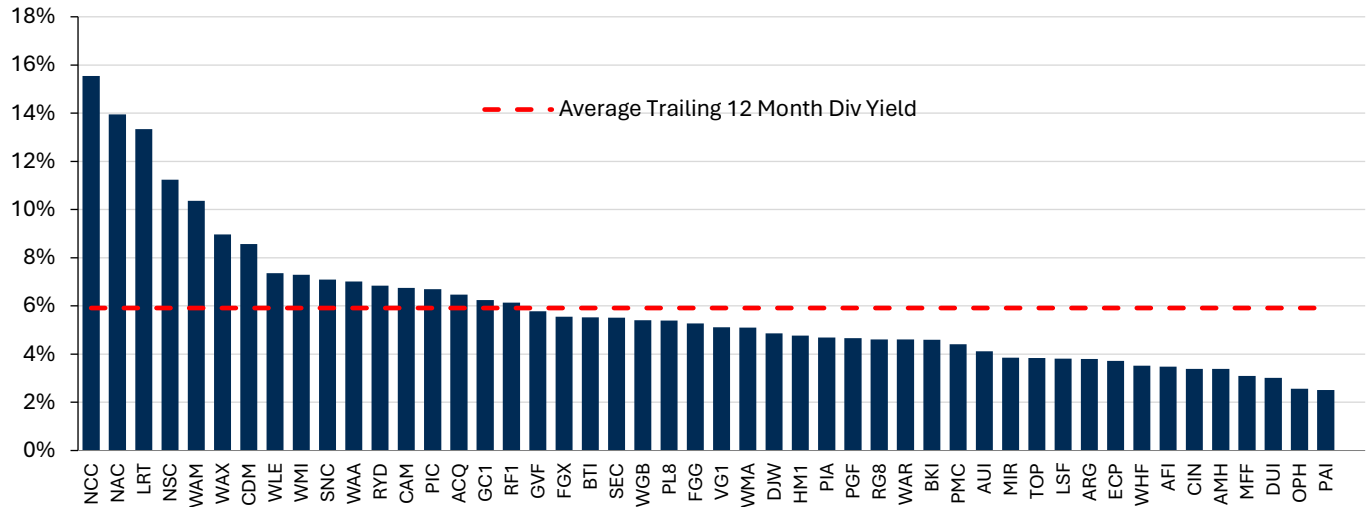


Source: Bloomberg, IRESS, OML. Figures as at 31 October 2024.



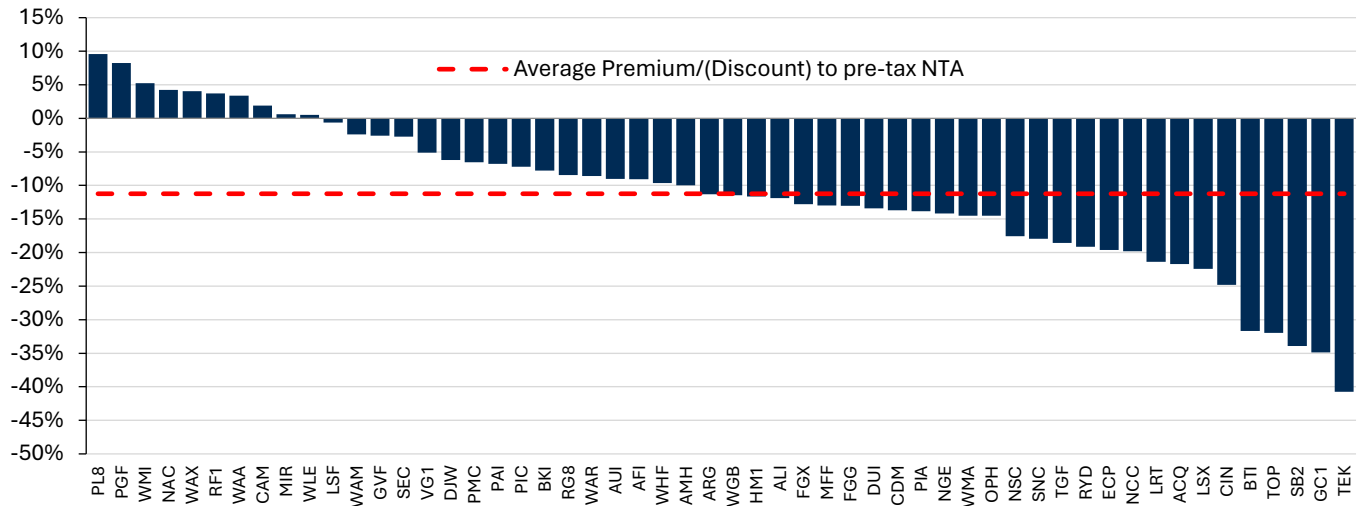
Dividend yield, pre & post tax discount/premium to NTA

Fig.30: Trailing 12-month dividend yield and average



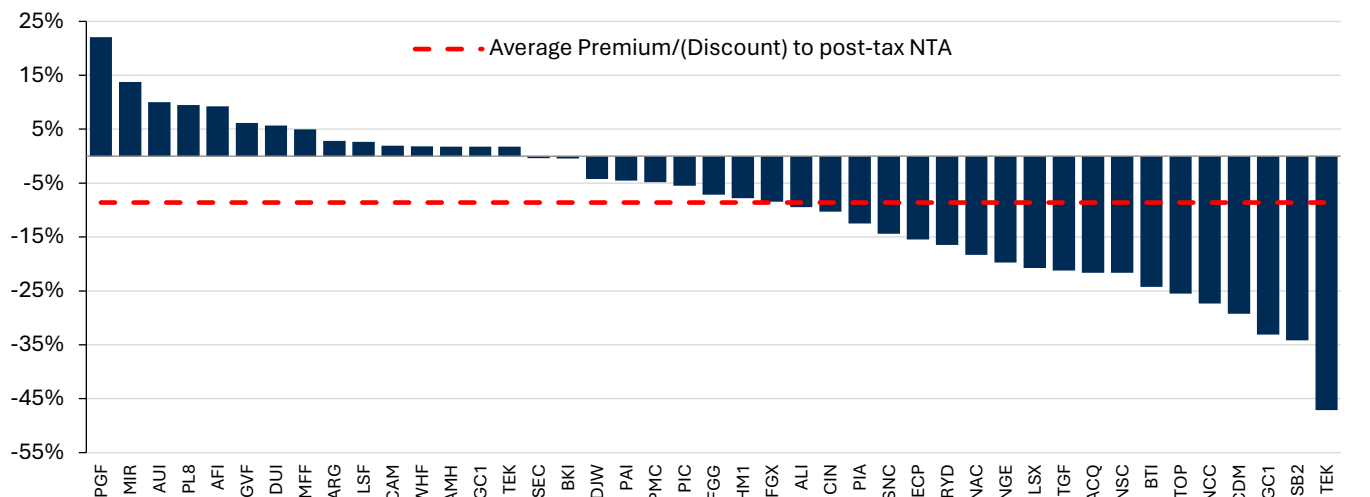
Source: Bloomberg, IRESS, OML. Figures as at 31 October 2024. LICs with no yield excluded.

Fig.31: Premium/(Discount) to pre-tax NTA



Source: Bloomberg, IRESS, OML. Figures as at 31 October 2024.

Fig.32: Premium/(Discount) to post-tax NTA

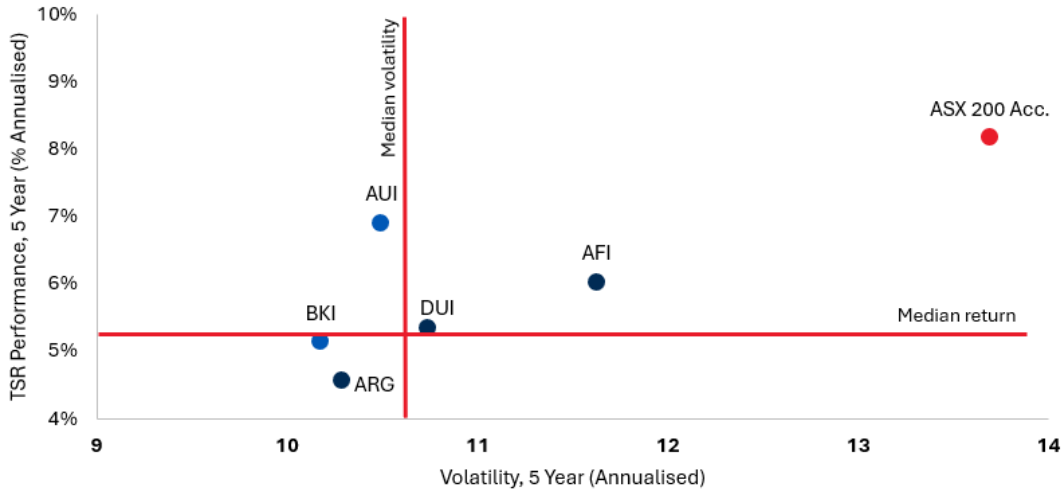


Source: Bloomberg, IRESS, OML. Figures as at 31 October 2024.



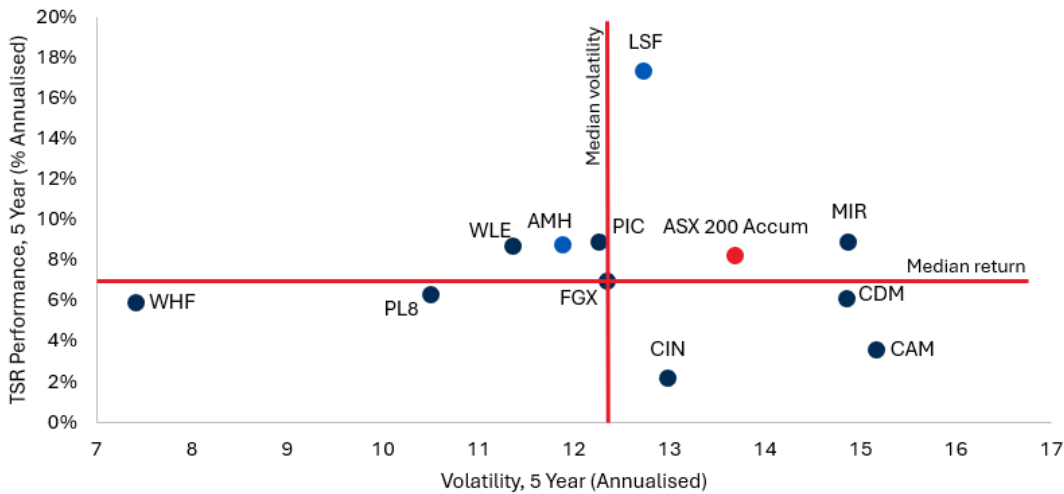
Return Volatility

Fig.33: Traditional LICs



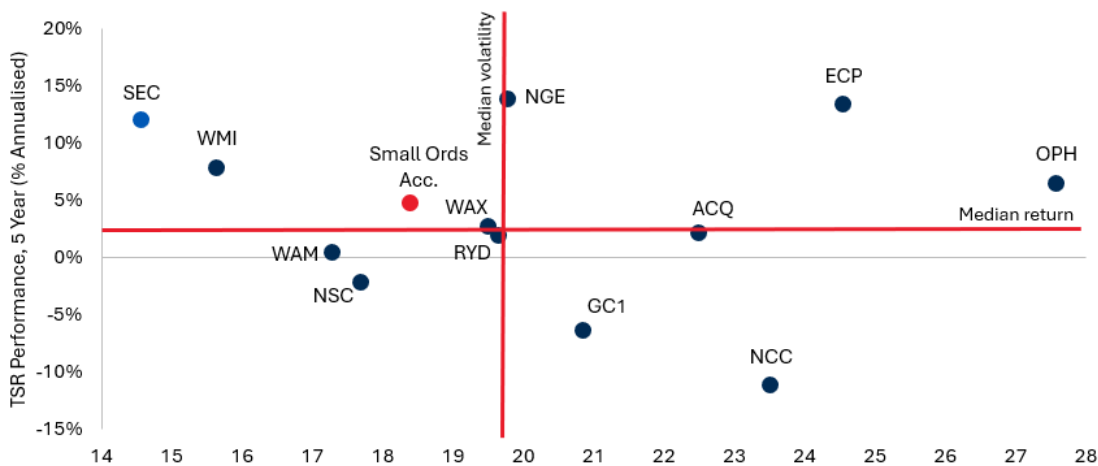
Source: Bloomberg, IRESS, OML.

Fig.34: Large Capitalisation LICs



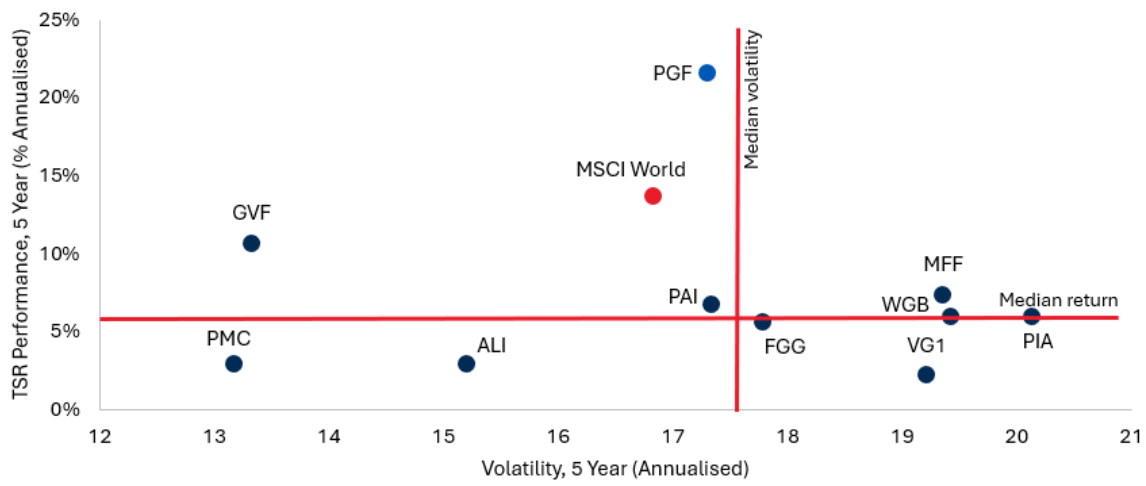
Source: Bloomberg, IRESS, OML.

Fig.35: Small Capitalisation LICs



Source: Bloomberg, IRESS, OML.

Fig.36: International LICs



Source: Bloomberg, IRESS, OML.

LIC Basics

What is a LIC?

- A LIC has characteristics of managed funds and stock exchange-listed companies.
- A LIC is a company that invests in other companies, with the purpose of giving its shareholders exposure to a variety of shares via its investment portfolio.
- LICs may also invest in cash or fixed income instruments, although in many cases this forms only a relatively small proportion of their investment portfolio.
- Income from LICs usually takes the form of semi-annual dividend payments that are linked to the profitability of the portfolio. Capital gains (losses) can arise where the investor sells the shares in the LIC for more (less) than they originally bought them for.

Benefits of investing in LICs

Diversification

- Investment in just one LIC potentially gives an investor exposure to a number of companies in a range of industries.
- This diversification can reduce the volatility of returns across the portfolio.
- A LIC can be a cost-effective method of achieving diversification.

LICs are managed by investment professionals

- Each LIC is managed by full-time investment professionals whose goal it is to optimise returns on the investment portfolio for shareholders within strictly enforced risk parameters.
- In this respect, LICs are passive investments. Once the shares in the LIC have been purchased, the investor leaves investment decisions to the LIC manager.
- Some LICs have operated for more than 50 years while others, although only recently listed, are operated and managed by investment firms that have built strong reputations over many years.

Transparent investment philosophy

- LICs are typically transparent about their investment philosophy and process. Investors can choose the relevant LIC based on their own investment goals and risk preferences.
- Some LICs focus on specific geographic areas (such as Australia or overseas), may invest in a range of industries or focus on just one (such as resources), or are geared towards providing investors with annual income streams or longer-term capital gains (or a combination of both).
- In this document, we briefly describe each of the 64 selected LICs, their main investments and recent performance.

Ease of investment

- Investing in a LIC is done in the same manner as any other company on the ASX, by placing an order with your adviser to buy shares in it.
- Exiting the investment is just as straightforward: the investor sells the shares on-market during trading hours through their adviser.
- Most LICs are 'liquid', meaning there are enough willing buyers and sellers on the ASX, to allow the investor to enter or exit the investment at a time they choose.

Costs involved in investing in a LIC

Entry costs

- Investing in the ASX via a LIC can be cost-effective relative to other methods of investing in a 'portfolio' of investments.
- The initial cost comes in the form of brokerage paid to acquire the shares, which can deliver an efficient method of diversification.
- The entry costs to LIC investments are generally lower than retail managed funds, which utilise a "front-end load" charge at the date of purchase.



Ongoing costs

- LIC managers can charge two types of fees: management and performance fees.
- LICs use management fees to cover the costs incurred in running the portfolio. These fees are taken out of the profits of the LIC, which are a function of the performance of the underlying investment portfolio (including dividends paid and capital gains/losses on shares that are sold). Managers are paid regardless of the profitability of the investment portfolio.
- These fees typically range from 0.0%-2.0% of assets under management per year. This can be lower than the average fees charged for retail managed funds. The effect of this cost-saving on a longer-term investment, where returns compound over many years, can be material. One reason for this lower cost is that LICs do not incur back-office or distribution costs, reducing their cost of operation. The fees (calculated as a “management expense ratio” or MER) of our selected LICs are shown in Table 2.
- Unlike management fees, performance fees are paid only if the LIC’s investment portfolio outperforms a predetermined benchmark. The fee is charged on the size of this outperformance. Not all LICs charge performance fees.
- These fees provide an incentive for the LIC manager to optimise returns for shareholders. Note performance fees in some instances can still be paid when a portfolio incurs a loss over an investment period if it still outperforms its relevant benchmark.
- Performance fees for our selected LICs are shown in Table 2 on page 7. The benchmark index is the S&P/ASX All Ordinaries Accumulation Index unless otherwise stated below.

Exit costs

- Brokerage is payable when selling shares in a LIC. Retail managed funds on the other hand, can generally be exited at no charge.
- Exiting a LIC investment can have tax consequences based on the capital gain or loss over the investment period.

What income do investors receive from a LIC?

- Annual investor income from a “buy-and-hold” investment strategy in a LIC takes the form of dividends, just like other share investments.
- However, because LICs utilise a company structure, payment of dividends is at the discretion of the LIC manager. In other words, just because the investment portfolio of the LIC has made a profit in a given year, it does not mean that all, or even any, of that profit will be paid to shareholders in that year. Where a LIC chooses not to pay a dividend, the income is retained and invested by the LIC and forms part of the LIC’s underlying asset backing. This is different to retail managed funds, which are required to pay out the income to unitholders in the particular tax year that it is earned. Generally, LICs will pay out a high proportion of earnings as dividends.
- A number of our selected LICs invest in blue chip stocks and pay out a high proportion of earnings as a dividend. Accordingly, they can have attractive dividend yields (as shown in Figure 1).

Taxation issues

- LIC returns are generally taxed at the company tax rate of 30%. Accordingly, when dividends are paid to shareholders of the LIC franking credits are attached. These can be a tax benefit for shareholders, as they receive a “credit” for the company tax already paid on the LIC income when the shareholder’s ordinary income is assessed.
- Capital gains are managed by the LIC manager. Where the dividend paid to a shareholder of a LIC contains capital gains, it will be treated as a capital gain, not ordinary income, in the hands of the shareholder.
- This tax treatment contrasts with that of unlisted retail managed funds, where investors incur an annual tax liability on interest and capital gains that the fund earns each year.

LIC Discounts and Premiums

- The price at which investors buy or sell LICs, as with stocks is ultimately determined by supply and demand in the market. As a result, the price of a listed investment company can trade above or below its net tangible asset (NTA) value. That is, trade at a premium or discount, respectively.
- LICs may trade at a discount if:
 - The underlying fund has a poor performance track record.
 - The LIC has yet to pay dividends, has recently reduced its dividend or the market anticipates it has limited ability to pay future dividends.
 - The LIC has a limited track record, rapport with investors or has limited marketing and/or distribution capability.
 - The LIC has issued options which could substantially dilute the NTA of other unit holders if exercised.
 - The LIC has less liquidity.
 - LICs may trade at a discount to pre-tax NTAs if the LIC has a significant tax liability.
- LICs may also trade at a premium if:
 - The underlying portfolio has a strong performance track record.
 - The fund has a history of maintaining or increasing dividends. Many LIC investors have historically preferred vehicles paying stable fully franked dividends.
 - If an LIC has a substantial franking credit balance or tax asset.
- Many LICs have exhibited a tendency for discounts and premiums to mean revert and trade around a certain level. This tendency has provided an opportunity for investors to profit from mean reversion for LICs trading at a discount. However, this reversion can take time and rely on certain catalysts. We also note that a discount can deepen before it narrows.
- Some listed investment companies which trade at a premium may continue to trade at premium for the foreseeable future, or trade at an even larger premium.

LICs versus managed funds

- LICs are listed on the stock exchange, so entry and exit costs are limited to brokerage. This means that diversification may be achieved at a relatively lower cost. LICs also offer a tax-effective structure, whereby dividends are typically fully franked and when LIC capital gains are paid out as dividends, investors may be entitled to an income tax reduction for the proportion of the dividend attributable to the capital gain. Investors in managed funds may incur a tax liability on interest and capital gains.
- The fee structures of LICs can be favourable in comparison with managed funds. Our selected traditional LICs have management expense ratios ranging from 0.0% to 2.5%, whereas managed funds often charge more than 1.0%.

LICs versus exchange traded funds (ETFs)

- LICs and ETFs have low management fees and efficient tax structures compared with managed funds. However, ETFs have an open-ended structure, where units on offer can increase or decrease based on supply and demand. This mechanism allows ETFs to trade at or close to their net asset value.
- ETFs are generally passive investment products and hence do not aim to outperform the market in the same way many of the LICs do. There are an increasing number of Exchange Traded Managed Funds though that offer active management and avoid variation from NTA.
- ETFs are required to distribute any surplus income to security holders, whereas LICs can conserve surplus income and take advantage of market opportunities as they see fit. This added flexibility is beneficial to the shareholder.



Ord Minnett Offices

Adelaide Level 5 100 Pirie Street Adelaide SA 5000 Tel: (08) 8203 2500	Canberra 101 Northbourne Avenue Canberra ACT 2600 Tel: (02) 6206 1700	Hobart Ground Floor 85 Macquarie Street Hobart TAS 7000 Tel: (03) 6161 9300	Melbourne Level 22 35 Collins Street Melbourne VIC 3000 Tel: (03) 9608 4111	Head Office Sydney Level 18, Grosvenor Place 225 George Street Sydney NSW 2000 Tel: (02) 8216 6300 www.ords.com.au
Brisbane Level 34 71 Eagle Street Brisbane QLD 4000 Tel: (07) 3214 5555	Geelong Office 3, Suite 4 200 Malop Street Geelong VIC 3220 Tel: (03) 4210 0200	Mackay 45 Gordon Street Mackay QLD 4740 Tel: (07) 4969 4888	Newcastle 426 King Street Newcastle NSW 2300 Tel: (02) 4910 2400	International Hong Kong 1801 Ruttonjee House 11 Duddell Street Central, Hong Kong Tel: +852 2912 8980 www.ords.com.hk
Buderim (Sunshine Coast) 1/99 Burnett Street Buderim QLD 4556 Tel: (07) 5430 4444	Gold Coast Level 7 50 Appel Street Surfers Paradise QLD 4217 Tel: (07) 5557 3333	Mildura 128 Lime Avenue Mildura VIC 3500 Tel: (03) 9608 4111	Perth Level 27 108 St Georges Terrace Perth WA 6000 Tel: (08) 6179 6400	

Guide to Ord Minnett Recommendations

Our recommendations are based on the total return of a stock – nominal dividend yield plus capital appreciation – and have a 12-month time horizon.

SPECULATIVE BUY	We expect the stock's total return (nominal yield plus capital appreciation) to exceed 20% over 12 months. The investment may have a strong capital appreciation but also has high degree of risk and there is a significant risk of capital loss.
BUY	The stock's total return (nominal dividend yield plus capital appreciation) is expected to exceed 15% over the next 12 months.
ACCUMULATE	We expect a total return of between 5% and 15%. Investors should consider adding to holdings or taking a position in the stock on share price weakness.
HOLD	We expect the stock to return between 0% and 5%, and believe the stock is fairly priced.
LIGHTEN	We expect the stock's return to be between 0% and negative 15%. Investors should consider decreasing their holdings.
SELL	We expect the total return to lose 15% or more.
RISK ASSESSMENT	Classified as Lower, Medium or Higher, the risk assessment denotes the relative assessment of an individual stock's risk based on an appraisal of its disclosed financial information, historical volatility of its share price, nature of its operations and other relevant quantitative and qualitative criteria. Risk is assessed by comparison with other Australian stocks, not across other asset classes such as Cash or Fixed Interest.

Disclosure: Ord Minnett acted as Joint Lead Manager in a capital raising for PM Capital Global Opportunities Fund Limited (PGF) in July 2024 and Regal Investment Fund (RF1) in November 2024 and received fees for acting in these capacities. Ord Minnett acted as a Joint Lead Arranger and Joint Lead Manager in the IPO of Whitefield Income Limited (WHI) in November 2024. Ord Minnett may do business with and receive commission and/or fees from companies that are the subject of this report. Hugh Glasson holds units in LSF and BTI.

Disclosure: Ord Minnett is the trading brand of Ord Minnett Limited ABN 86 002 733 048, holder of AFS Licence Number 237121 and is an ASX Group Participant, a Participant of Cboe Australia Pty Ltd and a wholly owned subsidiary of Ord Minnett Holdings Pty Limited ABN 32 062 323 728. Ord Minnett Limited and/or its associated entities, directors and/or its employees may have a material interest in, and may earn brokerage from, any securities referred to in this document. This document is not available for distribution outside Australia, New Zealand and Hong Kong and may not be passed on to any third party or person without the prior written consent of Ord Minnett Limited. Further, Ord Minnett and/or its affiliated companies may have acted as manager or co-manager of a public offering of any such securities in the past three years. Ord Minnett and/or its affiliated companies may provide or may have provided corporate finance to the companies referred to in the report.

Ord Minnett and associated persons (including persons from whom information in this report is sourced) may do business or seek to do business with companies covered in its research reports. As a result, investors should be aware that the firm or other such persons may have a conflict of interest that could affect the objectivity of this report. Investors should consider this report as only a single factor in making their investment decision.

This document is current as at the date of the issue but may be superseded by future publications. You can confirm the currency of this document by checking Ord Minnett's internet site.

Disclaimer: Ord Minnett Limited believes that the information contained in this document has been obtained from sources that are accurate, but has not checked or verified this information. Except to the extent that liability cannot be excluded, Ord Minnett Limited and its associated entities accept no liability for any loss or damage caused by any error in, or omission from, this document. This document is intended to provide general securities advice only, and has been prepared without taking account of your objectives, financial situation or needs, and therefore before acting on advice contained in this document, you should consider its appropriateness having regard to your objectives, financial situation and needs. If any advice in this document relates to the acquisition or possible acquisition of a particular financial product, you should obtain a copy of and consider the Product Disclosure Statement for that product before making any decision. Investments can go up and down. Past performance is not necessarily indicative of future performance.

Analyst Certification: The analyst certifies that: (1) all of the views expressed in this research accurately reflect their personal views about any and all of the subject securities or issuers; (2) no part of their compensation was, is, or will be directly or indirectly related to the specific recommendations or views expressed herein.

Ord Minnett Hong Kong: This document is issued in Hong Kong by Ord Minnett Hong Kong Limited, CR Number 1792608, which is licensed by the Securities and Futures Commission (CE number BAI183) for Dealing in Securities (Type 1 Regulated Activity) and Advising on Securities (Type 4 Regulated Activity) and Asset Management (Type 9 Regulated Activity) in Hong Kong. Ord Minnett Hong Kong Limited believes that the information contained in this document has been obtained from sources that are accurate, but has not checked or verified this information. Except to the extent that liability cannot be excluded, Ord Minnett Hong Kong Limited and its associated entities accept no liability for any loss or damage caused by any error in, or omission from, this document. This document is provided for information purposes only and does not constitute an offer to sell (or solicitation of an offer to purchase) the securities mentioned or to participate in any particular trading strategy. The investments described have not been, and will not be, authorized by the Hong Kong Securities and Futures Commission.

Note: Through various investment entities, Bruce Mathieson beneficially holds a major shareholding in the Ord Minnett group as well as substantial shareholdings in Endeavour Group and Star Entertainment.

For information regarding Ord Minnett Research's coverage criteria, methodology and spread of ratings, please visit <http://www.ords.com.au/methodology/>

For information regarding any potential conflicts of interest and analyst holdings, please visit <http://www.ords.com.au/methodology/>

The analyst has certified that they were not in receipt of inside information when preparing this report, whether or not it contains company recommendations. Any reports in this publication have been authorised for distribution by Simon Kent-Jones, Head of Private Wealth Research at Ord Minnett.

© Copyright Ord Minnett (2024). All rights reserved. No part of this publication may be reproduced or redistributed in any manner without the prior written permission of Ord Minnett.